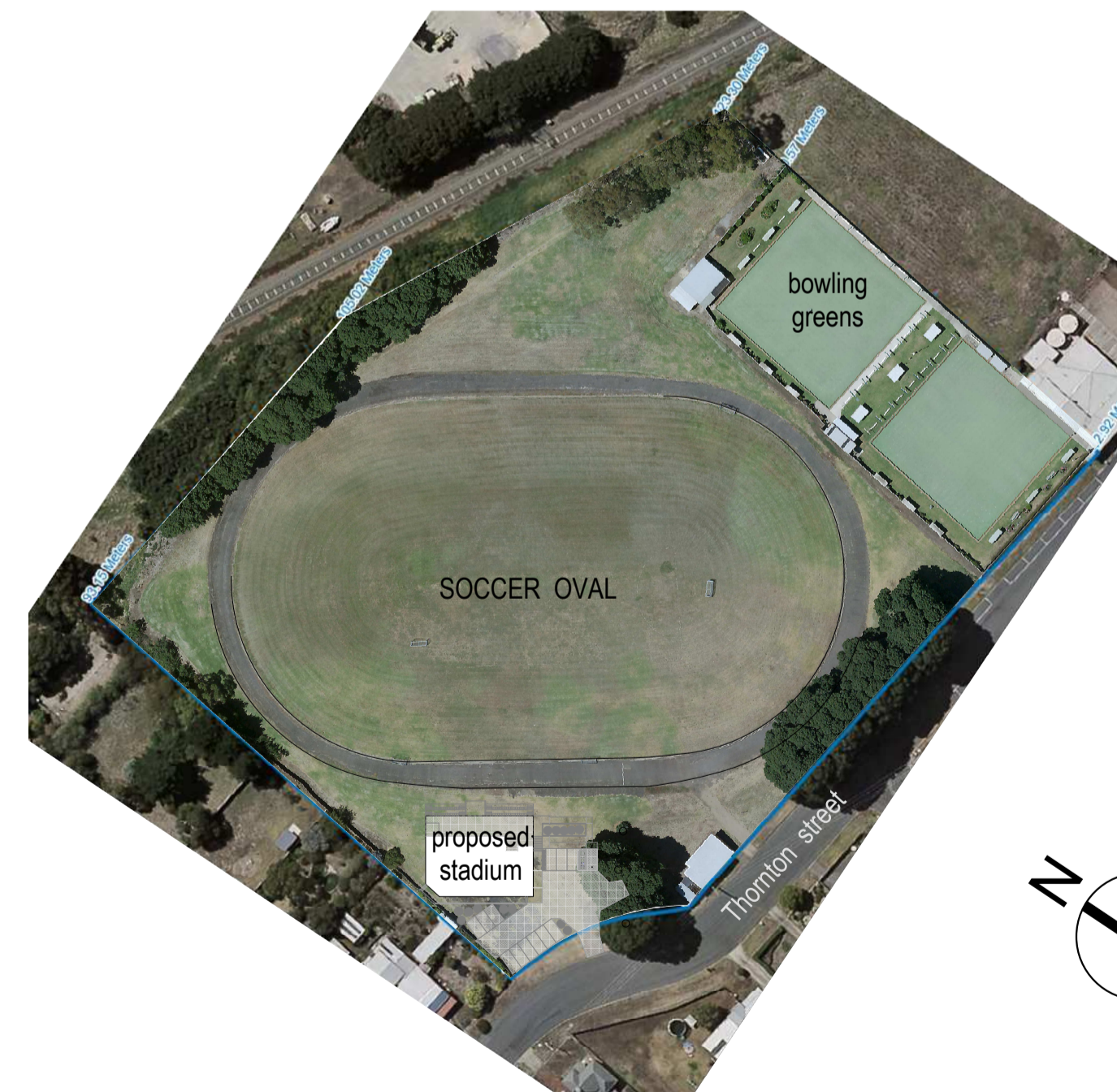


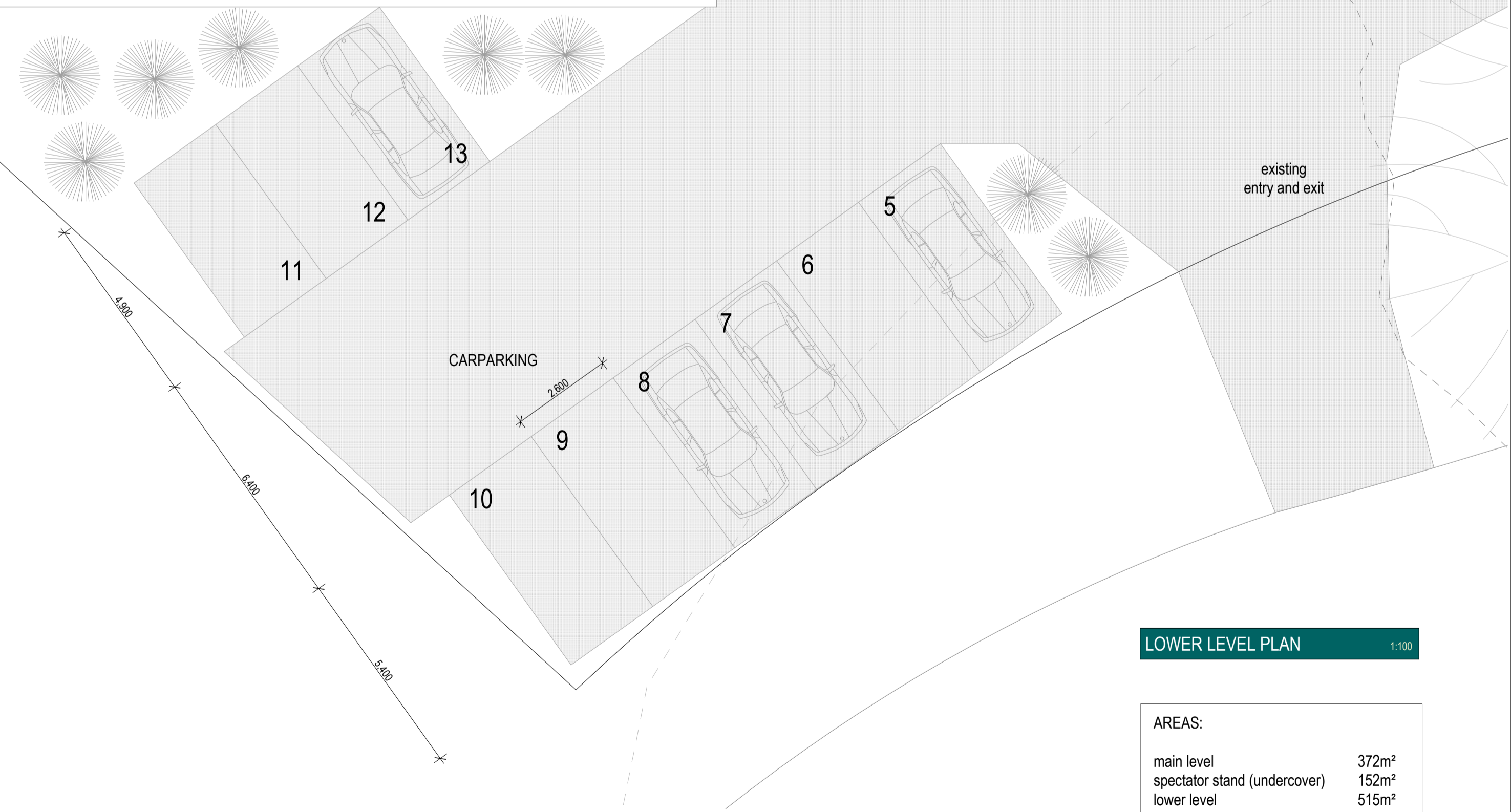
MAIN FLOOR PLAN 1:100



SITE PLAN 1:500



SITE PLAN 1:1500

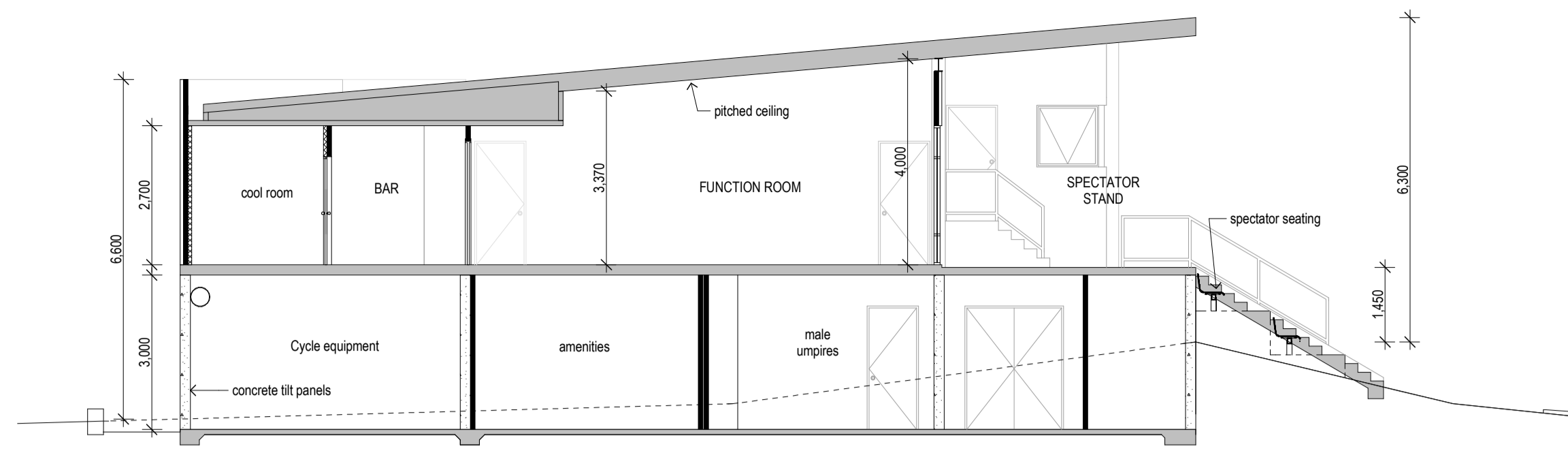


LOWER LEVEL PLAN 1:100

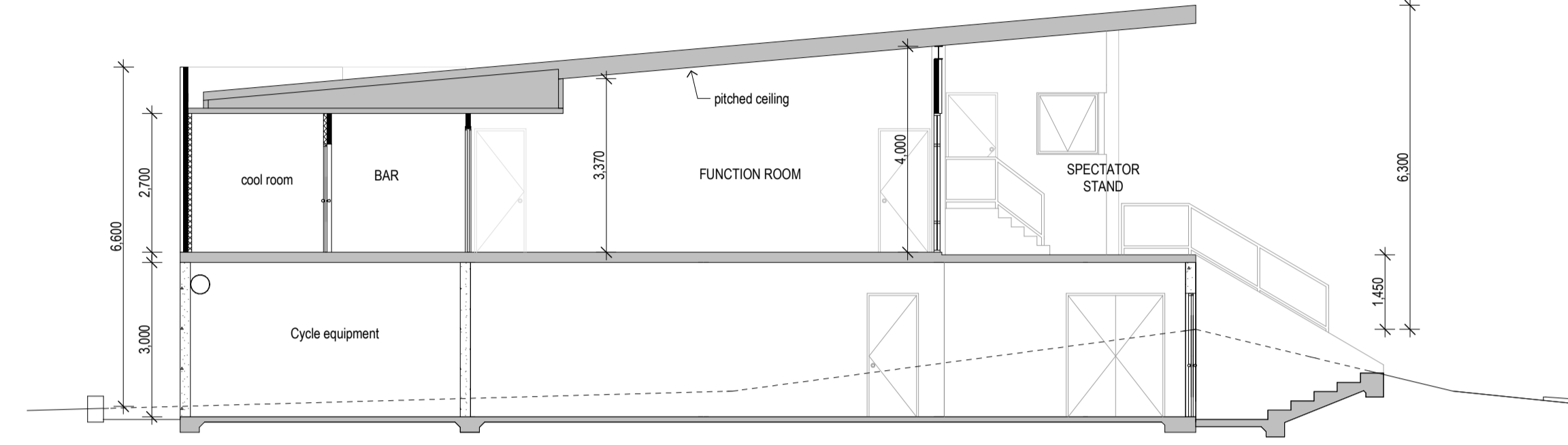
AREAS:

| | |
|------------------------------|-------------------|
| main level | 372m ² |
| spectator stand (undercover) | 152m ² |
| lower level | 515m ² |

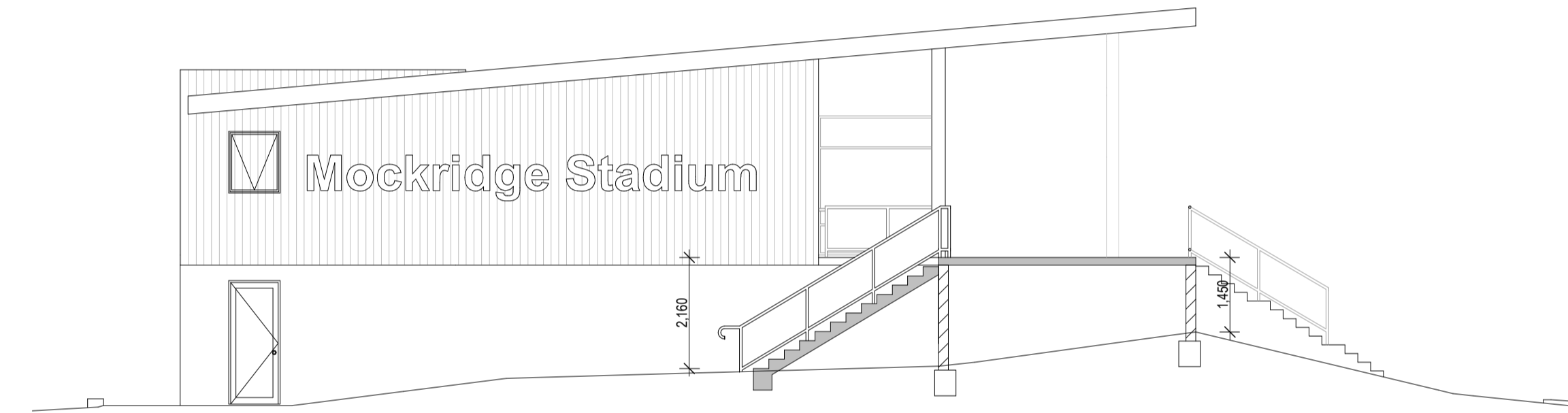
| | |
|-------------|--------------------|
| Rev Number: | Drawing Title: |
| A | SCHEMATIC DRAWINGS |
| | |
| | |
| | |



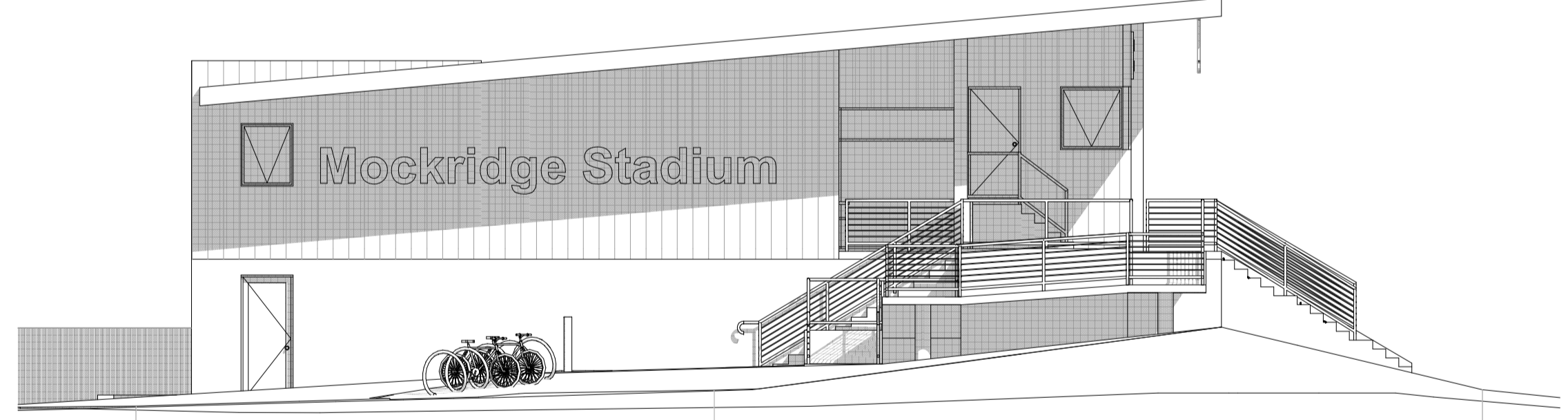
SECTION 1 1:100



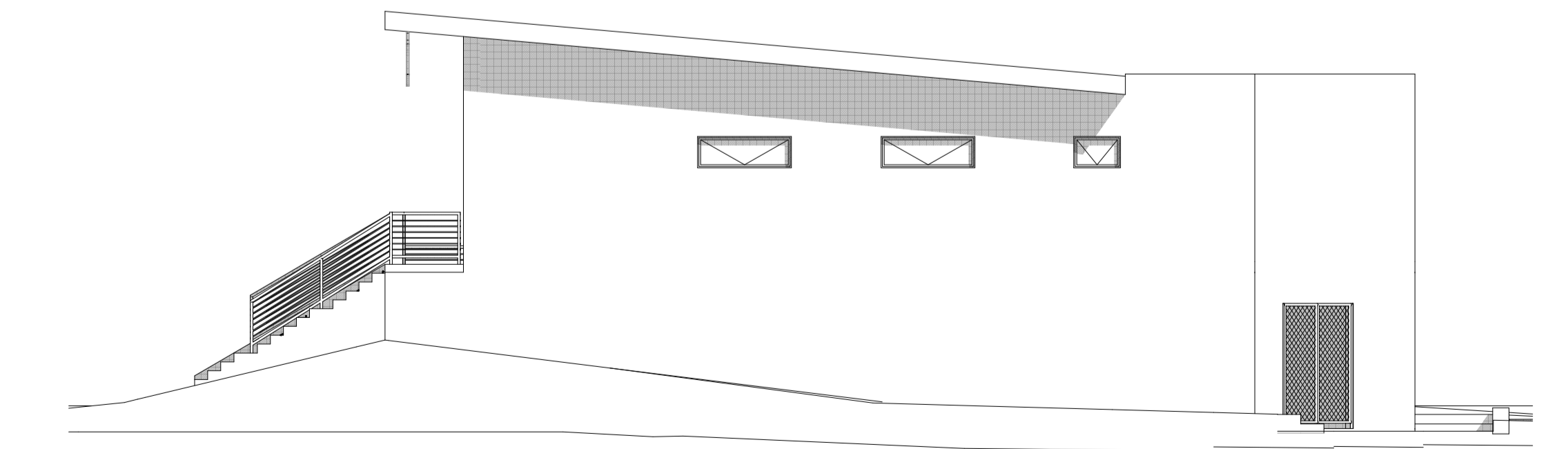
SECTION 2 1:100



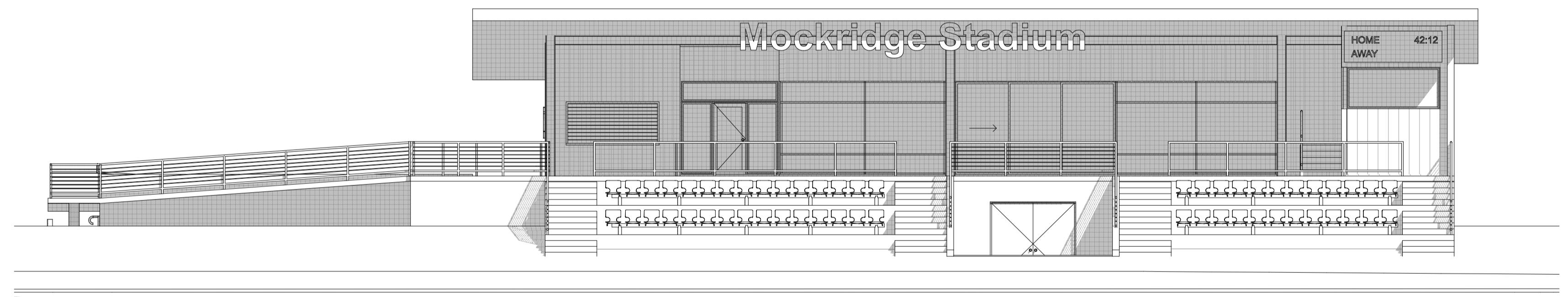
SECTION 3 1:100



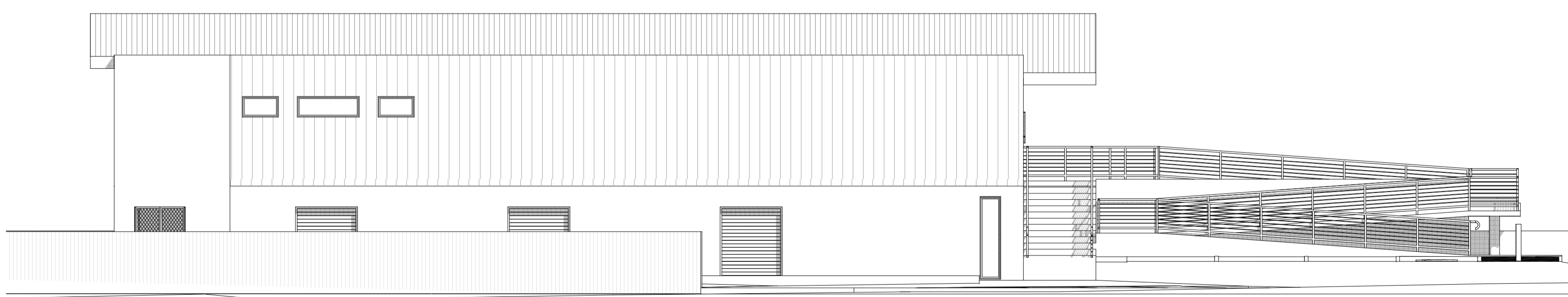
EAST elevation 1:100



WEST elevation 1:100



NORTH elevation 1:100



SOUTH elevation 1:100

| Rev Number | Drawing Title |
|------------|--------------------|
| A | SCHEMATIC DRAWINGS |
| | |
| | |
| | |
| | |