



PORT CAMPBELL CAR PARKING SURVEY

Project Report



efficient safe reliable    

ESR Transport Planning Pty Ltd 1/34A Doveton Street North, Ballarat VIC 3350

P: 0427 044 324 | E: drewm@esrtp.com.au | www.esrtp.com.au

&



Traffic Engineering Service Victoria



DOCUMENT CONTROL

Date: 18/05/20
Filename: 200518-PCCPS rpt
Our Ref: K0150
Author: Drew Matthews

CONTACT

ESR Transport Planning Pty Ltd ABN 86 128 037 429
1/34A Doveton Street North, Ballarat VIC 3350
P: 0427 044 324
E: drewm@esrtp.com.au
www.esrtp.com.au

PREPARED FOR



DISCLAIMER

© ESR Transport Planning Pty Ltd 2020.

This document has been prepared in good faith on the basis of information available at the time. Although care has been taken to ensure the accuracy of its contents, we make no guarantees. Neither ESR Transport Planning Pty Ltd nor its consultants or staff will be liable for any loss, damage, cost or expense incurred or arising from any person or organisation using or relying on the information in this document.

Contents

1	Introduction.....	4
1.1	Overview.....	4
1.2	Study Area.....	4
1.3	Car Parking Supply.....	5
1.4	Surveys Conducted.....	6
1.5	Relevant Matters / Assumptions.....	7
2	Survey Results.....	8
2.1	Seasonality.....	8
2.2	Full Results.....	8
2.3	Parking Demands.....	9
2.4	Parking Duration.....	16
2.5	Questionnaire Responses.....	17
2.6	Surveyors Observations.....	19
3	Recommendations.....	20
3.1	Supply and Demand.....	20
3.2	Future Parking Demands.....	20
3.3	Options to Increase Parking Supply.....	20
3.4	90 Degree On-Street Parking.....	25
3.5	Parking Management.....	25
	Appendix A Parking Demand Data	
	Appendix B Parking Duration Data	

1 Introduction

1.1 Overview

ESR Transport Planning, together with Traffic Engineering Services Victoria (TESV), have been engaged by Corangamite Shire Council to complete the Port Campbell Car Parking Survey study.

The study involved data collection regarding car parking conditions in the Port Campbell town centre during the 2019/20 summer season. The study purpose was to collect parking survey data, present findings and set out recommendations for future parking management.

1.2 Study Area

Car parking surveys were conducted within the study area shown in Figure 1.1. This report summarises data for all parking as well as a central sub-area defined as the Central Area, encompassing the commercial and foreshore precincts.

Figure 1.1 Study Area

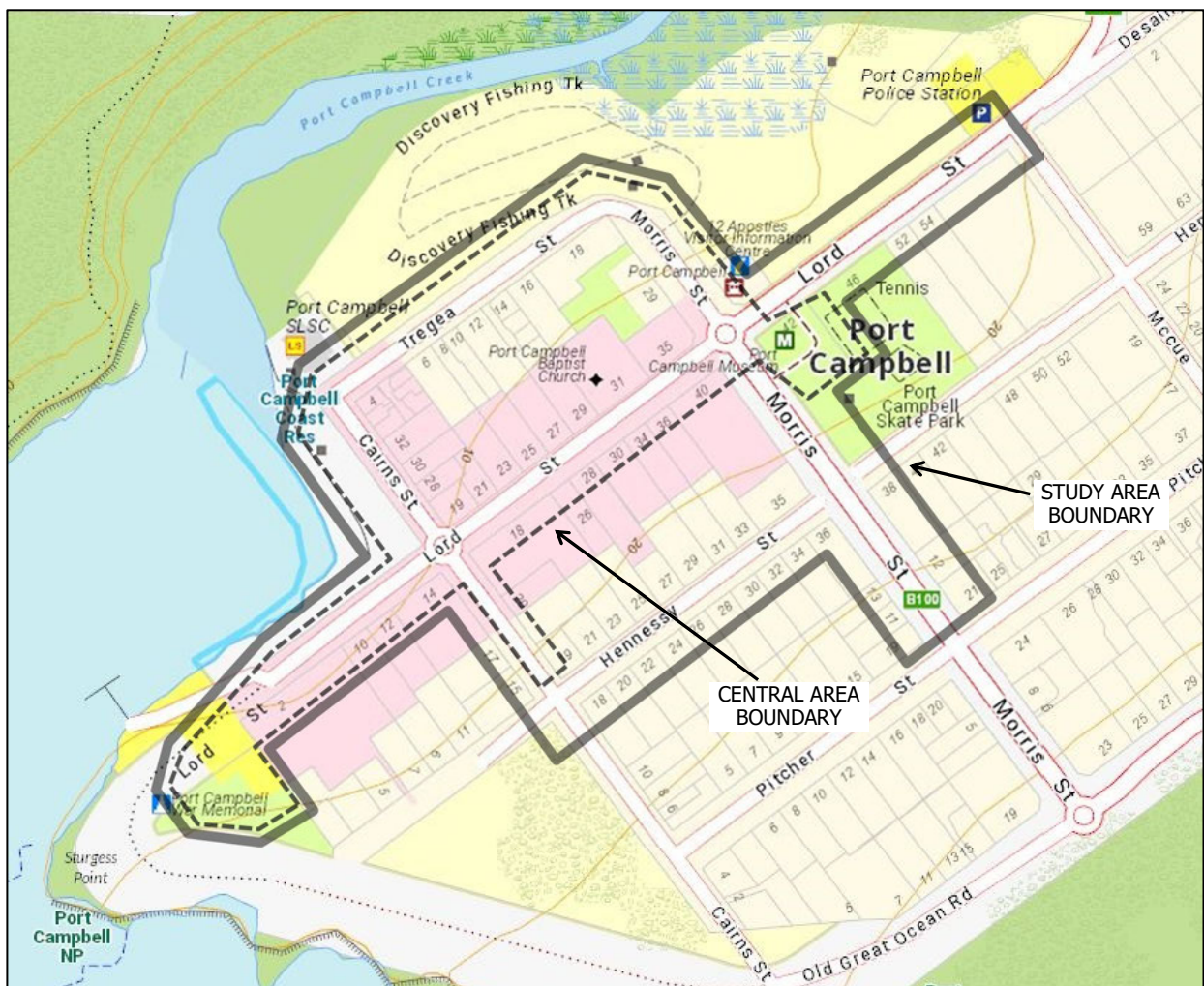


Image Source: Vic Emergency

1.3 Car Parking Supply

An inventory was conducted identifying the number of spaces and any restrictions applicable for all publicly available car parking within the study area.

The area includes 3 off-street carparks as follows: (i) at the southwest end of Lord Street, (ii) accessed from Morris Street (opposite the Visitor Information Centre), (iii) at the recreation reserve (corner of Lord and Morris Streets).

A total of 414 spaces were identified, of which 304 were within the Central Area. The vast majority (~90%) of parking is unrestricted. The exceptions are a ¼ hour space, disabled spaces, bus zones and other zones with specific vehicle restrictions (e.g. boat trailer parking).

Figure 1.2 shows identifiers used for each parking section and Table 1.1 sets out the parking inventory.

Figure 1.2 Survey Area Identifiers



Table 1.1 Inventory of Parking Supply

ID	Location	Segment	Side	Restrictions	Supply
1a	off-street carpark - end of Lord St			-	14
1b				P boat trailers only (long bays)	12
1c				P boat trailers only 3am-11am, professional boat operators excepted (long bays)	8
2a	Lord St (foreshore)	Cairns St - end	NW	P disabled (90 degree)	2
2b				(90 degree)	28
2c			SE	-	13
3a	Lord St (town centre)	Morris St - Cairns St	NW	P disabled (angle)	1
3b				1/4P 9am-5pm Mon-Fri (angle)	1
3c				- (angle)	25
3d			SE	-	16
4a	Lord St (GOR)	Morris St - McCue St	NW	Bus Zone (bus bays)	3
4b				-	18
4c			SE	-	23
5	off-street carpark - recreation reserve			-	11
6a	Morris St (GOR)	Lord St - Pitcher St	NE	-	23
6b			SW	- (angle)	8
6c				-	22
7a	Morris St (VIS)	Lord St - Tregea St	NE	P disabled	1
7b				- (angle)	4
7c			SW	-	5
8a	off-street carpark - Morris St			P disabled	2
8b				-	32
9a	Tregea St	Morris St - Cairns St	NW	- (angle)	39
9b				-	2
9c				Bus Zone (P 5min) (bus bays)	1
9d			SE	-	18
10a	Cairns St (foreshore)	Lord St - Tregea St	NE	P trucks & buses prohibited	10
10b			SW	P disabled (90 degree)	2
10c				- (90 degree)	29
11a	Cairns St	Lord St - Hennessy St	NE	-	5
11b			SW	Bus Zone (bus bays)	2
12a	Hennessy St	Morris St - Cairns St	NW	-	17
12b			SE	-	17
Total					414
Central Area Total					304

1.4 Surveys Conducted

TESV were responsible for data collection activities. Surveys were conducted on 21 separate days between 11 December 2019 and 20 February 2020. Three (3) data collection methods were deployed as follows.

1. Parking Demand Surveys - A record of the number of vehicles parked by locality at half hour intervals, with long vehicles counted separately to other vehicles¹. The majority of survey days encompassed the time period of 9:30am - 5:00pm whilst 4 survey days also included early evening with a time period of 9:30am - 9:00pm.

2. Duration of Stay Surveys - Similar to parking occupancy surveys but identified each vehicle in order to calculate each vehicles duration of stay. Duration of stay surveys were conducted on 5 separate days.

¹ Long vehicles counted all survey days except for 5 days of duration of stay surveys.

3. Questionnaire Surveys - Questionnaire surveys were conducted to provide some further insight into trip purpose, method of travel and parking duration. Persons questioned were those within the study area and included a mix of visitors, locals and workers.

Surveys were conducted on a mix of weekdays and weekend days. The survey schedule is shown in Table 1.2.

Table 1.2 Survey Schedule

	Mon	Tue	Wed	Thu	Fri	Sat	Sun
Dec	2	3	4	5	6	7	8
	9	10	11	12	13	14	15
	16	17	18	19	20 end school term	21	22
	23	24	25 Christmas Day	26 Boxing Day	27	28	29
Jan	30	31 New Year's Eve	1 New Year's Day	2	3	4	5
	6	7	8	9	10	11	12
	13	14	15	16	17	18	19
	20	21	22	23	24	25 Chinese New Year	26 Australia Day
	27 Australia Day Public Holiday	28	29 start school term	30	31	1	2
Feb	3	4	5	6	7	8	9
	10	11	12	13	14	15	16
	17	18	19	20	21	22	23
	24	25	26	27	28	29	1

Parking Occupancy (8hr)

Parking Occupancy (12.5hr)

Duration of Stay

1.5 Relevant Matters / Assumptions

- Many visitors to Port Campbell are overseas tourists and tourist numbers to Port Campbell during the 2019/20 summer may have been impacted by the Coronavirus. In late December 2019 a cluster of cases in Wuhan, China was reported and on 1st February 2020 the Australian Government restricted entry to Australia for those who had recently been to mainland China. The closure of Australian borders to all non-residents and social distancing rules were implemented in March 2020. Given the timing of the Coronavirus outbreak and travel bans, it is likely that much of the parking surveys during December and January are not significantly impacted.

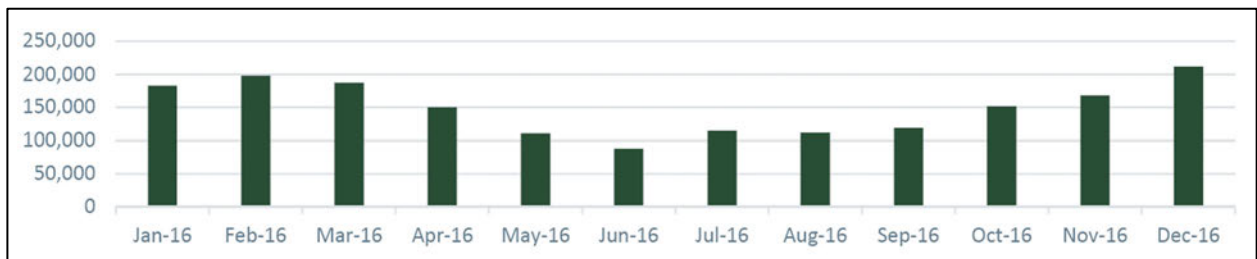
- It is understood that Council has prepared concept design plans for streetscape improvement works within Port Campbell. Some of the recommendations within this report are based on how the current streetscape is being used. Although they may not strictly apply to a future altered streetscape, they will likely add value to the design development process. This report is intended to be a stand alone reference of car parking conditions within Port Campbell.

2 Survey Results

2.1 Seasonality

Parking demands within Port Campbell are expected to vary by time of year in a similar manner with how tourist numbers vary. Tourism data from Parks Victoria shown in Figure 2.1 shows that tourist numbers to the region are highest during summer (December being the peak month) and significantly lower during winter. The demands surveyed as part of this study are therefore expected to be representative of the highest demands experienced in Port Campbell throughout the year.

Figure 2.1 12 Apostles Visitation 2016



Source: Parks Victoria, Shipwreck Coast Visitation 2016.

2.2 Full Results

The following appendices sets out the full survey results in tabular format:

- Appendix A parking demands results, total and long vehicles
- Appendix B parking durations by location

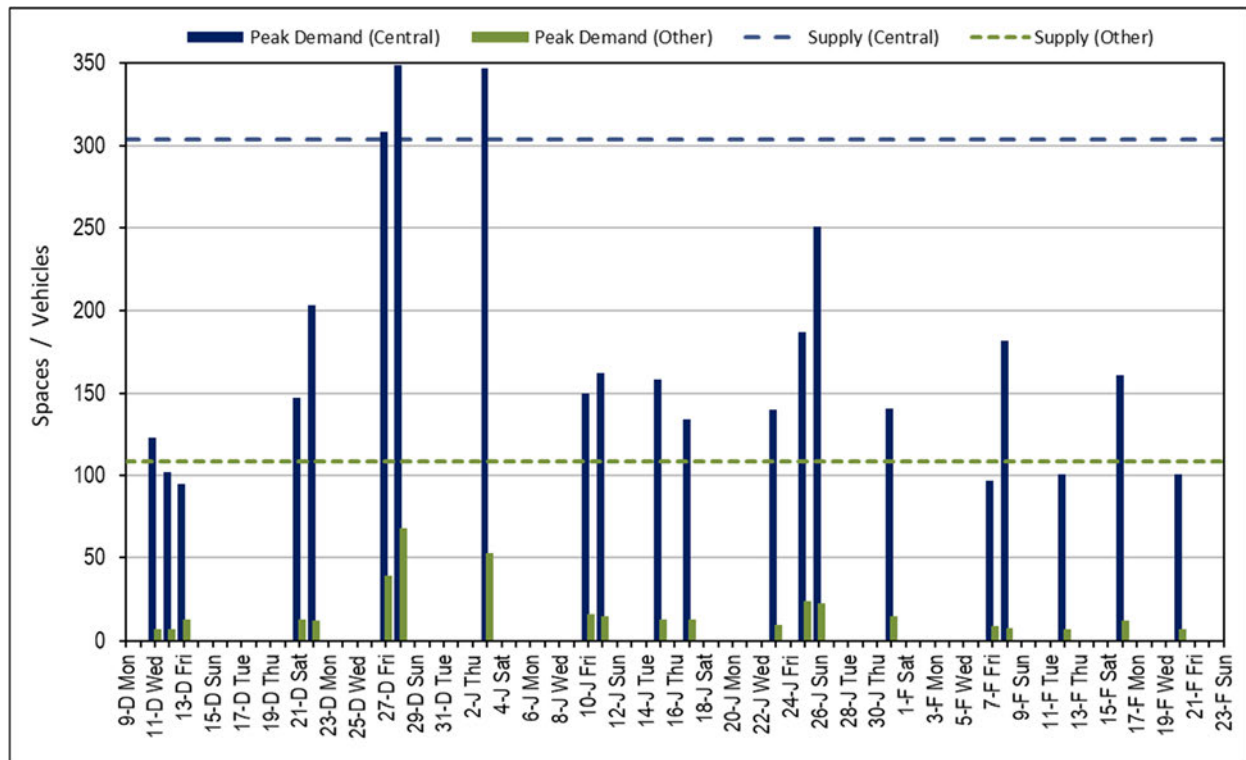
Data summaries in graphical format together with text discussing key findings are set out in the sections below.

2.3 Parking Demands

Overview

Figure 2.2 shows the peak parking demand recorded each day for the central and remaining areas.

Figure 2.2 Peak Demands by Day (Central and Other Areas)



Key findings:

- In the Christmas / New Year period, demands recorded on 27th Dec., 28th Dec. and 3rd Jan. were significantly higher than all other survey days. Demands within the central area exceeded parking space supply on these days. Outside of the central area, demands experienced a sharp rise compared to being consistently low on all other days.
- On Saturday 28th Dec. (the busiest day) peak demands were 349 vehicles in the central area (occupancy rate of 115%) and 417 in the total area (occupancy rate of 101%).
- Some of the ways in which demands were observed exceeding space supply were vehicles parking along kerbside areas beside other designated bays, on the grass adjacent to the Morris Street carpark (ID-8), several cars occupying a bus zone space and 2 cars occupying each boat trailer space within the off-street carpark at the end of Lord Street (ID-1b).
- Outside of the central area, demands were consistently low with at most 24 vehicles within the 109 spaces available, excluding the Christmas / New Year period when a peak demand of 68 vehicles was recorded.
- Except for the Christmas / New Year period, overall parking demands within the central area were less than supply, with at most 251 vehicles recorded within the 304 spaces available (occupancy rate of 83%) on Australia Day (Sunday 26th Jan.).

Demands by Time of Day

Figure 2.3 shows central area parking demands recorded by time on each day. Figure 2.4 shows similar results with demand shown as a percentage of that days peak demand.

Figure 2.3 Total Demands by Time (Central Area)

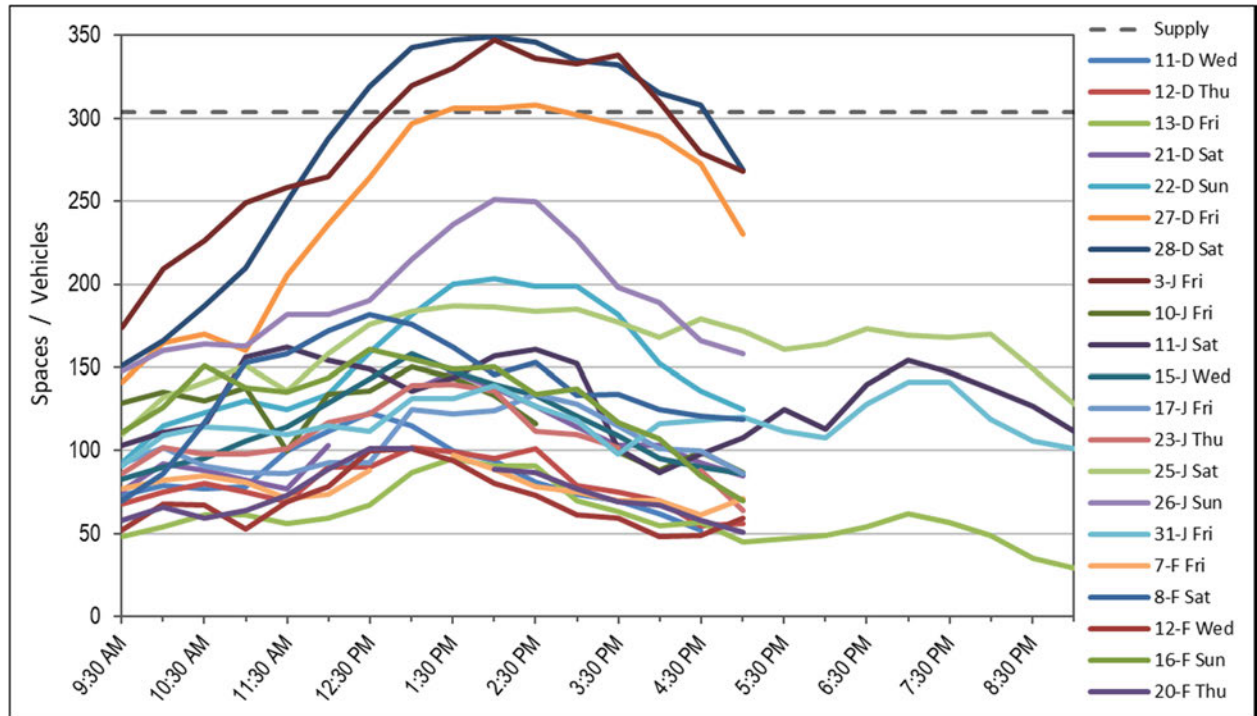
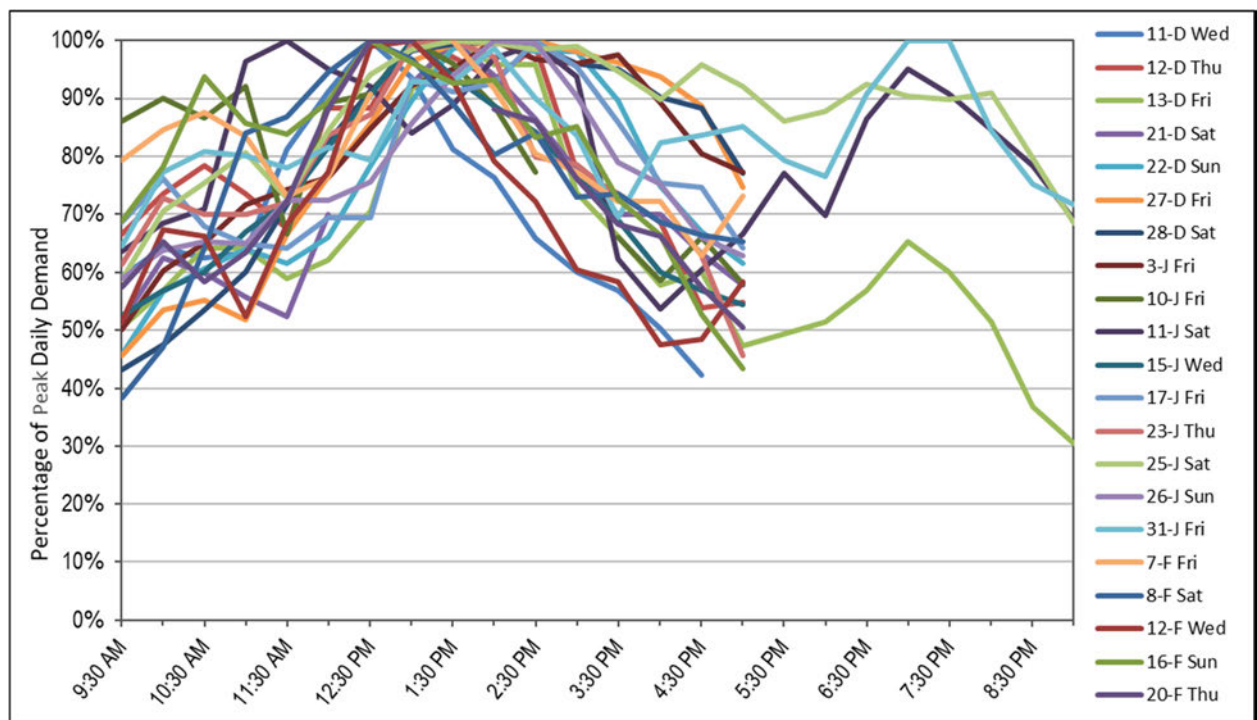


Figure 2.4 Total Demands by Time as a Percentage of Peak Daily Demand (Central Area)



Key findings:

- On the busiest days, peak parking was experienced early to mid afternoon.

- Other than the busiest days, parking demands can be at similar levels throughout the day, while typically peaking during the middle of the day.
- Evening demands can be nearly as high as daytime demands, although typically slightly less. Evening demands peak at around 7:00pm.

Demands by Location

Figure's 2.5 and 2.6 show a map of peak occupancies for 2 key days, being the busiest non Christmas / New Year period day (Australia Day, Sunday 26th Jan.) and the busiest day (Saturday 28th Dec.), respectively.

Figure 2.5 Peak Parking Occupancy Map on the Busiest Day (excl. Christmas / New Year) (Sunday, 26th Jan. 2020 at 2:00pm)



Figure 2.6 Peak Parking Occupancy Map on the Busiest Day (Saturday 28th Dec. 2019 at 2:00pm)



Key findings:

- Lord Street town centre (ID-3), Cairns Street foreshore (ID-10) and Lord Street foreshore (ID-2) are the most sought after parking locations.
- At the busiest times, many motorists choose to park where physically possible within the central area outside of designated spaces, rather than parking in available spaces further away. Many of such vehicles were illegally parked.
- The 12 long bays restricted to boat trailer parking within the end of Lord Street off-street carpark (ID-1b) were often utilised by cars, at times by 24 cars.
- At its peak, the Morris Street off-street carpark (ID-8) with 34 designated spaces and adjacent grass area accommodated 70 parked vehicles. Other than the busiest Christmas / New Year period, this carpark often had low occupancy at times when Lord Street and Cairns Street had high occupancies.

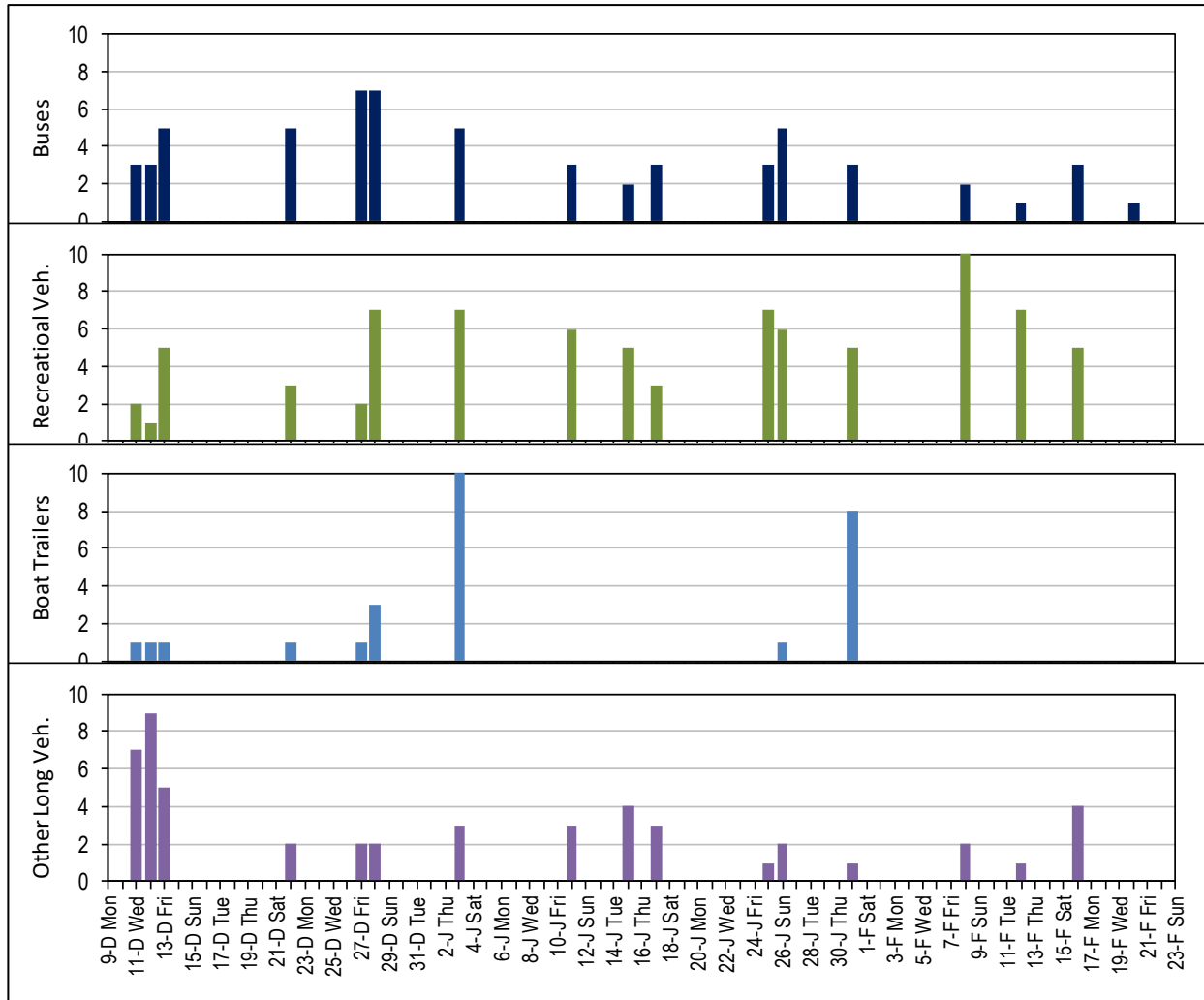
Long Vehicle Demands

Long vehicle parking demands were surveyed with vehicles classified into 4 types:

- (i) buses
- (ii) recreational vehicles (RV's, e.g. motorhome / car + caravan combination)
- (iii) car + boat trailer combination
- (iv) other long vehicles

Figure 2.7 shows the peak long vehicle parking demands on each day. Full results are presented in Appendix A.

Figure 2.7 Peak Long Vehicle Demands by Day



Note: Peak demands for each vehicle type may have occurred at different times of the day (i.e. cannot combine into a total).

Key findings:

- Small numbers of buses, recreational vehicles and other long vehicles were regularly parked in the study area.
- The peak demand of all long vehicles was generally in the order of 10-20 vehicles, representing a small proportion (e.g. 5%) of total parking demands.
- Boat trailer parking was generally very low, but did increase on some days. Such variance is likely associated with weather, sea and fishing conditions. A peak demand of 10 boat trailers occurred on Friday 3rd Jan. at 11:00am. Boat trailer parking occurred at the off-street carpark at end of Lord Street (ID-1), never elsewhere.

2.4 Parking Duration

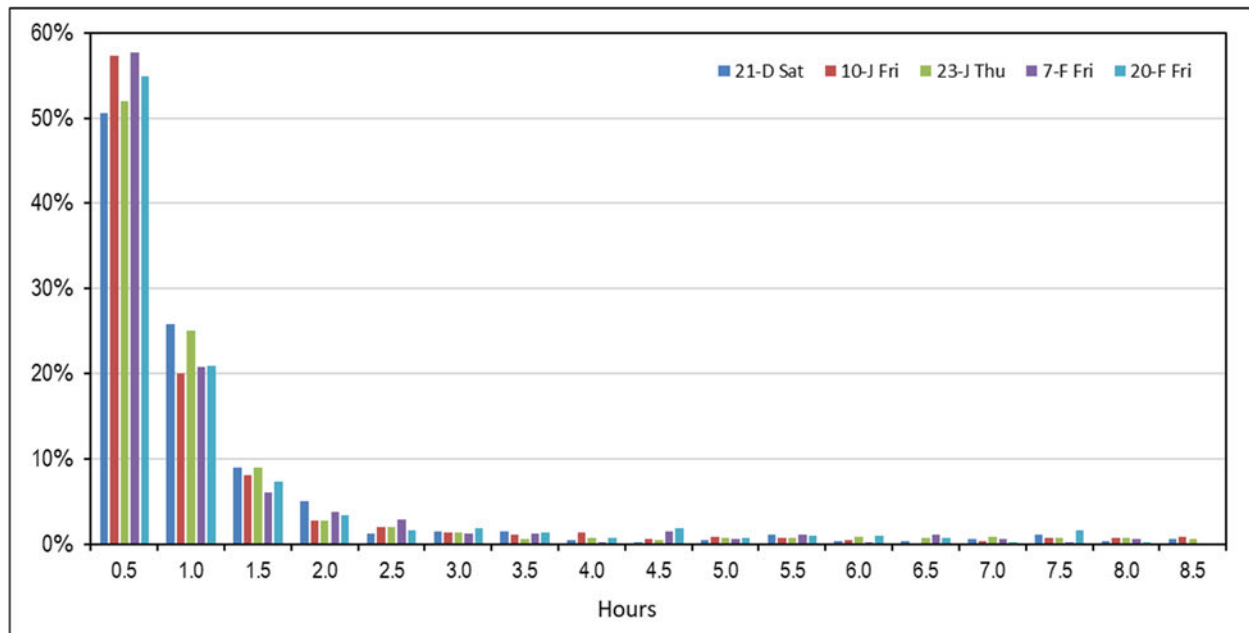
Duration surveys identified each vehicle at half hour intervals between 9:00am - 5:00pm.

A vehicle recorded for only 1 half hour interval may have had a stay duration between 1 minute and 1 hour, a vehicle recorded for 2 concurrent intervals may have had a stay duration between 31 minutes and 1.5 hours, and so on. For the purpose of reporting, all vehicles recorded once are said to have an average duration of stay of half an hour, twice equivalent to 1 hour, and so on.

Some vehicles may have been parked before or after the survey time period and would therefore have a greater duration of stay than surveyed. Therefore, results will have a minor bias of lower average durations than those occurring. For reporting purposes, calculations of average durations exclude vehicles that arrived after 3:00pm (to reduce bias given later arrivals were more likely to have a departure well after 5:00pm which wasn't recorded).

Figure 2.8 shows vehicles durations of stay as a percentage of all vehicles surveyed that day.

Figure 2.8 Percentage of Vehicles by Duration of Stay



Key findings:

- Results were relatively similar on all survey days.
- The vast majority of vehicles arriving into the study area have low durations of stay. Approximately 85% of vehicles surveyed had average durations less than 2 hours.
- Areas that experienced the highest durations of stay were Hennessy Street (ID-12) and the Morris Street off-street carpark (ID-8).
- Lord Street in the town centre (ID-3) experienced the lowest durations of stay.
- The number of unique vehicles arriving into parking spaces surveyed between 9:00am-5:00pm was generally in the order of 550-900 vehicles.

2.5 Questionnaire Responses

Figure 2.9 sets out the questions asked of survey respondents, together with results obtained. There was a total of 88 survey respondents (18 staff and 70 others), representing a mix of local residents, staff, Australian visitors and overseas visitors. Results are presented separately for staff and all other respondents.

Figure 2.9 Questionnaire Results

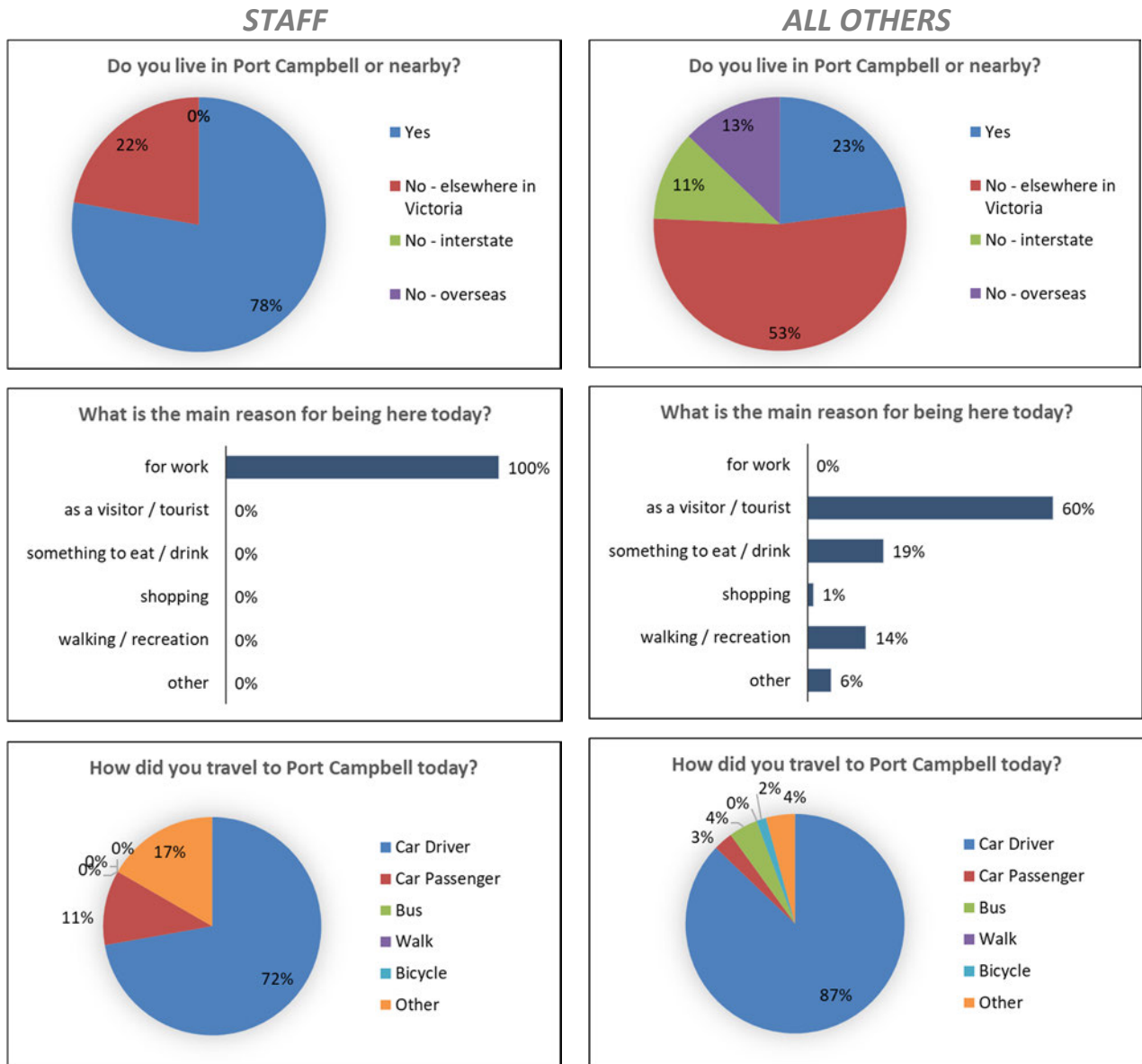
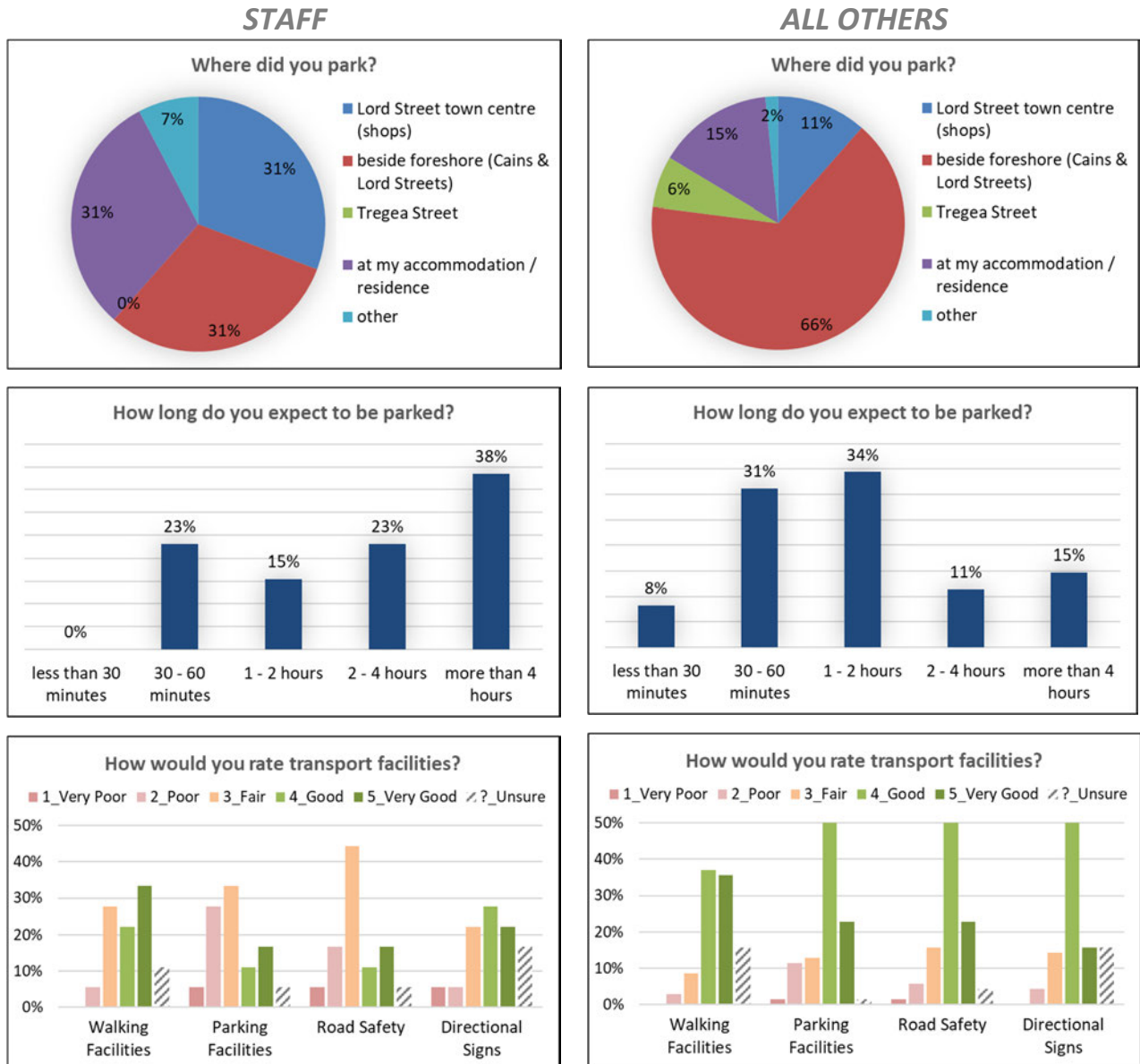


Figure 2.9 Questionnaire Results (CONTINUED)



Key findings:

- A private motor vehicle (car) is the predominate mode of transport (83% staff / 90% others). Noting that 31% of staff parked at accommodation / residence (i.e. then walked).
- Perceptions of parking facilities and road safety varied between staff and other respondents, with staff rating these as fair on average and others rating these as good on average.
- Beside the foreshore was the most popular location for respondents to park, next was Lord Street in the town centre.
- The majority of staff anticipated parking in excess of 2 hours (61%) whereas the majority of other respondents anticipated parking for less than 2 hours (73%).

2.6 Surveyors Observations

Some observations of our survey team are noted as follows:

- Weather conditions appeared to greatly effect visitor numbers within the township.
- On the busiest days, vehicles were observed queuing back onto Lord Street from the petrol station bowsers causing traffic congestion.
- Several near misses were observed as vehicles exited 90 degree parking along Cairns Street foreshore (ID-10c) into the path of oncoming through traffic. Some vehicles park reverse in at this location.
- Vehicles were often observed entering Hennessy Street, travelling to the dead-end and turning around and exiting the street. Some exited at higher speed in frustration.
- Great Ocean Road Trike Tours often had 1 or 2 three wheeled motorcycles parked between approximately 11:00am to 4:00pm on Lord Street at front of their premises.
- On several days a vehicle was observed parked in the opposite direction within the parallel spaces along Cairns Street (ID-10a).
- Police were observed enforcing illegal parking such as vehicles within bus zones.

3 Recommendations

3.1 Supply and Demand

The provision of abundant parking to cater for all likely demand scenarios is a user convenience that is generally not economically viable. In a town centre or shopping centre car parking supply is typically based on catering for a level of spaces that exceed demand on most occasions, such as an 85th percentile. On those infrequent times with higher demands, congestion impacts are tolerated.

The parking surveys demonstrate that public parking within Port Campbell is currently sufficient to cater for demands throughout most of the peak summer period, except for a small number of days during the Christmas / New year period.

Due to congestion experienced at these times, parking demands overflowed beyond the commercial central area into streets such as Hennessy Street (ID-12), Morris Street southeast of Lord Street (ID-6) and Lord Street northeast of Morris Street (ID-4)). However, even at these times numerous vacant spaces remained within these locations meaning that local residents still had access to relatively convenient on-street parking. And visitors parking in these locations, remained less than approximately 350m from central Lord Street, equivalent to a walk time of less than 5 minutes.

It is considered that the severity and frequency of congestion impacts would need to be significantly worse than current levels to justify large investments into new off-street carparks or other works that significantly increase parking space supply in Port Campbell.

3.2 Future Parking Demands

The region has been experiencing significant tourism growth which is expected to continue. The draft Simpson and Timboon Strategic Placement and Simpson Structure Plan - Issues and Opportunities Paper sets out that total trips to the Great Ocean Road Region is expected to increase by 2.8 million by 2026/27 from 5.8 million in 2016/17. And a Great Ocean Road regional tourism summary published by the Victorian Government sets out visitation growth in the order of 8% per annum between 2014-2019. Similar rates of tourism growth, and subsequent increases in parking demands, could be expected for Port Campbell.

3.3 Options to Increase Parking Supply

Notwithstanding comments made above regarding supply and demand, increasing the supply of parking in line with demand growth should continually be part of Council's planning. Accordingly, recommended options are set out below.

Morris Street Council Land

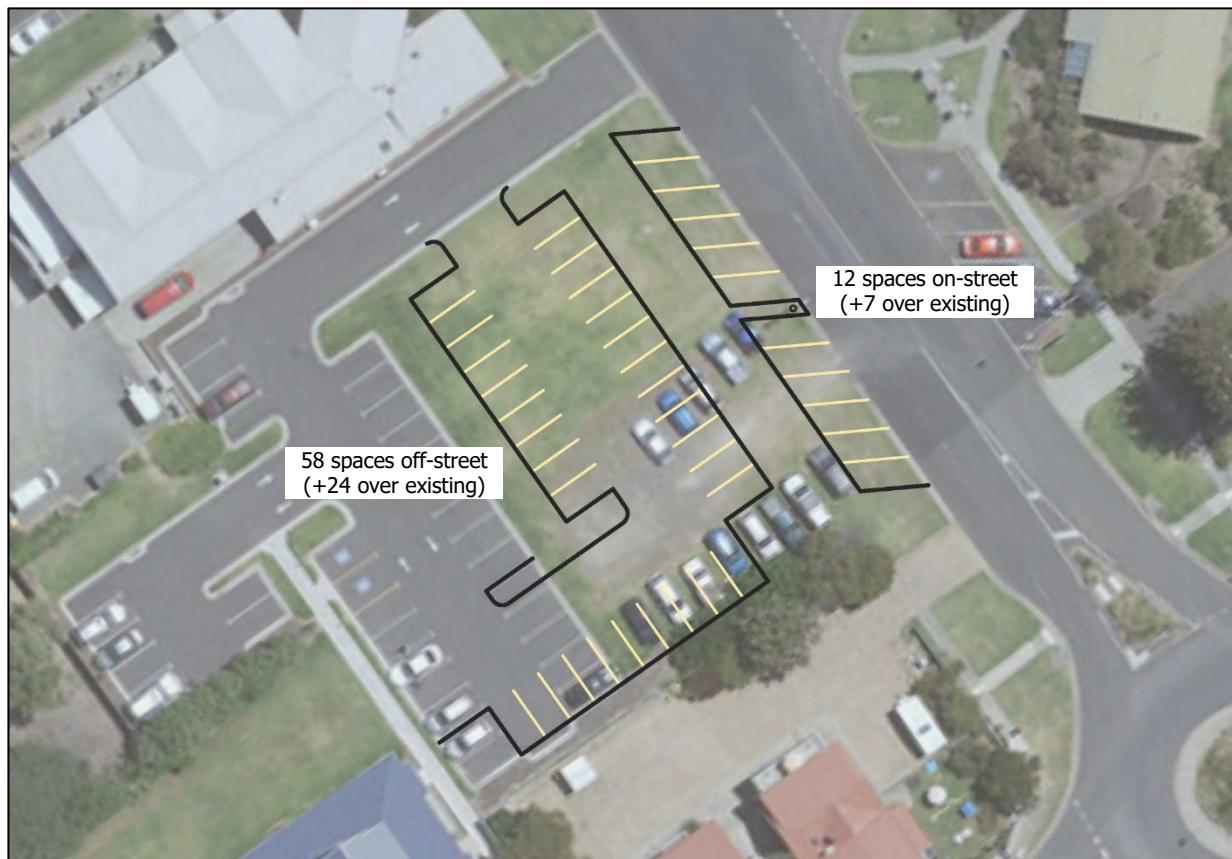
The existing Morris Street off-street carpark (ID-8) is on Council owned land. On this property is a grassed / gravel area (adjacent to the formal carpark) with crossover vehicle access that is used as informal car parking.

Formalised off-street parking could be provided in this area. A formalised carpark that expands upon the existing carpark can improve the ability for vehicles to circulate through the carpark, compared with the current dead-end aisle layout.

Either as a stand along project or in conjunction with the above, there is an opportunity to provide indented angled parking along the street frontage of this property (ID-7c) to increase on-street spaces.

A conceptual design showing these potential options is shown in Figure 3.1.

Figure 3.1 Off-Street and On-Street Parking Opportunities - Morris Street Council Land



Convert Parallel to Angle Parking

Additional parking spaces can be realised by replacing parallel parking with angle parking, subject to road widening to indent the spaces. In addition to the Morris Street option shown in Figure 3.1, potential locations are either Lord Street or Morris Street (near the new public toilets).

Parking for Specific Users

The parking surveys did not indicate any significant congestion problems associated with bus parking, boat trailer parking or disabled parking, all of which have dedicated spaces / restrictions.

Long Vehicle Parking (Recreational Vehicles)

Survey results show that recreational vehicles (e.g. motorhome / caravan) were consistently parked within the study area at similar levels to bus demands. It is recommended that improved RV parking amenity be provided with both dedicated parking and directional signage. An opportunity for dedicated spaces is within the end of Lord Street off-street carpark which is discussed in the next section of this report. Directional signage is also discussed in a later section of this report.

Figure 3.2 Examples of Recreational Vehicles Occupying Car Parking Spaces



Motorcycle Parking

Our surveyors regularly noted motorcycles parking within the study area. No specific motorcycle parking exists in Port Campbell. Motorcycles are commonly parked within a car parking space (can be more than 1 motorcycle per space), other carriageway areas or on the nature strip. A supply rate of 2% of the number of car parking spaces² equates to 6 motorcycle spaces within central Port Campbell. Kerbside areas too small for a car parking space can be suitable for motorcycle parking spaces and such areas would be the ideal location (rather than converting a car parking space). Some examples are noted within images later in this report.

Loading Zones

No specific loading zones exist in Port Campbell. Given car parking along the commercial frontages can be fully occupied, difficulties are likely being experienced for business deliveries and other service vehicle access needs. Many of the businesses appear to have driveway access and it is likely these are utilised for some service vehicle parking. Notwithstanding, it is recommended that a small number (e.g. 1-3) of loading zone spaces are provided in consultation with local traders, with spaces spread throughout the central area.

² Source: Austroads Guide to Traffic Management (Parking).

End of Lord Street

The off-street carpark at the end of Lord Street has 14 car parking spaces (ID-1a), 12 long vehicle spaces restricted to “boat trailers only” (ID-1b), and an area for approximately 8 long vehicles restricted to “boat trailers only 3am-11am, professional boat operators excepted” (ID-1c). It is understood that the 12 long vehicle spaces were modified from a previous 24 standard car parking spaces some time ago. Parts of the old linemarking are still visible.

Boat trailer parking was limited during the surveys, with 2 busy days experiencing peak demands of 10 and 8 in total, respectively. Boat trailer parking was typically highest throughout the morning and limited during the afternoon. Cars were often parked in area ID-1b with 24 cars parked on the busiest days. Peak times for cars was typically midday to mid-afternoon. Given these time of day characteristics, providing exclusive use for any one user group 24/7 appears unnecessary and inefficient.

In consultation with local boat operators and fishing groups, the following changes are recommended:

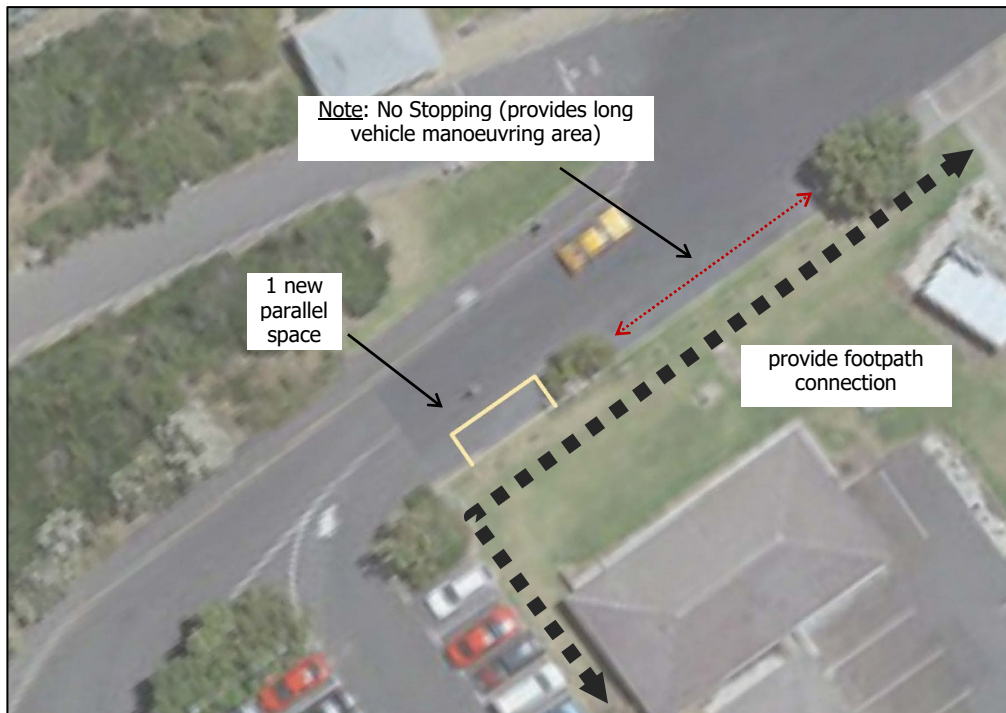
- ID-1c: Provide linemarking to delineate the long spaces and apply parking restrictions that accommodate boat trailer parking while allowing other long vehicle parking (e.g. RV's) at times where possible. A parking restriction of [**P // LONG VEHICLES ONLY**] may be appropriate given boat trailers are likely to get first opportunities with their morning arrival time.
- ID-1b: Modify the 12 long vehicle spaces back to 24 standard car parking spaces and remove the boat trailer parking restriction. Use by boat trailers can continue given their morning arrival time.

Whilst reverse-in boat trailer parking may not be ideal, it is considered a reasonable outcome at this location given that entry is relatively simple (wide bays and acute angle), low pedestrian activity, low vehicular activity and it is the continuation of an existing arrangement. If major changes to the layout of the carpark were to be considered, it would be prudent to investigate improved boat trailer parking layouts at that time.

This off-street carpark lacks footpath connectivity to the town centre via the southeast side of Lord Street. It is recommended that the footpath on this side of Lord Street is extended to provide this connectivity, refer Figure 3.3.

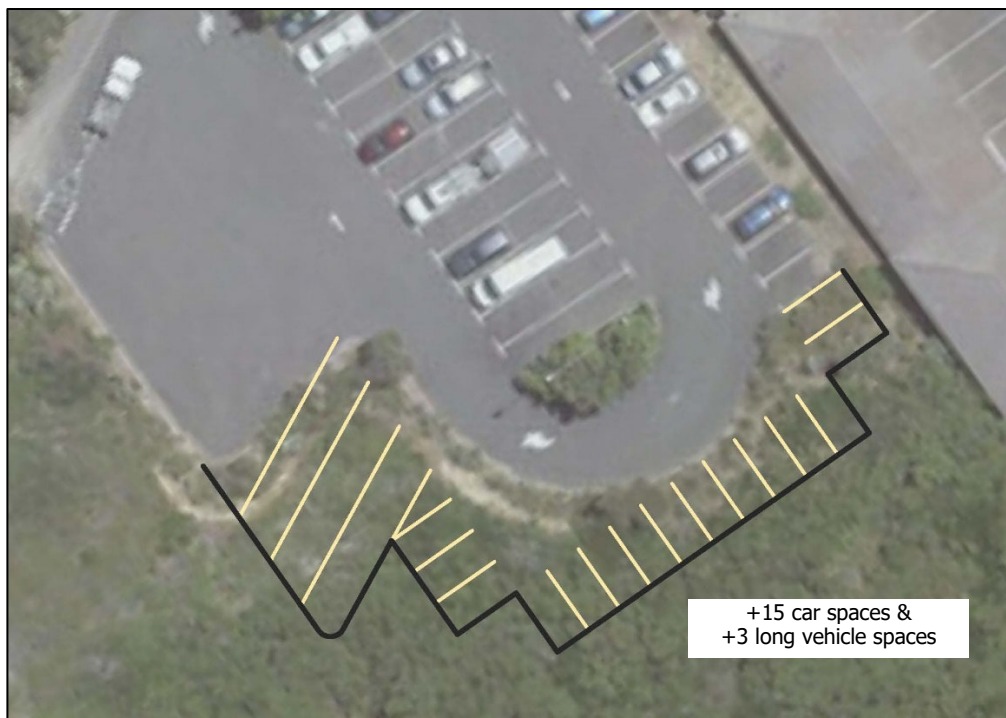
There is also an opportunity to provide 1 space at the far southwest end of Lord Street as shown in Figure 3.3.

Figure 3.3 Footpath at End of Lord Street



Vegetation impacts may be a significant issue with respect to the following. Notwithstanding, existing aisles along the southern edge of the off-street carpark mean that with a relatively small expansion of the carpark, several new car parking and long vehicle bays could be created, refer Figure 3.4.

Figure 3.4 Expansion of End of Lord Street Carpark (ID-1)



3.4 90 Degree On-Street Parking

The 90 degree on-street parking beside the foreshore along Lord Street (ID-2) and Cairns Street (ID-10) has dimensions that locate the manoeuvring room into and out of these spaces across both directions of traffic flow. The Australian Standard for On-Street Car Parking (AS2890.5) specifies that manoeuvring room should be clear of the opposing traffic lane.

In a 60kph speed zone this shortfall would be considered too hazardous. And safety risks could be reduced by converting these spaces to 60 degree. However, in the context of the foreshore (low speed environment) this layout is something that could remain, provided that the streetscape and traffic management items maintain these road segments as low speed environments.

3.5 Parking Management

Time Restrictions

There is just 1 parking space in the study area subject to a time restriction, being quarter hour parking outside the Lord Street supermarket.

Stay duration restrictions are typically one of the first parking management techniques deployed to manage parking demands. With the most desirable parking in a town centre restricted to short stay durations to encourage space turnover and increase the likelihood of vacant spaces being available for visitors and shoppers. While long stay parking is located peripheral to these areas to accommodate staff needs.

Duration of stay and questionnaire survey results demonstrated that the vast majority of parking demands are for short stays (e.g. less than 2 hours).

It is recommended that stay duration time restrictions be implemented along Lord Street (between Morris Street and end, ID-2&3) and Cairns Street along the foreshore (ID-10). A 2 hour restriction is likely to cater for most visitor and shopper needs and be effective (with enforcement) at displacing staff and other long stay parkers. Or a mix of 1 and 2 hour parking could be implemented. Restrictions are needed all 7 days of the week, at times throughout the day, and potentially into early evening. A restriction such as [**2P // 9 AM - 6 PM**] is considered suitable.

Due to the seasonality of parking demands, time restrictions may only be strictly necessary during the summer months. However, the restrictions recommended above are not considered overbearing and should be suitable year round.

Enforcement

The introduction of time restrictions will bring a requirement for greater enforcement activities, with staffing and cost implications. Enforcement will be important to maximise adherence to time restrictions although enforcement frequency could be adjusted with seasonality.

Directional Signage

Parking directional signage would assist visitors find the main parking areas and reduce circulating traffic attempting to find parking in streets such as Hennessy Street. Signs directing motorists exiting Lord Street town centre (ID-3) to other parking options would be effective, refer recommendation in Figure 3.5.

Directional signage to assist visitors travelling in long vehicles (e.g. RV's) is recommended subject to the provision of suitable spaces.

Figure 3.5 Directional Parking Signage Locations



Pedestrian Amenity

Morris Street to the southeast of Lord Street slopes up from Lord Street towards Pitcher Street (average grade of approximately 10%)³. Beside the carriageway to the southeast of the new public toilets are embankments and no footpath provisions, refer Figure 3.6. Vehicles were generally not parked alongside these embankments although they were on the busier survey days. The provision of footpaths along the edge of the road carriageway in this location would increase pedestrian amenity and safety and may increase popularity of these spaces. It is noted that such works may be relatively expensive as retaining walls may be necessary, and vegetation may be impacted.

³ Grade based on VicPlan 10m contour spacing.

Figure 3.6 Pedestrian Access to Morris Street (Great Ocean Road) Parking (ID-6)



More generally, high amenity walking facilities can increase the attractiveness of parking areas peripheral to the central area to assist in spreading parking demands.

Figure 3.7 Example Where Pedestrian Facilities Could be Improved



Other

Tregea Street Bus Parking

A bus parking space on Tregea Street near the public toilets (ID-9c) has regulatory signs at each end that aren't consistent, see Figure 3.8. Under the Road Rules parking in a bus zone is restricted to a "public bus" (e.g. route bus / school bus). Immediately to the north is approximately 11m length of kerb without regulatory restrictions (ID-9b) with linemarking that could be interpreted as a parallel bus space. Regulatory signage should be modified at this location in accordance with usage need, such as [**P // 5MINUTE // BUSES ONLY**].

Figure 3.8 Tregea Street Bus Space Signage (ID-9c)



Streetscape Works

Parking surveys identified that at peak times, several vehicles use carriageway areas outside of designated spaces to park, such as the example in Figure 3.9. Streetscape works and parking signage should clarify where and where not parking is permitted.

Figure 3.9 Example of Carriageway Area Not Intended as Parking Space but can be Utilised as a Space (also shows example of where motorcycle parking could be provided)



Morris Street Angle Parking

Figure 3.10 shows recommended linemarking to clarify existence of a parking space on Morris Street outside the hotel (ID-6b).

Figure 3.10 Formalisation of Angled Parking Space - Morris Street Outside Hotel (ID-6b)



Morris Street Parking at Visitor Information

Figure 3.11 shows recommended changes to improve parking restriction ambiguity on Morris Street (ID-7a & 7b).

Figure 3.11 Morris Street Parking at Visitor Information Centre (ID-7a & 7b)



Morris Street Parking at New Toilets

Figure 3.12 shows a recommended linemarking change on Morris Street (ID-6a).

Figure 3.12 Morris Street Parking at New Public Toilets (ID-6a)



Monitoring

It is recommended that parking conditions are monitored following this study to confirm expectations of limited parking congestion throughout the winter months and to make a comparison of this summers results with following years.



Appendix A Parking Demand Data



Wednesday 11-Dec-19 (weather: overcast, max. of 16)																					
ID	Location	Segment	Side	Restrictions	Supply	Demands															
						9:30	10:00	10:30	11:00	11:30	12:00	12:30	13:00	13:30	14:00	14:30	15:00	15:30	16:00	16:30	17:00
1a	off-street carpark - end of Lord St		-		14	0	0	0	0	0	0	0	0	0	0	0	0	1	0	0	0
1b				P boat trailers only	12	0	0	0	1	0	1	2	1	2	1	1	0	0	0	0	
1c				P boat trailers only 3am-11am	8	1	1	2	1	1	0	0	0	0	0	1	0	0	0	0	
2a	Lord St (foreshore)	Caims St - end	NW	P disabled	2	0	0	0	0	0	0	1	0	0	0	0	0	0	0	0	
2b				-	28	3	4	3	6	10	14	12	13	16	14	10	10	10	6	5	
2c			SE	-	13	2	4	4	4	5	10	8	7	7	7	4	6	7	3	5	
3a	Lord St (town centre)	Morris St - Caims St	NW	P disabled	1	0	0	0	0	0	0	0	0	0	0	0	0	0	0	0	
3b				1/4P 9am-5pm Mon-Fri	1	1	1	1	1	1	1	1	1	1	1	1	0	1	1	0	
3c				-	25	16	18	19	11	14	21	23	19	15	19	16	15	14	12	12	
3d			SE	-	16	14	11	13	13	12	12	14	14	10	12	13	12	10	9	9	
4a	Lord St (GOR)	Morris St - McCue St	NW	Bus Zone	3	0	0	0	0	0	0	0	0	0	0	0	0	0	0	0	
4b				-	18	0	0	0	0	0	1	1	0	1	0	0	0	0	0	0	
4c			SE	-	23	0	1	2	2	1	1	3	1	1	2	1	1	0	0	0	
5	off-street carpark - recreation reserve			-	11	2	2	2	2	2	4	4	4	4	4	4	2	3	7	4	
6a	Morris St (GOR)	Lord St - Pitcher St	NE	-	23	3	2	2	2	2	2	2	2	2	2	1	0	0	0	0	
6b			SW	-	8	2	2	2	1	1	0	1	1	0	0	0	0	0	1	1	
6c				-	22	0	0	0	0	0	1	1	0	0	0	0	0	0	0	0	
7a	Morris St (VIS)	Lord St - Tregea St	NE	P disabled	1	0	0	0	1	0	0	0	0	0	0	0	0	0	0	0	
7b				-	4	1	0	0	1	2	0	2	1	0	0	1	2	0	2	0	
7c			SW	-	5	0	1	1	0	0	0	1	0	0	0	0	0	0	1	0	
8a	off-street carpark - Morris St			P disabled	2	0	0	0	0	0	0	0	0	0	0	0	0	0	0	0	
8b				-	32	7	10	9	9	9	7	7	7	6	7	7	6	6	3	2	
9a	Tregea St	Morris St - Caims St	NW	-	39	1	1	1	1	2	5	4	4	4	0	2	0	0	0	0	
9b				-	2	0	0	0	0	0	0	1	1	1	1	1	0	0	0	0	
9c				Bus Zone (P 5min)	1	0	0	0	0	0	0	0	0	0	0	1	0	1	0	0	
9d			SE	-	18	4	4	4	5	12	9	9	9	6	2	3	1	0	3	4	
10a	Caims St (foreshore)	Lord St - Tregea St	NE	P trucks & buses prohibited	10	5	3	1	3	3	8	5	5	6	7	4	4	3	2	3	
10b			SW	P disabled	2	0	0	0	1	1	1	0	0	0	0	1	0	0	0	0	
10c				-	29	11	15	13	14	22	15	24	24	17	15	7	11	13	11	7	
11a	Caims St	Lord St - Hennessy St	NE	-	5	2	2	2	2	2	2	3	3	3	2	2	2	2	2	1	
11b			SW	Bus Zone	2	0	0	0	0	0	1	1	1	1	1	0	1	2	0	0	
12a	Hennessy St	Morris St - Caims St	NW	-	17	1	1	1	1	1	0	0	0	0	0	1	1	1	1	1	
12b			SE	-	17	0	0	0	0	0	0	0	0	0	0	0	0	1	0	0	
Total					414	76	83	82	82	103	116	130	118	103	97	83	77	74	64	54	
Central Area Total					304	73	79	77	78	100	112	123	115	100	94	81	74	70	62	52	

Notes: (i) Public toilets construction occurring at recreation reserve (area ID-5).

Legend: 0-50% 51-70% 71-85% 86-100% >100% occupancy rate



Wednesday 11-Dec-19 (weather: overcast, max. of 16)																					
ID	Location	Segment	Side	Restrictions	Supply	Long Vehicle Demands															
						9:30	10:00	10:30	11:00	11:30	12:00	12:30	13:00	13:30	14:00	14:30	15:00	15:30	16:00	16:30	17:00
1a	off-street carpark - end of Lord St			-	14	0	0	0	0	0	0	0	0	0	0	0	0	0	0	0	0
1b				P boat trailers only	12	0	0	0	0	0	0	0	0	0	0	0	0	0	0	0	0
1c				P boat trailers only 3am-11am	8	BT1	BT1	BT1	BT1	BT1	0	0	0	0	0	0	0	0	0	0	0
2a	Lord St (foreshore)	Caims St - end	NW	P disabled	2	0	0	0	0	0	0	0	0	0	0	0	0	0	0	0	0
2b				-	28	0	0	0	0	0	0	0	0	0	0	0	0	0	0	0	0
2c				SE -	13	0	0	0	0	0	RV1	RV2	RV1	RV1	LV1	0	0	0	0	0	RV1
3a	Lord St (town centre)	Morris St - Caims St	NW	P disabled	1	0	0	0	0	0	0	0	0	0	0	0	0	0	0	0	0
3b				1/4P 9am-5pm Mon-Fri	1	0	0	0	0	0	0	0	0	0	0	0	0	0	0	0	0
3c				-	25	0	0	0	0	0	0	0	0	0	B1	B1	0	0	0	0	0
3d				SE -	16	LV1	LV1	LV1	LV1	0	0	0	0	RV1	RV1	RV1	LV1	0	0	0	0
4a	Lord St (GOR)	Morris St - McCue St	NW	Bus Zone	3	0	0	0	0	0	0	0	0	0	0	0	0	0	0	0	0
4b				-	18	0	0	0	0	0	0	0	0	0	0	0	0	0	0	0	0
4c				SE -	23	0	LV1	LV1	LV1	0	0	0	0	LV1	LV1	LV1	0	LV1	0	0	0
5	off-street carpark - recreation reserve			-	11	0	0	0	0	0	0	0	0	0	0	0	0	0	0	0	0
6a	Morris St (GOR)	Lord St - Pitcher St	NE	-	23	0	0	0	0	0	0	0	0	0	0	0	LV1	0	0	0	0
6b				SW -	8	0	0	0	0	0	0	0	0	0	0	0	0	0	0	0	0
6c				-	22	0	0	0	0	0	0	0	0	0	0	0	0	0	0	0	0
7a	Morris St (VIS)	Lord St - Tregea St	NE	P disabled	1	0	0	0	0	0	0	0	0	0	0	0	0	0	0	0	0
7b				-	4	RV1	0	0	0	0	0	0	0	0	0	0	0	0	0	0	0
7c				SW -	5	0	0	0	0	0	0	0	0	0	0	0	0	0	0	0	0
8a	off-street carpark - Morris St			P disabled	2	0	0	0	0	0	0	0	0	0	0	0	0	0	0	0	0
8b				-	32	0	0	0	0	0	0	0	0	0	0	0	0	0	0	0	0
9a	Tregea St	Morris St - Caims St	NW	-	39	LV1	LV1	LV1	LV1	LV1	LV1	LV1	LV1	LV1	0	0	0	0	0	0	0
9b				-	2	0	0	0	0	0	0	B1	B1	B1	B1	B1	B1	0	0	0	0
9c				Bus Zone (P 5min)	1	0	0	0	0	0	0	0	0	0	0	LV1	0	B1	0	0	0
9d				SE -	18	LV2	LV1	LV1	LV1	LV1	LV1	LV1	LV1	LV1	0	0	0	0	0	LV1	LV1
10a	Caims St (foreshore)	Lord St - Tregea St	NE	P trucks & buses prohibited	10	LV3	LV1	LV1	LV1	LV1	0	LV1	LV1	LV1	LV2	LV1	LV2	LV1	LV1	LV1	0
10b				SW P disabled	2	0	0	0	0	0	0	0	0	0	0	0	0	0	0	0	0
10c				-	29	0	0	0	0	0	0	0	0	0	0	0	0	0	0	0	0
11a	Caims St	Lord St - Hennessy St	NE	-	5	0	0	0	0	0	0	LV1	LV1	LV1	0	0	0	0	0	0	0
11b				SW Bus Zone	2	0	0	0	0	0	0	B1	B1	B1	B1	0	B1	LV2	0	0	0
12a	Hennessy St	Morris St - Caims St	NW	-	17	0	0	0	0	0	0	0	0	0	0	0	0	0	0	0	0
12b				SE -	17	0	0	0	0	0	0	0	0	0	0	0	0	0	0	0	0
Total					414	9	6	6	6	4	3	8	9	10	8	5	5	4	2	3	
Central Area Total					304																

Notes: (i) Public toilets construction occurring at recreation reserve (area ID-5).

Legend: B = bus BT = boat trailer RV = motorhome / car+caravan LV = other



Thursday		12-Dec-19		(weather: overcast & showers, max. of 16)																	
ID	Location	Segment	Side	Restrictions	Supply	Demands															
						9:30	10:00	10:30	11:00	11:30	12:00	12:30	13:00	13:30	14:00	14:30	15:00	15:30	16:00	16:30	17:00
1a	off-street carpark - end of Lord St		-		14	0	0	0	0	0	0	0	0	0	0	0	0	0	0	0	1
1b				P boat trailers only	12	1	0	0	0	0	0	0	1	1	0	0	1	1	0	0	
1c				P boat trailers only 3am-11am	8	1	1	1	1	1	1	1	1	1	1	0	0	0	0	0	
2a	Lord St (foreshore)	Caims St - end	NW	P disabled	2	0	0	0	0	0	0	0	0	0	0	0	0	0	0	0	
2b				-	28	2	4	6	5	8	9	9	9	11	13	10	7	10	11	6	7
2c			SE	-	13	4	3	4	3	3	3	3	4	3	3	4	6	3	4	1	1
3a	Lord St (town centre)	Morris St - Caims St	NW	P disabled	1	0	0	0	0	0	0	0	0	0	0	1	0	0	0	0	
3b				1/4P 9am-5pm Mon-Fri	1	1	1	0	0	0	1	1	0	1	1	1	0	1	1	1	1
3c				-	25	18	16	16	16	12	21	22	24	24	17	19	16	16	14	12	17
3d			SE	-	16	11	10	12	10	11	14	14	14	10	12	10	13	14	10	10	9
4a	Lord St (GOR)	Morris St - McCue St	NW	Bus Zone	3	0	0	0	0	0	0	0	0	0	0	0	0	0	0	0	0
4b				-	18	1	1	0	0	0	0	0	0	1	0	0	1	0	0	0	0
4c			SE	-	23	0	1	1	2	1	0	0	0	0	0	0	0	0	0	0	0
5	off-street carpark - recreation reserve			-	11	0	3	3	6	4	6	5	3	3	3	2	2	1	2	1	1
6a	Morris St (GOR)	Lord St - Pitcher St	NE	-	23	1	1	1	1	2	2	2	3	2	5	2	2	2	2	0	0
6b			SW	-	8	1	1	0	0	0	3	2	2	1	1	3	1	0	0	0	2
6c				-	22	0	0	0	0	0	1	0	0	0	0	0	0	0	0	0	0
7a	Morris St (VIS)	Lord St - Tregea St	NE	P disabled	1	0	0	0	0	0	0	0	0	0	0	0	0	0	0	0	0
7b				-	4	1	1	1	0	0	1	1	2	4	4	3	0	0	0	0	0
7c			SW	-	5	0	0	1	1	1	0	0	0	1	0	0	0	0	0	0	0
8a	off-street carpark - Morris St			P disabled	2	0	0	0	0	0	0	0	0	0	0	0	0	0	0	0	0
8b				-	32	7	7	6	6	6	7	7	8	10	10	10	8	7	6	6	4
9a	Tregea St	Morris St - Caims St	NW	-	39	4	4	5	5	5	1	1	2	2	0	0	0	1	0	0	0
9b				-	2	0	0	0	0	0	0	0	0	0	0	1	0	0	0	0	0
9c				Bus Zone (P 5min)	1	0	0	0	0	0	0	0	0	1	0	0	0	0	0	0	0
9d			SE	-	18	7	7	6	7	2	5	4	7	4	2	10	1	3	1	1	2
10a	Caims St (foreshore)	Lord St - Tregea St	NE	P trucks & buses prohibited	10	4	8	7	4	3	4	5	7	5	5	6	5	6	5	3	1
10b			SW	P disabled	2	0	0	0	0	0	0	0	0	0	0	0	0	0	0	0	0
10c				-	29	4	6	8	7	8	13	13	16	14	16	20	17	9	10	12	10
11a	Caims St	Lord St - Hennessy St	NE	-	5	2	3	3	3	3	2	2	2	2	2	2	2	1	3	2	2
11b			SW	Bus Zone	2	0	0	0	0	0	1	0	1	2	2	1	1	2	0	0	1
12a	Hennessy St	Morris St - Caims St	NW	-	17	1	1	1	1	1	1	1	2	2	1	2	2	2	1	2	2
12b			SE	-	17	1	1	1	1	2	1	1	1	1	1	2	1	2	1	2	0
Total					414	72	80	83	79	73	97	94	108	106	101	107	86	80	74	58	61
Central Area Total					304	68	75	80	75	69	90	90	102	99	95	101	79	75	70	55	56

Notes: (i) Public toilets construction occurring at recreation reserve (area ID-5).

Legend: 0-50% 51-70% 71-85% 86-100% >100% occupancy rate



Thursday		12-Dec-19		(weather: overcast & showers, max. of 16)		Long Vehicle Demands																
ID	Location	Segment	Side	Restrictions	Supply	9:30	10:00	10:30	11:00	11:30	12:00	12:30	13:00	13:30	14:00	14:30	15:00	15:30	16:00	16:30	17:00	
1a	off-street carpark - end of Lord St		-		14	0	0	0	0	0	0	0	0	0	0	0	0	0	0	0	0	
1b				P boat trailers only	12	0	0	0	0	0	0	0	0	0	0	0	0	RV1	0	0	0	
1c				P boat trailers only 3am-11am	8	BT1	BT1	BT1	BT1	BT1	BT1	BT1	BT1	BT1	BT1	0	0	0	0	0	0	
2a	Lord St (foreshore)	Caims St - end	NW	P disabled	2	0	0	0	0	0	0	0	0	0	0	0	0	0	0	0	0	
2b				-	28	0	LV1	LV1	0	0	0	0	0	0	0	0	0	0	0	0	0	
2c			SE	-	13	0	0	0	0	0	0	0	0	RV1	0	0	LV1	LV1	LV1	LV1	0	
3a	Lord St (town centre)	Morris St - Caims St	NW	P disabled	1	0	0	0	0	0	0	0	0	0	0	0	0	0	0	0	0	
3b				1/4P 9am-5pm Mon-Fri	1	0	0	0	0	0	0	0	0	0	0	0	0	0	0	0	0	
3c				-	25	0	0	LV1	0	0	0	0	0	0	0	0	0	0	0	0	0	
3d			SE	-	16	0	0	0	0	0	0	0	0	0	0	0	0	0	0	0	0	
4a	Lord St (GOR)	Morris St - McCue St	NW	Bus Zone	3	0	0	0	0	0	0	0	0	0	0	0	0	0	0	0	0	
4b				-	18	0	0	0	0	0	0	0	0	LV1	0	0	0	0	0	0	0	
4c			SE	-	23	0	0	0	0	0	0	0	0	0	0	0	0	0	0	0	0	
5	off-street carpark - recreation reserve		-		11	0	LV1	LV1	LV1	LV1	0	0	LV1	LV1	0	0	0	0	0	LV1	0	
6a	Morris St (GOR)	Lord St - Pitcher St	NE	-	23	0	0	0	0	0	LV1	0	LV1	LV1	LV4	LV2	LV2	LV2	LV2	0	0	
6b			SW	-	8	0	0	0	0	0	B1	0	B1	0	0	0	0	0	0	0	0	
6c				-	22	0	0	0	0	0	0	0	0	0	0	0	0	0	0	0	0	
7a	Morris St (VIS)	Lord St - Tregea St	NE	P disabled	1	0	0	0	0	0	0	0	0	0	0	0	0	0	0	0	0	
7b				-	4	0	0	0	0	0	0	0	0	0	0	0	0	0	0	0	0	
7c			SW	-	5	0	0	LV1	LV1	LV1	0	0	0	0	0	0	0	0	0	0	0	
8a	off-street carpark - Morris St			P disabled	2	0	0	0	0	0	0	0	0	0	0	0	0	0	0	0	0	
8b				-	32	0	0	0	0	0	0	0	0	0	0	0	0	0	0	0	0	
9a	Tregea St	Morris St - Caims St	NW	-	39	LV2	LV2	LV2	LV2	LV1	LV1	LV1	LV1	LV1	0	0	0	0	0	0	0	
9b				-	2	0	0	0	0	0	0	0	0	0	0	B1	0	0	0	0	0	
9c				Bus Zone (P 5min)	1	0	0	0	0	0	0	0	0	B1	0	0	0	0	0	0	0	
9d			SE	-	18	0	0	LV1	LV1	LV1	B1	B1	B1	0	0	0	0	0	0	0	0	
10a	Caims St (foreshore)	Lord St - Tregea St	NE	P trucks & buses prohibited	10	LV1	LV2	LV2	LV1	LV1	LV2	LV1	LV1	LV1	0	0	0	0	0	RV 1	0	
10b			SW	P disabled	2	0	0	0	0	0	0	0	0	0	0	0	0	0	0	0	0	
10c				-	29	0	0	0	0	0	0	0	0	0	0	0	0	0	0	0	RV1	
11a	Caims St	Lord St - Hennessy St	NE	-	5	0	0	0	0	0	0	0	0	0	0	0	0	0	0	0	0	
11b			SW	Bus Zone	2	0	0	0	0	0	0	0	0	B1	B2	B2	B1	B1	B1	0	B1	
12a	Hennessy St	Morris St - Caims St	NW	-	17	0	0	0	0	0	0	0	0	0	0	0	0	0	0	0	0	
12b			SE	-	17	0	0	0	0	0	0	0	0	0	0	0	0	0	0	LV1	LV1	
Total					414	4	7	10	7	6	7	4	8	10	7	4	4	5	6	2	2	
Central Area Total					304																	

Notes: (i) Public toilets construction occurring at recreation reserve (area ID-5).

Legend: B = bus BT = boat trailer RV = motorhome / car+caravan LV = other



Friday		13-Dec-19		(weather: overcast, max. of 15)		Demands																							
ID	Location	Segment	Side	Restrictions	Supply	9:30	10:00	10:30	11:00	11:30	12:00	12:30	13:00	13:30	14:00	14:30	15:00	15:30	16:00	16:30	17:00	17:30	18:00	18:30	19:00	19:30	20:00	20:30	21:00
1a	off-street carpark - end of Lord St		-		14	0	0	0	0	0	0	0	0	0	0	0	0	0	0	0	0	0	0	0	0	0	0	0	0
1b				P boat trailers only	12	0	0	1	0	0	0	0	0	0	0	0	0	0	0	0	0	1	1	0	1	1	1	1	1
1c				P boat trailers only 3am-11am	8	1	1	1	1	1	1	0	0	0	0	0	0	0	0	0	0	0	0	0	0	0	0	0	0
2a	Lord St (foreshore)	Cairns St - end	NW	P disabled	2	0	0	0	0	0	0	0	0	0	1	1	0	0	0	0	0	0	0	0	0	0	0	0	0
2b				-	28	2	2	3	3	4	7	9	8	9	13	12	7	3	2	1	2	2	2	2	4	3	2	2	2
2c			SE	-	13	1	1	1	1	1	2	2	6	8	7	5	1	1	2	2	2	3	2	2	3	3	3	3	2
3a	Lord St (town centre)	Morris St - Cairns St	NW	P disabled	1	0	0	0	0	0	0	0	0	0	0	0	0	0	0	1	0	0	0	0	0	0	0	0	
3b				1/4P 9am-5pm Mon-Fri	1	1	0	0	1	1	0	0	1	1	1	1	1	0	1	1	1	1	1	1	1	1	0	1	0
3c				-	25	12	13	14	9	12	9	11	15	15	19	20	18	15	15	18	17	14	15	16	23	21	17	5	6
3d			SE	-	16	9	12	12	14	10	10	15	12	13	11	16	13	11	11	10	6	9	9	13	14	13	9	5	4
4a	Lord St (GOR)	Morris St - McCue St	NW	Bus Zone	3	0	0	0	0	0	0	0	0	0	0	0	0	0	0	0	0	0	0	0	0	0	0	0	0
4b				-	18	0	0	0	0	0	0	0	0	0	0	0	0	0	0	0	0	0	0	0	0	0	0	0	0
4c			SE	-	23	1	0	0	0	0	0	0	0	0	0	0	0	0	0	0	0	0	0	0	0	0	0	0	0
5	off-street carpark - recreation reserve			-	11	3	3	4	4	5	6	5	5	4	4	3	4	4	2	2	2	2	2	0	1	1	1	0	0
6a	Morris St (GOR)	Lord St - Pitcher St	NE	-	23	2	2	1	2	2	1	1	1	1	1	1	1	1	2	0	0	0	0	0	0	0	2	2	0
6b			SW	-	8	0	0	0	0	0	0	0	1	1	1	3	6	5	3	2	1	1	3	7	6	7	6	4	5
6c				-	22	1	1	1	1	1	1	1	1	1	1	1	1	1	1	1	0	0	0	0	0	0	0	0	0
7a	Morris St (VIS)	Lord St - Tregoe St	NE	P disabled	1	0	0	0	0	0	0	0	0	0	0	0	0	0	0	0	0	0	0	0	0	0	0	0	0
7b				-	4	0	0	2	2	0	0	1	1	3	1	0	0	0	0	1	0	0	0	0	0	0	0	0	0
7c			SW	-	5	0	0	0	0	0	0	0	0	0	0	0	0	0	0	0	0	0	0	0	0	0	0	0	0
8a	off-street carpark - Morris St			P disabled	2	0	0	0	0	0	0	0	0	0	0	0	0	0	0	0	0	0	0	0	0	0	0	0	0
8b				-	32	9	8	6	6	6	6	6	6	7	4	5	5	6	4	4	4	3	5	4	3	4	5	5	4
9a	Tregoe St	Morris St - Cairns St	NW	-	39	0	0	0	1	0	0	0	0	0	1	1	0	0	0	0	0	0	0	0	1	1	3	1	1
9b				-	2	0	0	0	0	0	0	0	0	0	1	0	0	0	0	0	1	1	1	1	0	0	0	0	0
9c				Bus Zone (P 5min)	1	0	0	0	0	0	0	0	0	1	1	1	1	0	1	1	1	0	0	0	0	0	0	0	0
9d			SE	-	18	3	3	4	5	5	4	4	5	5	3	3	3	4	2	2	2	4	3	2	1	1	1	4	2
10a	Cairns St (foreshore)	Lord St - Tregoe St	NE	P trucks & buses prohibited	10	4	4	4	3	2	3	3	5	6	5	4	2	4	5	3	0	1	2	2	2	2	1	1	1
10b			SW	P disabled	2	0	0	0	0	1	0	0	0	0	0	0	0	0	1	0	0	0	0	0	0	0	0	0	0
10c				-	29	0	2	5	6	3	6	8	20	20	16	14	11	11	4	9	6	4	5	7	8	6	4	5	6
11a	Cairns St	Lord St - Hennessy St	NE	-	5	1	3	3	3	3	2	2	2	2	3	3	3	3	2	2	2	1	2	1	1	0	0	0	
11b			SW	Bus Zone	2	0	0	0	0	1	1	0	2	2	0	0	0	0	0	2	0	0	0	0	0	2	1	0	0
12a	Hennessy St	Morris St - Cairns St	NW	-	17	1	2	1	2	2	2	0	0	0	1	1	1	1	1	1	1	1	1	2	2	2	2	2	2
12b			SE	-	17	0	0	0	0	0	0	0	0	0	0	0	0	0	0	0	1	2	2	1	2	2	2	2	
T Total					414	51	57	63	64	60	63	68	91	99	94	96	78	70	60	63	48	51	56	64	72	70	60	43	38
Central Area Total					304	48	54	61	61	56	59	67	87	95	91	91	70	63	55	57	45	47	49	54	62	57	49	35	29

Notes: (i) Public toilets construction occurring at recreation reserve (area ID-5).

Legend: 0-50% 51-70% 71-85% 86-100% >100% occupancy rate



Friday		13-Dec-19		(weather: overcast, max. of 15)		Long Vehicle Demands																									
ID	Location	Segment	Side	Restrictions	Supply	9:30	10:00	10:30	11:00	11:30	12:00	12:30	13:00	13:30	14:00	14:30	15:00	15:30	16:00	16:30	17:00	17:30	18:00	18:30	19:00	19:30	20:00	20:30	21:00		
1a	off-street carpark - end of Lord St		-		14	0	0	0	0	0	0	0	0	0	0	0	0	0	0	0	0	0	0	0	0	0	0	0	0		
1b				P boat trailers only	12	0	0	RV1	0	0	0	0	0	0	0	0	0	0	0	0	0	0	0	0	0	0	0	0			
1c				P boat trailers only 3am-11am	8	BT1	BT1	BT1	BT1	BT1	BT1	0	0	0	0	0	0	0	0	0	0	0	0	0	0	0	0	0	0		
2a	Lord St (foreshore)	Cairns St - end	NW	P disabled	2	0	0	0	0	0	0	0	0	0	0	0	0	0	0	0	0	0	0	0	0	0	0	0			
2b				-	28	0	0	0	0	0	RV1	0	0	0	0	0	0	0	0	0	0	0	0	0	0	0	0	0			
2c			SE	-	13	0	0	0	0	0	0	0	RV2	RV2	RV2	LV1	0	0	0	0	0	0	0	0	0	0	0	0			
3a	Lord St (town centre)	Morris St - Cairns St	NW	P disabled	1	0	0	0	0	0	0	0	0	0	0	0	0	0	0	0	0	0	0	0	0	0	0	0			
3b				1/4P 9am-5pm Mon-Fri	1	0	0	0	0	0	0	0	0	0	0	0	0	0	0	0	0	0	0	0	0	0	0	0			
3c				-	25	LV1	0	0	0	LV1	0	0	0	0	0	0	0	0	0	0	0	0	0	0	0	0	0	0			
3d			SE	-	16	0	0	0	0	RV1	0	0	0	0	0	0	0	0	0	0	0	0	0	0	0	0	0	0			
4a	Lord St (GOR)	Morris St - McCue St	NW	Bus Zone	3	0	0	0	0	0	0	0	0	0	0	0	0	0	0	0	0	0	0	0	0	0	0	0			
4b				-	18	0	0	0	0	0	0	0	0	0	0	0	0	0	0	0	0	0	0	0	0	0	0	0			
4c			SE	-	23	LV1	0	0	0	0	0	0	0	0	0	0	0	0	0	0	0	0	0	0	0	0	0	0			
5	off-street carpark - recreation reserve		-		11	LV1	LV1	LV2	LV2	LV3	LV3	LV3	LV3	LV2	LV2	LV1	0	0	0	0	0	0	0	0	0	0	0	0	0		
6a	Morris St (GOR)	Lord St - Pitcher St	NE	-	23	LV1	LV1	0	RV1	0	0	0	0	0	0	0	0	0	0	0	0	0	0	0	0	0	0	0			
6b			SW	-	8	0	0	0	0	0	0	0	0	0	0	0	0	0	0	0	0	0	0	0	0	0	0	0			
6c				-	22	0	0	0	0	0	0	0	0	0	0	0	0	0	0	0	0	0	0	0	0	0	0	0			
7a	Morris St (VIS)	Lord St - Tregoe St	NE	P disabled	1	0	0	0	0	0	0	0	0	0	0	0	0	0	0	0	0	0	0	0	0	0	0	0			
7b				-	4	0	0	0	0	0	0	0	0	0	0	0	0	0	0	0	0	0	0	0	0	0	0	0			
7c			SW	-	5	0	0	0	0	0	0	0	0	0	0	0	0	0	0	0	0	0	0	0	0	0	0	0			
8a	off-street carpark - Morris St			P disabled	2	0	0	0	0	0	0	0	0	0	0	0	0	0	0	0	0	0	0	0	0	0	0	0			
8b				-	32	0	0	0	0	0	0	0	0	0	0	0	0	0	LV1	0	0	0	0	0	0	0	0	0			
9a	Tregoe St	Morris St - Cairns St	NW	-	39	0	0	0	0	0	0	0	0	0	0	0	0	0	0	0	0	0	0	0	0	0	0	0			
9b				-	2	0	0	0	0	0	0	0	0	0	0	B1	0	0	0	0	0	0	0	0	0	0	0	0			
9c				Bus Zone (P 5min)	1	0	0	0	0	0	0	0	0	B1	B1	B1	B1	0	0	0	0	0	0	0	0	0	0	0			
9d			SE	-	18	0	0	0	0	0	0	0	0	B2	0	0	0	0	0	0	0	B1	0	0	0	0	0	0			
10a	Cairns St (foreshore)	Lord St - Tregoe St	NE	P trucks & buses prohibited	10	0	0	0	0	0	RV1	0	LV2	RV1	RV2	LV1	RV2	LV1	RV1	RV4	RV5	RV3	0	0	0	0	0	0	0		
10b			SW	P disabled	2	0	0	0	0	0	0	0	0	0	0	0	0	0	0	0	0	0	0	0	0	0	0	0			
10c				-	29	0	0	0	0	0	0	0	0	0	0	0	0	0	0	0	0	0	0	0	0	RV2	RV1	RV1	0		
11a	Cairns St	Lord St - Hennessy St	NE	-	5	0	0	0	0	0	0	0	0	0	0	0	0	0	0	0	0	0	0	0	0	0	0	0			
11b			SW	Bus Zone	2	0	0	0	0	0	0	0	B2	B2	0	0	0	0	0	0	B1	0	0	0	0	0	B1	B1	0		
12a	Hennessy St	Morris St - Cairns St	NW	-	17	0	0	0	0	0	0	0	0	0	0	0	0	0	0	0	0	0	0	0	RV1	RV1	RV1	RV1	RV1		
12b			SE	-	17	0	0	0	0	0	0	0	0	0	0	0	0	0	0	0	0	0	0	0	0	0	0	0	0		
Total					414	5	3	4	4	6	6	3	9	10	8	7	2	5	5	4	0	0	4	2	2	2	2	1	1		
Central Area Total					304																										

Notes: (i) Public toilets construction occurring at recreation reserve (area ID-5).

Legend: B = bus BT = boat trailer RV = motorhome / car+caravan LV = other



Saturday		21-Dec-19		(weather: sunny, max. of 18)																	
ID	Location	Segment	Side	Restrictions	Supply	Demands															
						9:30	10:00	10:30	11:00	11:30	12:00	12:30	13:00	13:30	14:00	14:30	15:00	15:30	16:00	16:30	17:00
1a	off-street carpark - end of Lord St		-		14	0	0	0	0	0	1		1	1	0	0	0	0	0	0	0
1b				P boat trailers only	12	1	1	1	1	1	2		2	3	4	3	3	0	1	0	0
1c				P boat trailers only 3am-11am	8	0	0	0	0	0	0		0	0	0	0	0	0	0	0	0
2a	Lord St (foreshore)	Caims St - end	NW	P disabled	2	0	0	0	0	0	0		0	0	0	0	0	1	1	0	0
2b				-	28	9	9	11	9	8	17		17	20	23	20	17	14	13	14	12
2c			SE	-	13	2	3	6	5	3	5		8	9	7	6	2	3	1	1	2
3a	Lord St (town centre)	Morris St - Caims St	NW	P disabled	1	0	0	0	0	0	0		1	0	0	1	0	0	0	0	0
3b				1/4P 9am-5pm Mon-Fri	1	1	0	0	0	0	0		1	1	0	1	1	1	1	1	1
3c				-	25	21	26	18	16	15	18		27	24	22	19	23	20	22	18	21
3d			SE	-	16	14	13	13	9	8	11		15	16	12	14	15	11	11	13	14
4a	Lord St (GOR)	Morris St - McCue St	NW	Bus Zone	3	0	0	0	0	0	1		0	0	0	0	0	0	0	0	0
4b				-	18	0	0	0	0	0	0		0	0	0	0	0	0	0	0	0
4c			SE	-	23	0	0	0	0	0	0		0	0	0	0	1	1	0	0	0
5	off-street carpark - recreation reserve			-	11	1	1	3	3	7	7		2	2	2	1	1	3	2	1	2
6a	Morris St (GOR)	Lord St - Pitcher St	NE	-	23	1	0	0	1	0	0		4	6	6	5	3	3	4	0	1
6b			SW	-	8	0	0	0	0	0	1		5	7	6	6	4	2	3	6	5
6c				-	22	0	0	0	0	0	0		0	0	3	2	0	0	0	0	0
7a	Morris St (VIS)	Lord St - Tregea St	NE	P disabled	1	0	0	0	0	0	0		0	0	0	0	0	0	0	0	0
7b				-	4	0	1	1	1	0	0		0	0	0	0	1	0	0	1	0
7c			SW	-	5	0	0	0	1	0	0		0	0	0	0	0	0	0	0	0
8a	off-street carpark - Morris St			P disabled	2	0	0	0	0	0	0		0	0	0	0	0	0	0	0	0
8b				-	32	7	11	9	6	7	6		5	5	7	4	4	3	4	2	2
9a	Tregea St	Morris St - Caims St	NW	-	39	3	1	1	2	2	5		5	8	9	9	4	5	5	8	5
9b				-	2	0	0	0	0	0	0		0	0	0	0	0	0	0	0	0
9c				Bus Zone (P 5min)	1	0	1	0	0	1	0		0	0	0	0	0	0	0	0	0
9d			SE	-	18	3	4	6	7	10	8		10	10	13	12	10	9	8	8	4
10a	Caims St (foreshore)	Lord St - Tregea St	NE	P trucks & buses prohibited	10	0	3	5	3	1	2		6	9	7	8	5	5	4	3	4
10b			SW	P disabled	2	0	0	0	0	0	0		0	0	0	0	0	0	0	0	0
10c				-	29	11	17	13	17	13	20		29	28	23	22	22	23	24	22	17
11a	Caims St	Lord St - Hennessy St	NE	-	5	2	1	1	1	1	1		3	5	3	2	3	2	2	1	0
11b			SW	Bus Zone	2	0	1	0	0	0	1		3	1	0	1	1	0	0	0	1
12a	Hennessy St	Morris St - Caims St	NW	-	17	6	6	5	5	3	3		4	4	4	4	5	4	4	4	4
12b			SE	-	17	0	0	0	0	1	1		0	0	0	0	0	0	0	0	0
Total					414	82	99	93	87	81	110		148	159	151	140	125	110	110	103	95
Central Area Total					304	76	92	88	82	77	103		136	147	138	127	114	103	103	93	85

Notes:

Legend: 0-50% 51-70% 71-85% 86-100% >100% occupancy rate



Sunday 22-Dec-19 (weather: sunny, max. of 18)																					
ID	Location	Segment	Side	Restrictions	Supply	Demands															
						9:30	10:00	10:30	11:00	11:30	12:00	12:30	13:00	13:30	14:00	14:30	15:00	15:30	16:00	16:30	17:00
1a	off-street carpark - end of Lord St		-		14	0	0	0	1	0	0	0	3	6	7	9	9	6	2	0	0
1b				P boat trailers only	12	1	2	1	1	2	1	0	4	8	14	15	9	7	3	2	3
1c				P boat trailers only 3am-11am	8	1	1	2	1	1	0	0	0	0	0	0	0	0	0	0	0
2a	Lord St (foreshore)	Caims St - end	NW	P disabled	2	0	0	0	0	0	0	0	0	1	0	1	1	1	0	0	0
2b				-	28	10	12	16	14	15	17	27	28	27	28	28	27	20	20	18	19
2c			SE	-	13	1	2	3	4	4	7	9	12	12	10	11	11	10	9	10	4
3a	Lord St (town centre)	Morris St - Caims St	NW	P disabled	1	0	1	1	0	0	0	0	0	1	1	0	0	1	0	0	0
3b				1/4P 9am-5pm Mon-Fri	1	1	1	0	1	1	1	1	1	1	1	1	1	1	1	1	1
3c				-	25	17	24	22	22	15	15	25	25	25	25	23	24	24	21	22	22
3d			SE	-	16	14	15	13	13	12	13	15	15	16	16	16	16	16	13	14	12
4a	Lord St (GOR)	Morris St - McCue St	NW	Bus Zone	3	0	0	0	0	1	1	0	0	0	0	0	0	0	0	0	0
4b				-	18	0	0	0	0	0	1	0	0	0	0	0	1	0	0	0	0
4c			SE	-	23	0	1	2	0	0	1	0	0	1	1	1	0	0	0	1	1
5	off-street carpark - recreation reserve			-	11	1	2	2	4	3	3	4	5	4	3	5	5	3	5	2	1
6a	Morris St (GOR)	Lord St - Pitcher St	NE	-	23	0	2	1	0	2	0	1	2	3	4	1	5	4	1	0	1
6b			SW	-	8	1	2	1	0	1	3	4	5	5	6	3	5	2	1	1	6
6c				-	22	0	0	0	0	0	0	0	1	0	0	0	1	1	1	0	0
7a	Morris St (VIS)	Lord St - Tregea St	NE	P disabled	1	0	0	0	0	0	0	0	0	0	0	0	0	0	0	0	0
7b				-	4	0	1	0	0	0	1	2	2	3	0	0	0	0	0	2	2
7c			SW	-	5	0	0	0	1	0	0	0	0	0	0	0	0	0	0	0	0
8a	off-street carpark - Morris St			P disabled	2	0	0	1	1	1	1	1	1	0	0	0	0	0	1	1	1
8b				-	32	8	10	22	22	20	20	16	19	18	16	15	15	12	8	8	7
9a	Tregea St	Morris St - Caims St	NW	-	39	5	4	2	2	4	6	9	13	18	21	16	19	24	16	11	8
9b				-	2	0	0	0	0	0	0	0	0	1	1	1	0	0	0	0	0
9c				Bus Zone (P 5min)	1	0	0	0	0	0	0	0	0	1	1	0	1	0	0	0	1
9d			SE	-	18	5	6	7	7	6	7	8	8	11	12	13	11	10	10	9	9
10a	Caims St (foreshore)	Lord St - Tregea St	NE	P trucks & buses prohibited	10	5	6	6	10	11	9	9	10	10	9	9	10	10	10	8	7
10b			SW	P disabled	2	1	1	2	1	0	0	0	0	0	0	1	1	0	0	0	0
10c				-	29	19	23	19	22	25	29	29	29	29	29	29	29	29	28	24	24
11a	Caims St	Lord St - Hennessy St	NE	-	5	4	2	3	3	3	4	3	5	5	5	5	5	4	4	4	3
11b			SW	Bus Zone	2	0	0	0	0	0	1	2	2	1	1	1	0	0	0	1	0
12a	Hennessy St	Morris St - Caims St	NW	-	17	5	4	4	3	4	3	2	2	2	3	3	2	2	2	2	1
12b			SE	-	17	0	0	0	0	1	1	2	2	2	1	1	1	2	1	1	1
Total					414	99	122	130	133	132	145	169	194	211	215	208	209	189	157	142	134
Central Area Total					304	93	115	123	130	125	134	159	182	200	203	199	199	182	152	136	125

Notes:

Legend: 0-50% 51-70% 71-85% 86-100% >100% occupancy rate



Sunday		22-Dec-19		(weather: sunny, max. of 18)		Long Vehicle Demands																
ID	Location	Segment	Side	Restrictions	Supply	9:30	10:00	10:30	11:00	11:30	12:00	12:30	13:00	13:30	14:00	14:30	15:00	15:30	16:00	16:30	17:00	
1a	off-street carpark - end of Lord St		-		14	0	0	0	0	0	0	0	0	0	0	0	0	0	0	0	0	
1b				P boat trailers only	12	0	0	0	0	0	0	0	0	0	0	RV1	RV1	RV1	0	RV1	RV1	
1c				P boat trailers only 3am-11am	8	0	0	BT1	BT1	BT 1	0	0	0	0	0	0	0	0	0	0	0	
2a	Lord St (foreshore)	Caims St - end	NW	P disabled	2	0	0	0	0	0	0	0	0	0	0	0	0	0	0	0	0	
2b				-	28	0	0	0	0	0	0	0	0	0	0	0	0	0	0	0	0	
2c			SE	-	13	0	0	0	LV1	LV1	RV1	RV1	RV1	RV1	0	0	0	0	0	LV1	0	
3a	Lord St (town centre)	Morris St - Caims St	NW	P disabled	1	0	0	0	0	0	0	0	0	0	0	0	0	0	0	0	0	
3b				1/4P 9am-5pm Mon-Fri	1	0	0	0	0	0	0	0	0	0	0	0	0	0	0	0	0	
3c				-	25	0	0	0	0	0	0	0	0	0	0	0	0	0	0	0	0	
3d			SE	-	16	0	0	0	0	0	0	0	0	0	0	0	0	0	0	0	RV1	
4a	Lord St (GOR)	Morris St - McCue St	NW	Bus Zone	3	0	0	0	0	LV 1	LV1	0	0	0	0	0	0	0	0	0	0	
4b				-	18	0	0	0	0	0	0	0	0	0	0	0	0	0	0	0	0	
4c			SE	-	23	0	0	0	0	0	0	0	0	0	0	0	0	0	0	0	0	
5	off-street carpark - recreation reserve		-		11	0	0	0	0	0	0	LV1	LV1	0	0	0	0	0	0	0	0	
6a	Morris St (GOR)	Lord St - Pitcher St	NE	-	23	0	0	0	0	0	0	B 1	0	B1	B2	0	0	0	0	0	0	
6b			SW	-	8	0	0	0	0	0	0	0	0	0	0	0	0	0	0	0	0	
6c				-	22	0	0	0	0	0	0	0	0	0	0	0	B1	B1	B1	0	0	
7a	Morris St (VIS)	Lord St - Tregea St	NE	P disabled	1	0	0	0	0	0	0	0	0	0	0	0	0	0	0	0	0	
7b				-	4	0	LV1	0	0	0	0	0	0	0	0	0	0	0	0	0	0	
7c			SW	-	5	0	0	0	RV1	0	0	0	0	0	0	0	0	0	0	0	0	
8a	off-street carpark - Morris St			P disabled	2	0	0	0	0	0	0	0	0	0	0	0	0	0	0	0	0	
8b				-	32	0	0	0	0	0	0	0	0	0	0	RV1	RV1	RV1	0	0	0	
9a	Tregea St	Morris St - Caims St	NW	-	39	0	0	0	0	0	0	0	0	0	0	0	0	0	0	0	0	
9b				-	2	0	0	0	0	0	0	0	0	0	B1	0	0	0	0	0	0	
9c				Bus Zone (P 5min)	1	0	0	0	0	0	0	0	0	B1	B1	0	B1	0	0	0	B1	
9d			SE	-	18	0	0	LV 1	LV1	0	LV1	RV1	B1	0	0	0	0	0	LV1	0	0	
10a	Caims St (foreshore)	Lord St - Tregea St	NE	P trucks & buses prohibited	10	0	RV 1	0	0	0	0	RV1	RV1	0	0	RV1	0	0	0	0	LV1	
10b			SW	P disabled	2	0	0	0	0	0	0	0	0	0	0	0	0	0	0	0	0	
10c				-	29	0	0	0	0	0	0	0	0	0	0	0	0	0	0	0	0	
11a	Caims St	Lord St - Hennessy St	NE	-	5	0	0	0	0	B 1	0	0	0	0	0	0	0	0	0	0	0	
11b			SW	Bus Zone	2	0	0	0	0	0	B1	B2	B2	B1	B1	B1	0	0	0	0	0	
12a	Hennessy St	Morris St - Caims St	NW	-	17	0	0	0	0	0	0	0	0	0	0	0	0	0	0	0	0	
12b			SE	-	17	0	0	0	0	0	0	0	0	0	0	0	0	0	0	0	0	
Total					414	0	2	2	4	4	4	7	6	4	5	4	4	3	2	2	4	
Central Area Total					304																	

Notes:

Legend: B = bus BT = boat trailer RV = motorhome / car+caravan LV = other



Friday		27-Dec-19		(weather: sunny, max. of 23)																	
ID	Location	Segment	Side	Restrictions	Supply	Demands															
						9:30	10:00	10:30	11:00	11:30	12:00	12:30	13:00	13:30	14:00	14:30	15:00	15:30	16:00	16:30	17:00
1a	off-street carpark - end of Lord St		-		14	1	1	3	1	3	9	13	14	14	14	14	13	14	14	13	8
1b				P boat trailers only	12	0	4	6	3	5	17	22	24	24	24	24	23	24	24	22	14
1c				P boat trailers only 3am-11am	8	3	3	3	3	3	3	2	3	6	6	6	6	8	8	8	4
2a	Lord St (foreshore)	Caims St - end	NW	P disabled	2	0	0	0	0	0	0	2	1	2	1	1	1	1	1	1	
2b				-	28	9	18	18	17	27	28	28	28	28	28	27	28	28	28	25	
2c			SE	-	13	3	6	3	7	9	12	12	14	14	12	13	11	12	12	9	
3a	Lord St (town centre)	Morris St - Caims St	NW	P disabled	1	0	0	0	0	0	0	1	1	0	1	0	0	0	0	0	
3b				1/4P 9am-5pm Mon-Fri	1	1	1	1	0	1	0	1	1	1	1	1	1	1	1	0	
3c				-	25	20	25	25	22	25	25	26	25	26	25	26	24	25	26	22	
3d			SE	-	16	15	15	15	14	16	14	16	16	15	16	15	16	16	15	14	
4a	Lord St (GOR)	Morris St - McCue St	NW	Bus Zone	3	0	0	0	0	0	0	0	0	0	0	0	1	1	0	0	
4b				-	18	0	0	0	0	1	0	0	3	3	0	0	0	0	0	0	
4c			SE	-	23	0	0	0	0	0	0	0	0	0	1	1	1	1	2	0	
5	off-street carpark - recreation reserve			-	11	6	6	7	8	9	3	9	11	12	10	6	10	12	9	6	
6a	Morris St (GOR)	Lord St - Pitcher St	NE	-	23	0	0	0	1	4	6	6	10	9	12	11	14	8	9	4	
6b			SW	-	8	3	3	3	2	4	5	7	7	9	7	7	7	7	4	5	
6c				-	22	1	2	1	0	0	0	1	6	7	9	12	9	6	3	0	
7a	Morris St (VIS)	Lord St - Tregea St	NE	P disabled	1	0	0	0	0	0	0	0	1	1	0	0	0	0	0	0	
7b				-	4	1	0	4	1	3	3	3	4	3	3	4	3	4	3	1	
7c			SW	-	5	1	2	1	0	0	0	0	2	2	2	2	1	2	1	0	
8a	off-street carpark - Morris St			P disabled	2	0	0	0	0	0	0	0	1	1	1	1	1	0	0	0	
8b				-	32	15	13	11	12	12	20	22	38	44	44	49	48	37	39	36	31
9a	Tregea St	Morris St - Caims St	NW	-	39	19	17	19	17	26	35	39	39	39	39	39	38	39	38	34	
9b				-	2	0	0	0	0	0	0	1	2	2	2	0	0	0	0	0	
9c				Bus Zone (P 5min)	1	0	0	0	0	1	0	0	2	2	3	1	1	1	0	1	
9d			SE	-	18	13	14	13	14	16	15	15	15	15	15	19	18	17	17	15	
10a	Caims St (foreshore)	Lord St - Tregea St	NE	P trucks & buses prohibited	10	6	8	9	8	10	10	10	10	10	10	7	10	9	10	9	
10b			SW	P disabled	2	1	0	0	0	1	2	1	2	2	2	2	1	1	1	0	
10c				-	29	23	28	28	28	29	29	29	28	29	29	29	29	29	28	27	
11a	Caims St	Lord St - Hennessy St	NE	-	5	4	4	4	4	5	5	6	5	5	6	7	8	7	5	5	
11b			SW	Bus Zone	2	0	0	0	0	0	4	3	5	6	3	2	1	0	0	1	
12a	Hennessy St	Morris St - Caims St	NW	-	17	5	5	5	4	5	4	5	8	8	10	10	10	10	11	9	
12b			SE	-	17	1	2	2	2	1	1	2	3	4	7	7	4	3	3	2	
Total					414	151	177	181	168	216	250	282	329	343	343	347	337	325	315	294	247
Central Area Total					304	141	165	170	160	205	236	264	297	306	306	308	302	296	289	273	230

Notes:

Legend: 0-50% 51-70% 71-85% 86-100% >100% occupancy rate



Friday		27-Dec-19		(weather: sunny, max. of 23)		Long Vehicle Demands																
ID	Location	Segment	Side	Restrictions	Supply	9:30	10:00	10:30	11:00	11:30	12:00	12:30	13:00	13:30	14:00	14:30	15:00	15:30	16:00	16:30	17:00	
1a	off-street carpark - end of Lord St		-		14	0	0	0	0	0	0	0	0	0	0	0	0	0	0	0	0	0
1b				P boat trailers only	12	0	0	0	0	LV1	0	0	0	0	0	0	0	0	0	0	0	0
1c				P boat trailers only 3am-11am	8	BT1	BT1	BT1	BT1	BT1	BT1	0	0	0	0	0	0	RV1	RV1	RV1	RV1	0
2a	Lord St (foreshore)	Caims St - end	NW	P disabled	2	0	0	0	0	0	0	0	0	0	0	0	0	0	0	0	0	0
2b				-	28	0	0	0	0	0	0	0	0	0	0	0	0	0	0	0	0	0
2c			SE	-	13	0	0	0	RV1	0	0	0	0	0	0	0	0	0	0	0	0	0
3a	Lord St (town centre)	Morris St - Caims St	NW	P disabled	1	0	0	0	0	0	0	0	0	0	0	0	0	0	0	0	0	0
3b				1/4P 9am-5pm Mon-Fri	1	0	0	0	0	0	0	0	0	0	0	0	0	0	0	0	0	0
3c				-	25	0	0	0	0	0	0	0	0	0	0	0	0	0	0	0	0	0
3d			SE	-	16	0	0	0	0	0	0	0	0	0	0	0	0	0	0	0	0	0
4a	Lord St (GOR)	Morris St - McCue St	NW	Bus Zone	3	0	0	0	0	0	0	0	0	0	0	0	0	0	0	0	0	0
4b				-	18	0	0	0	0	0	0	0	0	0	0	0	0	0	0	0	0	0
4c			SE	-	23	0	0	0	0	0	0	0	0	0	B1	B1	LV1	LV1	LV1	0	0	0
5	off-street carpark - recreation reserve		-		11	0	0	0	0	0	0	0	0	0	0	0	0	0	0	0	0	0
6a	Morris St (GOR)	Lord St - Pitcher St	NE	-	23	0	0	0	0	0	B1	B1	B1	B1	0	0	0	0	0	0	0	0
6b			SW	-	8	0	0	0	0	0	0	0	0	0	0	0	0	0	0	0	0	0
6c				-	22	RV 1	RV2	RV1	0	0	0	0	0	0	0	0	0	0	0	0	0	0
7a	Morris St (VIS)	Lord St - Tregae St	NE	P disabled	1	0	0	0	0	0	0	0	0	0	0	0	0	0	0	0	0	0
7b				-	4	0	0	0	0	0	0	0	0	0	0	0	0	0	0	0	0	0
7c			SW	-	5	0	0	0	0	0	0	0	LV1	LV1	0	0	0	0	0	0	0	0
8a	off-street carpark - Morris St			P disabled	2	0	0	0	0	0	0	0	0	0	0	0	0	0	0	0	0	0
8b				-	32	0	0	0	0	RV1	0	0	0	0	0	0	0	0	0	0	0	0
9a	Tregae St	Morris St - Caims St	NW	-	39	0	0	0	0	0	0	0	0	0	0	0	0	0	0	0	0	0
9b				-	2	0	0	0	0	0	0	0	0	0	B2	0	0	0	0	0	B2	0
9c				Bus Zone (P 5min)	1	0	0	0	0	0	0	0	0	B2	B2	B1	B1	0	0	0	B1	B1
9d			SE	-	18	0	0	0	0	0	0	0	0	0	0	0	0	0	0	0	LV1	LV1
10a	Caims St (foreshore)	Lord St - Tregae St	NE	P trucks & buses prohibited	10	0	0	RV1	RV1	RV1	0	0	0	0	0	0	0	0	0	0	0	0
10b			SW	P disabled	2	0	0	0	0	0	0	0	0	0	0	0	0	0	0	0	0	0
10c				-	29	0	0	0	0	0	0	0	0	0	0	0	0	0	0	0	0	0
11a	Caims St	Lord St - Hennessy St	NE	-	5	0	0	0	0	0	0	0	0	0	0	0	0	0	0	0	0	0
11b			SW	Bus Zone	2	0	0	0	0	0	0	0	0	B2	B3	B2	0	0	0	0	0	B1
12a	Hennessy St	Morris St - Caims St	NW	-	17	0	0	0	0	0	0	0	0	0	0	0	0	0	0	0	0	0
12b			SE	-	17	0	0	0	0	0	0	0	0	0	0	0	0	0	0	0	0	0
Total					414	2	3	3	3	4	2	1	4	7	7	2	2	2	3	5	3	
Central Area Total					304																	

Notes:

Legend: B = bus BT = boat trailer RV = motorhome / car+caravan LV = other



Saturday		28-Dec-19		(weather: sunny, max. of 22)																	
ID	Location	Segment	Side	Restrictions	Supply	Demands															
						9:30	10:00	10:30	11:00	11:30	12:00	12:30	13:00	13:30	14:00	14:30	15:00	15:30	16:00	16:30	17:00
1a	off-street carpark - end of Lord St		-		14	1	1	2	2	10	14	14	14	13	14	14	14	13	14	11	8
1b				P boat trailers only	12	4	5	5	5	14	23	22	23	23	24	24	24	24	24	23	19
1c				P boat trailers only 3am-11am	8	1	1	1	1	3	2	3	5	8	9	6	7	5	4	3	4
2a	Lord St (foreshore)	Caims St - end	NW	P disabled	2	0	0	0	0	2	2	2	2	2	2	2	2	2	2	2	1
2b				-	28	7	11	24	28	28	28	28	29	28	28	28	28	28	28	27	26
2c			SE	-	13	7	5	8	11	13	12	15	14	16	14	13	11	13	12	13	12
3a	Lord St (town centre)	Morris St - Caims St	NW	P disabled	1	0	1	1	1	0	1	1	1	1	1	1	0	1	1	1	0
3b				1/4P 9am-5pm Mon-Fri	1	0	1	1	0	1	1	1	1	1	1	1	1	1	1	1	1
3c				-	25	22	23	25	25	25	29	26	29	28	27	27	27	27	25	26	26
3d			SE	-	16	15	15	15	15	16	16	16	16	16	16	16	16	16	12	15	16
4a	Lord St (GOR)	Morris St - McCue St	NW	Bus Zone	3	0	0	0	0	0	0	0	3	3	3	3	2	1	0	0	1
4b				-	18	0	0	0	1	0	0	2	5	2	6	5	3	3	6	5	2
4c			SE	-	23	0	3	2	2	0	1	0	11	11	13	10	9	4	9	4	3
5	off-street carpark - recreation reserve			-	11	3	5	2	6	6	6	10	13	10	11	11	7	7	10	8	8
6a	Morris St (GOR)	Lord St - Pitcher St	NE	-	23	0	0	2	1	3	4	12	10	11	9	15	18	13	14	14	6
6b			SW	-	8	4	4	4	5	7	8	9	8	9	8	8	8	8	8	8	7
6c				-	22	0	0	0	0	0	0	9	9	10	17	17	12	10	9	9	5
7a	Morris St (VIS)	Lord St - Tregea St	NE	P disabled	1	0	0	0	0	0	0	0	1	1	1	1	1	1	1	1	1
7b				-	4	0	2	2	1	1	3	3	4	4	4	3	4	4	3	4	2
7c			SW	-	5	0	1	0	1	0	0	4	4	4	6	6	4	6	4	4	2
8a	off-street carpark - Morris St			P disabled	2	0	0	1	0	0	0	1	1	1	1	1	1	1	1	0	0
8b				-	32	22	22	22	27	31	42	51	60	69	70	67	63	60	55	50	44
9a	Tregea St	Morris St - Caims St	NW	-	39	16	15	19	29	39	39	39	40	40	40	40	40	39	38	39	31
9b				-	2	0	0	1	0	0	0	1	2	0	1	1	2	1	1	0	
9c				Bus Zone (P 5min)	1	0	0	0	0	0	0	2	4	2	2	1	1	2	1	0	1
9d			SE	-	18	14	16	15	15	15	19	21	21	22	21	20	20	20	20	19	16
10a	Caims St (foreshore)	Lord St - Tregea St	NE	P trucks & buses prohibited	10	8	9	8	8	10	10	10	10	10	11	10	10	10	9	10	10
10b			SW	P disabled	2	0	0	1	1	0	2	2	2	2	1	2	2	2	2	2	2
10c				-	29	28	29	28	29	29	29	29	29	29	29	29	28	29	28	29	28
11a	Caims St	Lord St - Hennessy St	NE	-	5	3	4	4	4	4	6	6	8	6	6	7	5	6	5	5	5
11b			SW	Bus Zone	2	0	0	0	1	1	0	3	3	2	2	1	0	0	0	2	2
12a	Hennessy St	Morris St - Caims St	NW	-	17	4	6	4	5	7	9	10	10	12	9	11	10	12	11	7	7
12b			SE	-	17	2	2	1	2	2	4	7	9	11	10	9	5	5	7	6	4
Total					414	161	181	198	226	267	310	359	401	407	417	410	384	375	365	349	300
Central Area Total					304	151	166	187	210	250	288	319	343	347	349	346	335	332	315	308	269

Notes:

Legend: 0-50% 51-70% 71-85% 86-100% >100% occupancy rate



Saturday		28-Dec-19		(weather: sunny, max. of 22)																	
ID	Location	Segment	Side	Restrictions	Supply	Long Vehicle Demands															
						9:30	10:00	10:30	11:00	11:30	12:00	12:30	13:00	13:30	14:00	14:30	15:00	15:30	16:00	16:30	17:00
1a	off-street carpark - end of Lord St			-	14	0	0	BT1	0	0	0	0	0	0	0	0	0	0	0	0	0
1b				P boat trailers only	12	BT1	BT1	BT1	BT1	BT1	BT1	BT1	BT1	0	0	0	0	0	0	0	
1c				P boat trailers only 3am-11am	8	BT1	BT1	BT1	BT1	BT1	BT1	RV1	RV1	0	0	0	0	BT1	BT2	BT3	
2a	Lord St (foreshore)	Caims St - end	NW	P disabled	2	0	0	0	0	0	0	0	0	0	0	0	0	0	0	0	
2b				-	28	0	0	0	0	0	0	0	0	0	0	0	0	0	0	0	
2c				SE -	13	0	0	0	RV1	0	0	0	0	0	0	RV1	0	0	0	0	
3a	Lord St (town centre)	Morris St - Caims St	NW	P disabled	1	0	0	0	0	0	0	0	0	0	0	0	0	0	0	0	
3b				1/4P 9am-5pm Mon-Fri	1	0	0	0	0	0	0	0	0	0	0	0	0	0	0	0	
3c				-	25	0	0	0	0	0	0	0	0	0	0	0	0	0	0	0	
3d				SE -	16	0	0	0	0	0	0	0	0	0	0	0	0	0	0	RV1	
4a	Lord St (GOR)	Morris St - McCue St	NW	Bus Zone	3	0	0	0	0	0	0	0	B1	B1	0	0	0	B1	0	RV1	
4b				-	18	0	0	0	LV1	0	0	RV1	RV1	0	0	0	0	0	0	0	
4c				SE -	23	0	0	0	RV1	0	0	0	RV2	RV1	0	0	0	0	0	0	
5	off-street carpark - recreation reserve			-	11	0	0	0	0	0	0	0	0	0	0	0	0	0	0	0	
6a	Morris St (GOR)	Lord St - Pitcher St	NE	-	23	0	0	0	0	0	0	B1	B1	B2	B1	B1	0	B1	B1	0	
6b				SW -	8	0	0	0	0	0	0	0	0	0	0	0	0	0	0	B1	
6c				-	22	0	0	0	0	0	0	RV1	RV3	LV1	RV1	RV1	0	0	0	0	
7a	Morris St (VIS)	Lord St - Tregea St	NE	P disabled	1	0	0	0	0	0	0	0	0	0	0	0	0	0	0	0	
7b				-	4	0	0	0	0	0	0	0	0	0	0	0	0	0	0	0	
7c				SW -	5	0	0	0	0	0	0	0	0	0	0	0	0	0	0	0	
8a	off-street carpark - Morris St			P disabled	2	0	0	0	0	0	0	0	0	0	0	0	0	0	0	0	
8b				-	32	0	0	0	0	0	RV2	RV2	0	0	0	0	0	0	0	0	
9a	Tregea St	Morris St - Caims St	NW	-	39	0	0	0	0	0	0	0	0	0	0	0	0	0	0	0	
9b				-	2	0	0	LV1	0	0	0	B1	B2	0	B1	B1	B1	B2	B1	0	
9c				Bus Zone (P 5min)	1	0	0	0	0	0	0	0	0	0	0	0	0	0	0	B1	
9d				SE -	18	0	0	0	0	0	0	0	0	0	0	0	0	0	0	0	
10a	Caims St (foreshore)	Lord St - Tregea St	NE	P trucks & buses prohibited	10	0	0	0	0	0	0	0	0	0	0	0	0	0	0	0	
10b				SW P disabled	2	0	0	0	0	0	0	0	0	0	0	0	0	0	0	0	
10c				-	29	0	0	0	0	0	0	0	0	0	0	0	0	0	0	0	
11a	Caims St	Lord St - Hennessy St	NE	-	5	0	0	0	0	0	0	0	0	0	0	0	0	0	0	0	
11b				SW Bus Zone	2	0	0	0	LV1	0	0	B3	B3	RV1	B1	B1	0	0	0	B2	
12a	Hennessy St	Morris St - Caims St	NW	-	17	0	0	0	0	0	0	0	0	0	0	0	0	0	0	0	
12b				SE -	17	0	0	0	0	0	0	0	0	0	0	0	0	0	0	0	
Total					414	2	2	4	6	2	4	11	15	7	4	5	1	4	3	3	9
Central Area Total					304																

Notes:

Legend: B = bus BT = boat trailer RV = motorhome / car+caravan LV = other



Friday		03-Jan-20		(weather: sunny, max. of 24)																	
ID	Location	Segment	Side	Restrictions	Supply	Demands															
						9:30	10:00	10:30	11:00	11:30	12:00	12:30	13:00	13:30	14:00	14:30	15:00	15:30	16:00	16:30	17:00
1a	off-street carpark - end of Lord St		-		14	2	3	4	8	10	8	10	13	14	14	14	14	14	11	10	8
1b				P boat trailers only	12	8	8	8	10	10	17	21	20	20	21	22	23	24	21	17	13
1c				P boat trailers only 3am-11am	8	4	5	6	6	4	2	3	4	5	9	9	8	8	8	6	3
2a	Lord St (foreshore)	Caims St - end	NW	P disabled	2	0	0	0	0	0	1	2	2	2	0	0	0	1	2	2	2
2b				-	28	14	22	24	29	29	30	30	30	30	30	30	30	30	30	28	30
2c			SE	-	13	8	10	12	12	13	13	13	13	13	13	13	13	13	13	12	15
3a	Lord St (town centre)	Morris St - Caims St	NW	P disabled	1	1	1	1	1	0	0	0	0	0	0	0	0	1	0	1	
3b				1/4P 9am-5pm Mon-Fri	1	1	1	1	1	1	1	1	1	1	1	1	1	1	1	1	1
3c				-	25	14	26	22	23	25	26	26	25	26	28	28	29	28	24	23	26
3d			SE	-	16	8	16	16	15	15	16	16	17	16	16	16	16	16	14	15	
4a	Lord St (GOR)	Morris St - McCue St	NW	Bus Zone	3	0	0	0	0	0	0	0	1	1	1	0	5	4	3	2	2
4b				-	18	0	0	0	0	0	0	1	3	4	6	7	6	7	3	3	2
4c			SE	-	23	0	0	0	3	2	3	1	6	10	6	5	5	7	4	2	2
5	off-street carpark - recreation reserve			-	11	12	10	9	10	11	8	8	7	3	9	8	6	9	5	2	3
6a	Morris St (GOR)	Lord St - Pitcher St	NE	-	23	2	4	6	6	3	2	4	8	13	17	13	13	14	8	7	7
6b			SW	-	8	2	4	5	2	2	4	8	8	7	8	8	7	8	9	6	4
6c				-	22	0	0	0	0	0	0	1	10	12	12	9	8	9	7	6	3
7a	Morris St (VIS)	Lord St - Tregea St	NE	P disabled	1	0	0	0	0	0	0	0	0	0	0	0	0	0	0	0	0
7b				-	4	1	1	2	2	2	3	4	4	4	4	4	4	3	4	4	3
7c			SW	-	5	0	0	0	0	0	0	0	1	4	4	4	5	4	4	2	1
8a	off-street carpark - Morris St			P disabled	2	0	0	0	0	0	0	0	0	0	0	0	0	0	0	0	0
8b				-	32	30	31	27	28	33	39	51	68	71	72	67	65	67	59	52	46
9a	Tregea St	Morris St - Caims St	NW	-	39	19	19	28	38	38	39	39	39	40	40	40	40	39	39	35	36
9b				-	2	0	0	0	0	0	0	1	1	1	1	0	0	0	0	0	0
9c				Bus Zone (P 5min)	1	0	0	0	0	0	0	0	2	1	1	1	1	1	0	0	0
9d			SE	-	18	11	12	16	17	17	16	19	18	20	21	20	20	21	19	19	18
10a	Caims St (foreshore)	Lord St - Tregea St	NE	P trucks & buses prohibited	10	10	7	10	9	11	10	10	10	10	10	10	10	10	10	10	8
10b			SW	P disabled	2	0	0	1	0	1	1	2	2	2	2	1	1	1	1	0	0
10c				-	29	26	29	29	29	29	29	29	29	29	29	29	29	29	29	29	27
11a	Caims St	Lord St - Hennessy St	NE	-	5	3	4	4	5	6	4	5	6	5	5	5	5	5	5	5	5
11b			SW	Bus Zone	2	2	1	0	0	0	1	3	4	2	4	4	2	1	0	0	2
12a	Hennessy St	Morris St - Caims St	NW	-	17	5	5	4	2	2	6	8	9	7	9	9	10	10	8	8	8
12b			SE	-	17	0	0	1	1	1	1	1	5	8	7	3	4	4	2	2	2
Total					414	183	219	236	257	265	276	315	365	383	398	381	379	388	350	308	293
Central Area Total					304	174	209	226	249	258	265	294	320	330	347	336	333	338	310	279	268

Notes:

Legend: 0-50% 51-70% 71-85% 86-100% >100% occupancy rate



Friday		03-Jan-20		(weather: sunny, max. of 24)																	
ID	Location	Segment	Side	Restrictions	Supply	Long Vehicle Demands															
						9:30	10:00	10:30	11:00	11:30	12:00	12:30	13:00	13:30	14:00	14:30	15:00	15:30	16:00	16:30	17:00
1a	off-street carpark - end of Lord St		-		14	0	LV1	LV1	LV1	LV1	LV1	LV1	0	0	0	0	0	0	0	0	0
1b				P boat trailers only	12	BT3	BT3	BT4	BT5	BT4	BT5	BT5	BT4	BT4	BT3	BT2	0	0	0	0	0
1c				P boat trailers only 3am-11am	8	BT4	BT5	BT5 RV1	BT5 RV1	BT3 RV1	BT2	BT2	BT2	BT2	BT2	BT1	BT1	BT3	BT3	BT3	BT2
2a	Lord St (foreshore)	Caims St - end	NW	P disabled	2	0	0	0	0	0	0	0	0	0	0	0	0	0	0	0	0
2b				-	28	0	0	0	0	0	0	0	0	0	0	0	0	0	0	0	0
2c			SE	-	13	0	0	0	0	0	0	0	0	0	0	0	0	0	0	0	0
3a	Lord St (town centre)	Morris St - Caims St	NW	P disabled	1	0	0	0	0	0	0	0	0	0	0	0	0	0	0	0	0
3b				1/4P 9am-5pm Mon-Fri	1	0	0	0	0	0	0	0	0	0	0	0	0	0	0	0	0
3c				-	25	0	0	0	0	0	0	0	0	0	0	0	0	0	0	0	0
3d			SE	-	16	0	0	0	0	0	0	0	0	0	0	0	0	0	0	0	0
4a	Lord St (GOR)	Morris St - McCue St	NW	Bus Zone	3	0	0	0	0	0	0	0	B1	B1	B1	0	LV1	0	0	0	0
4b				-	18	0	0	0	0	0	0	0	RV3	RV4	RV3	RV3	RV3	RV2	RV1	0	0
4c			SE	-	23	0	0	0	RV3	RV2	RV3	RV1	RV2	RV1	RV3	RV3	RV1	RV2	RV1	0	0
5	off-street carpark - recreation reserve			-	11	0	0	0	0	0	0	0	0	0	0	0	0	0	0	0	0
6a	Morris St (GOR)	Lord St - Pitcher St	NE	-	23	0	0	0	0	0	RV2	0	0	LV1	LV1	0	0	RV1	RV1	0	RV2
6b			SW	-	8	0	0	0	0	0	0	0	0	0	0	0	0	0	0	0	0
6c				-	22	0	0	0	0	0	0	0	0	0	0	LV1	LV1	0	0	0	RV1
7a	Morris St (VIS)	Lord St - Tregea St	NE	P disabled	1	0	0	0	0	0	0	0	0	0	0	0	0	0	0	0	0
7b				-	4	0	0	0	0	0	0	0	0	0	0	0	0	0	RV1	0	RV1
7c			SW	-	5	0	0	0	0	0	0	0	RV1	0	0	0	0	0	0	0	0
8a	off-street carpark - Morris St			P disabled	2	0	0	0	0	0	0	0	0	0	0	0	0	0	0	0	0
8b				-	32	0	0	0	0	RV1	RV1	RV1 LV2	LV1	LV1	0	0	0	0	0	0	0
9a	Tregea St	Morris St - Caims St	NW	-	39	0	0	0	0	0	0	0	0	0	0	0	0	0	0	0	0
9b				-	2	0	0	0	0	0	0	RV1	B1	B1	B1	0	0	0	0	0	0
9c				Bus Zone (P 5min)	1	0	0	0	0	0	0	0	B2	B1	B1	B1	B1	B1	0	0	0
9d			SE	-	18	0	0	RV1	RV2	RV2	RV1	RV1	0	0	0	0	0	0	0	0	0
10a	Caims St (foreshore)	Lord St - Tregea St	NE	P trucks & buses prohibited	10	0	0	0	0	0	0	0	0	0	0	0	0	0	0	0	0
10b			SW	P disabled	2	0	0	0	0	0	0	0	0	0	0	0	0	0	0	0	0
10c				-	29	0	0	0	0	0	0	0	0	0	0	0	0	0	0	0	0
11a	Caims St	Lord St - Hennessy St	NE	-	5	0	0	0	0	LV1	LV1	0	LV1	0	0	0	0	0	0	0	0
11b			SW	Bus Zone	2	0	0	0	0	0	0	0	B1	0	0	0	0	0	0	0	B2
12a	Hennessy St	Morris St - Caims St	NW	-	17	0	0	0	0	0	0	0	0	0	0	0	0	0	0	0	0
12b			SE	-	17	0	0	0	0	0	0	0	0	RV1	RV1	0	0	0	0	0	0
Total					414	7	9	12	17	15	16	14	19	14	16	11	8	9	7	3	7
Central Area Total					304																

Notes:

Legend: B = bus BT = boat trailer RV = motorhome / car+caravan LV = other



Friday		10-Jan-20		(weather: overcast & showers, max. of 24)																					
ID	Location	Segment	Side	Restrictions	Supply	Demands															15:00	15:30	16:00	16:30	17:00
						9:30	10:00	10:30	11:00	11:30	12:00	12:30	13:00	13:30	14:00	14:30									
1a	off-street carpark - end of Lord St		-		14	2	2	2	1	0	0	0	0	1	1	0		0	0	0	0				
1b				P boat trailers only	12	4	2	2	2	0	0	0	0	1	0	0		0	0	0	0				
1c				P boat trailers only 3am-11am	8	0	0	0	0	1	1	1	0	0	0	0		0	0	0	0				
2a	Lord St (foreshore)	Caims St - end	NW	P disabled	2	0	0	0	0	0	0	0	0	0	0	0		0	1	0	0				
2b				-	28	11	13	12	10	10	15	15	20	15	11	11		7	6	4	4				
2c			SE	-	13	9	9	7	7	6	7	7	11	10	7	6		7	6	6	6				
3a	Lord St (town centre)	Morris St - Caims St	NW	P disabled	1	0	0	0	0	0	1	0	1	0	0	0		0	0	0	0				
3b				1/4P 9am-5pm Mon-Fri	1	0	0	0	0	1	1	1	1	1	1	0		0	1	1	1				
3c				-	25	9	20	17	23	17	23	20	25	20	25	25		17	17	24	21				
3d			SE	-	16	13	13	15	18	10	15	13	16	16	16	14		15	9	11	11				
4a	Lord St (GOR)	Morris St - McCue St	NW	Bus Zone	3	0	0	0	0	0	0	0	0	0	0	0		0	0	0	0				
4b				-	18	0	0	0	0	0	0	0	0	0	0	0		0	0	0	0				
4c			SE	-	23	0	0	1	0	0	0	0	0	0	0	0		0	0	0	0				
5	off-street carpark - recreation reserve		-		11	5	2	3	2	0	0	2	3	3	3	1		1	4	3	1				
6a	Morris St (GOR)	Lord St - Pitcher St	NE	-	23	1	1	1	3	0	3	2	6	3	3	2		2	1	2	2				
6b			SW	-	8	2	2	3	4	2	3	4	5	5	2	3		1	5	5	7				
6c				-	22	0	0	0	0	0	0	1	2	0	0	0		0	0	0	0				
7a	Morris St (VIS)	Lord St - Tregea St	NE	P disabled	1	0	0	0	0	0	0	0	0	0	0	0		0	0	0	0				
7b				-	4	2	0	3	3	1	2	4	1	1	4	1		1	2	1	1				
7c			SW	-	5	0	0	0	0	0	0	0	0	1	1	0		0	0	1	0				
8a	off-street carpark - Morris St			P disabled	2	0	0	0	0	0	0	0	0	0	0	0		0	0	0	0				
8b				-	32	17	14	13	15	14	16	17	17	14	15	14		13	10	10	7				
9a	Tregea St	Morris St - Caims St	NW	-	39	15	13	13	13	10	9	9	9	15	11	9		8	10	14	15				
9b				-	2	0	0	0	0	0	0	0	1	1	0	1		0	0	0	1				
9c				Bus Zone (P 5min)	1	1	0	0	0	0	0	0	1	1	0	2		0	0	0	0				
9d			SE	-	18	10	9	9	8	7	8	8	7	8	7	6		6	7	9	9				
10a	Caims St (foreshore)	Lord St - Tregea St	NE	P trucks & buses prohibited	10	4	6	9	6	5	6	9	6	7	4	3		4	1	1	2				
10b			SW	P disabled	2	0	0	0	0	1	0	1	0	0	0	0		0	0	0	0				
10c				-	29	22	27	20	23	13	23	24	23	24	22	19		17	13	12	6				
11a	Caims St	Lord St - Hennessy St	NE	-	5	4	4	4	4	4	4	3	2	2	2	2		1	0	0	0				
11b			SW	Bus Zone	2	0	0	0	0	0	0	0	4	2	0	0		0	0	1	0				
12a	Hennessy St	Morris St - Caims St	NW	-	17	4	4	3	4	2	2	2	2	4	4	5		6	6	2	2				
12b			SE	-	17	2	2	3	2	2	2	2	3	3	2	2		3	1	3	3				
Total					414	137	143	140	148	106	141	145	166	158	141	126		109	100	110	99				
Central Area Total					304	129	135	130	138	100	134	136	150	144	133	116		99	88	99	87				

Notes: (i) Rain started approximately 11:00am.

Legend: 0-50% 51-70% 71-85% 86-100% >100% occupancy rate



Saturday		11-Jan-20		(weather: overcast & rain, max. of 16)		Long Vehicle Demands																									
ID	Location	Segment	Side	Restrictions	Supply	9:30	10:00	10:30	11:00	11:30	12:00	12:30	13:00	13:30	14:00	14:30	15:00	15:30	16:00	16:30	17:00	17:30	18:00	18:30	19:00	19:30	20:00	20:30	21:00		
1a	off-street carpark - end of Lord St		-		14	0	0	0	0	0	0	0	0	0	0	0	0	0	0	0	0	0	0	0	0	0	0	0	0		
1b				P boat trailers only	12	0	0	0	0	LV1	0	0	0	0	0	0	0	0	0	0	0	0	0	0	0	0	0	0	0		
1c				P boat trailers only 3am-11am	8	0	0	0	0	0	B1	0	0	0	0	0	0	0	0	0	0	0	0	0	0	0	0	0	0		
2a	Lord St (foreshore)	Caims St - end	NW	P disabled	2	0	0	0	0	0	0	0	0	0	0	0	0	0	0	0	0	0	0	0	0	0	0	0	0		
2b				-	28	0	0	0	0	0	0	0	0	0	0	0	0	0	0	0	0	0	0	0	0	0	0	0	0		
2c			SE	-	13	RV 1	RV2	RV2	RV4	RV2	RV3	RV2	RV1	RV1	RV1	RV2	RV3	RV1	RV1	RV2	RV3	RV3	RV3	RV2	RV2	RV2	RV2	RV2	RV1		
3a	Lord St (town centre)	Morris St - Caims St	NW	P disabled	1	0	0	0	0	0	0	0	0	0	0	0	0	0	0	0	0	0	0	0	0	0	0	0	0		
3b				1/4P 9am-5pm Mon-Fri	1	0	0	0	0	0	0	0	0	0	0	0	0	0	0	0	0	0	0	0	0	0	0	0	0		
3c				-	25	0	0	0	0	0	0	0	0	0	0	0	0	0	0	0	0	0	0	0	0	0	0	0	0		
3d			SE	-	16	0	0	0	0	0	0	0	0	0	0	0	0	0	RV1	0	0	0	0	0	0	0	0	0	0		
4a	Lord St (GOR)	Morris St - McCue St	NW	Bus Zone	3	0	0	0	0	0	0	0	0	0	0	0	0	0	0	0	0	0	0	0	0	0	0	0	0		
4b				-	18	0	0	0	0	0	0	0	0	0	0	0	0	0	0	0	0	0	0	0	0	0	0	0	0		
4c			SE	-	23	0	0	0	0	RV2	0	0	0	0	0	0	0	0	0	0	0	0	0	0	0	0	0	0	0		
5	off-street carpark - recreation reserve		-		11	0	0	0	0	0	LV1	LV1	0	0	0	0	0	0	0	0	0	0	0	0	0	0	0	0	0		
6a	Morris St (GOR)	Lord St - Pitcher St	NE	-	23	0	0	0	0	0	0	0	0	LV1	LV1	LV1	0	0	0	0	0	0	0	0	0	0	0	0	0		
6b			SW	-	8	0	0	0	0	0	0	0	0	0	0	0	0	0	0	0	0	0	0	0	0	0	0	0	0		
6c				-	22	0	0	0	0	0	0	LV1	LV1	LV1	0	0	LV1	0	0	0	0	0	0	0	0	0	0	0	0		
7a	Morris St (VIS)	Lord St - Tregoea St	NE	P disabled	1	0	0	0	0	0	0	0	0	0	0	0	0	0	0	0	0	0	0	0	0	0	0	0	0		
7b				-	4	0	0	0	0	0	0	0	0	0	0	0	0	0	0	0	0	0	0	0	0	0	0	0	0		
7c			SW	-	5	0	0	0	0	0	RV1	0	0	0	0	0	0	0	0	0	0	0	0	0	0	0	0	0	0		
8a	off-street carpark - Morris St			P disabled	2	0	0	0	0	0	0	0	0	0	0	0	0	0	0	0	0	0	0	0	0	0	0	0	0		
8b				-	32	0	0	0	0	LV1	0	0	0	LV1	0	0	0	0	0	0	0	0	0	0	0	0	0	0	0		
9a	Tregoea St	Morris St - Caims St	NW	-	39	0	0	0	0	0	0	0	0	0	0	0	0	0	0	0	0	0	0	0	0	0	0	0	0		
9b				-	2	0	0	0	0	0	0	0	0	0	0	0	0	0	0	0	0	B1	0	0	0	0	0	0	0		
9c				Bus Zone (P 5min)	1	0	0	0	0	0	B1	B1	0	B1	0	0	0	0	0	0	0	0	0	0	0	0	0	0	0		
9d			SE	-	18	0	0	0	0	0	0	0	0	RV1	0	RV3	LV2	0	0	0	0	0	0	0	0	0	0	0	0		
10a	Caims St (foreshore)	Lord St - Tregoea St	NE	P trucks & buses prohibited	10	0	0	0	0	0	0	0	0	0	0	0	0	0	0	0	0	0	0	0	0	0	RV1	0	0		
10b			SW	P disabled	2	0	0	0	0	0	0	0	0	0	0	0	0	0	0	0	0	0	0	0	0	0	0	0	0		
10c				-	29	0	0	0	0	0	0	0	0	0	0	0	0	0	0	0	0	0	0	0	0	0	0	0	0		
11a	Caims St	Lord St - Hennessy St	NE	-	5	0	0	0	0	0	RV1	RV1	RV1	RV1	RV1	RV1	0	0	0	0	RV1	0	0	0	0	0	0	0	0	0	
11b			SW	Bus Zone	2	0	B1	0	0	0	B2	0	B1	B1	B1	B1	0	0	0	0	0	0	0	0	0	0	0	0	0		
12a	Hennessy St	Morris St - Caims St	NW	-	17	0	0	0	0	0	0	0	0	0	0	0	0	0	0	0	0	0	0	0	0	0	0	0	0		
12b			SE	-	17	0	0	0	RV1	RV1	RV1	0	0	0	0	0	0	0	0	0	0	0	0	0	0	0	0	0	0		
Total					414	1	3	2	6	6	10	6	6	6	5	8	6	1	2	3	4	3	3	2	2	3	2	2	1		
Central Area Total					304																										

Notes:

Legend: B = bus BT = boat trailer RV = motorhome / car+caravan LV = other



Wednesday 15-Jan-20 (weather: overcast / smoke haze, max. of 21)																					
ID	Location	Segment	Side	Restrictions	Supply	Demands															
						9:30	10:00	10:30	11:00	11:30	12:00	12:30	13:00	13:30	14:00	14:30	15:00	15:30	16:00	16:30	17:00
1a	off-street carpark - end of Lord St		-		14	2	2	2	1	1	0	0	0	0	0	0	0	0	0	0	0
1b				P boat trailers only	12	1	1	0	1	1	0	1	4	0	1	1	2	1	0	0	1
1c				P boat trailers only 3am-11am	8	0	0	1	0	0	0	1	0	1	1	3	3	2	1	0	0
2a	Lord St (foreshore)	Caims St - end	NW	P disabled	2	0	0	0	0	0	0	0	0	1	0	0	0	0	0	0	0
2b				-	28	4	6	8	11	12	19	21	19	19	17	17	14	7	7	9	8
2c			SE	-	13	3	4	3	3	3	8	7	10	9	6	4	4	5	6	8	5
3a	Lord St (town centre)	Morris St - Caims St	NW	P disabled	1	0	0	0	0	0	1	1	1	1	1	1	1	1	0	0	0
3b				1/4P 9am-5pm Mon-Fri	1	0	0	0	0	1	1	1	0	1	1	1	0	1	1	1	1
3c				-	25	21	16	12	10	19	20	24	25	23	25	23	20	21	18	16	18
3d			SE	-	16	8	11	13	14	14	12	16	15	16	15	15	14	14	12	5	6
4a	Lord St (GOR)	Morris St - McCue St	NW	Bus Zone	3	1	1	0	0	0	0	0	0	0	0	0	0	0	0	0	0
4b				-	18	0	0	0	0	0	0	0	0	0	0	0	0	0	0	0	0
4c			SE	-	23	0	0	0	0	0	0	0	0	0	0	0	0	0	0	0	0
5	off-street carpark - recreation reserve			-	11	5	5	4	3	3	4	4	3	1	3	3	4	2	3	3	1
6a	Morris St (GOR)	Lord St - Pitcher St	NE	-	23	0	0	0	2	0	1	3	6	3	2	4	3	2	3	1	2
6b			SW	-	8	2	1	0	1	0	0	4	4	2	2	3	4	4	4	4	4
6c				-	22	0	0	0	0	0	0	0	1	0	0	0	0	0	0	2	1
7a	Morris St (VIS)	Lord St - Tregea St	NE	P disabled	1	0	0	0	0	0	0	0	0	0	0	0	0	0	0	0	0
7b				-	4	0	0	0	2	1	0	3	1	1	0	1	0	2	1	0	1
7c			SW	-	5	0	0	0	0	0	0	0	0	0	0	0	0	0	0	0	0
8a	off-street carpark - Morris St			P disabled	2	0	0	0	0	0	0	0	0	0	0	0	0	0	0	0	0
8b				-	32	13	12	12	12	13	14	10	16	14	13	14	13	13	12	12	9
9a	Tregea St	Morris St - Caims St	NW	-	39	9	8	9	9	8	8	7	9	8	10	8	7	6	5	6	6
9b				-	2	0	0	0	0	0	0	0	1	0	0	0	1	0	0	0	0
9c				Bus Zone (P 5min)	1	0	0	0	0	0	0	0	1	1	1	0	0	0	0	0	0
9d			SE	-	18	4	5	6	5	6	6	4	8	7	5	5	3	4	3	5	7
10a	Caims St (foreshore)	Lord St - Tregea St	NE	P trucks & buses prohibited	10	1	3	3	6	4	6	7	8	9	7	7	3	6	3	3	4
10b			SW	P disabled	2	0	0	0	0	0	0	0	0	0	0	0	0	0	0	0	0
10c				-	29	8	14	18	23	24	26	29	27	29	29	23	25	19	18	20	17
11a	Caims St	Lord St - Hennessy St	NE	-	5	4	3	4	4	4	3	4	4	4	3	3	4	3	2	1	0
11b			SW	Bus Zone	2	0	0	0	0	0	0	0	0	0	0	0	0	0	0	1	0
12a	Hennessy St	Morris St - Caims St	NW	-	17	2	4	4	4	3	3	3	3	4	5	5	5	5	5	5	5
12b			SE	-	17	1	1	1	1	1	1	0	1	1	1	1	1	1	1	1	1
Total					414	89	97	100	112	118	133	150	167	155	148	142	131	119	105	103	97
Central Area Total					304	83	90	95	106	114	129	143	158	148	140	133	121	109	95	90	86

Notes:

Legend: 0-50% 51-70% 71-85% 86-100% >100% occupancy rate



Wednesday 15-Jan-20 (weather: overcast / smoke haze, max. of 21)																						
ID	Location	Segment	Side	Restrictions	Supply	Long Vehicle Demands																
						9:30	10:00	10:30	11:00	11:30	12:00	12:30	13:00	13:30	14:00	14:30	15:00	15:30	16:00	16:30	17:00	
1a	off-street carpark - end of Lord St			-	14	0	0	0	0	0	0	0	0	0	0	0	0	0	0	0	0	
1b				P boat trailers only	12	0	0	0	0	0	0	0	LV1	0	0	0	0	0	0	0	0	
1c				P boat trailers only 3am-11am	8	0	0	LV1	0	0	0	0	0	LV1	0	LV2	LV2	LV1	LV1	0	0	
2a	Lord St (foreshore)	Caims St - end	NW	P disabled	2	0	0	0	0	0	0	0	0	0	0	0	0	0	0	0	0	
2b				-	28	0	0	0	0	0	0	0	0	0	0	0	0	0	0	0	0	
2c				SE -	13	0	LV1	0	0	0	0	0	0	0	0	0	0	0	B1	B1	B1	RV1
3a	Lord St (town centre)	Morris St - Caims St	NW	P disabled	1	0	0	0	0	0	0	0	0	0	0	0	0	0	0	0	0	
3b				1/4P 9am-5pm Mon-Fri	1	0	0	0	0	0	0	0	0	0	0	0	0	0	0	0	0	
3c				-	25	0	0	0	0	0	0	0	LV1	0	0	0	0	0	0	0	0	
3d				SE -	16	LV1	0	0	0	0	0	0	0	0	0	0	0	0	0	0	0	
4a	Lord St (GOR)	Morris St - McCue St	NW	Bus Zone	3	RV1	RV1	0	0	0	0	0	0	0	0	0	0	0	0	0	0	
4b				-	18	0	0	0	0	0	0	0	0	0	0	0	0	0	0	0	0	
4c				SE -	23	0	0	0	0	0	0	0	0	0	0	0	0	0	0	0	0	
5	off-street carpark - recreation reserve			-	11	0	0	0	0	0	0	0	LV1	0	0	0	0	0	0	0	0	
6a	Morris St (GOR)	Lord St - Pitcher St	NE	-	23	0	0	0	0	0	0	0	LV1	LV1	0	B1	0	0	0	0	LV1	
6b				SW -	8	0	0	0	0	0	0	0	0	0	0	0	0	0	0	0	0	
6c				-	22	0	0	0	0	0	0	0	0	RV1	0	0	0	0	0	0	0	
7a	Morris St (VIS)	Lord St - Tregea St	NE	P disabled	1	0	0	0	0	0	0	0	0	0	0	0	0	0	0	0	0	
7b				-	4	0	0	0	0	0	0	0	RV2	0	0	0	0	0	RV1	0	0	
7c				SW -	5	0	0	0	0	0	0	0	0	0	0	0	0	0	0	0	0	
8a	off-street carpark - Morris St			P disabled	2	0	0	0	0	0	0	0	0	0	0	0	0	0	0	0	0	
8b				-	32	0	0	0	0	0	0	0	0	LV1	0	0	0	0	0	0	0	
9a	Tregea St	Morris St - Caims St	NW	-	39	0	0	0	0	0	0	0	0	0	LV1	LV1	0	0	0	0	0	
9b				-	2	0	0	0	0	0	0	0	0	LV1	0	0	0	B1	0	0	0	
9c				Bus Zone (P 5min)	1	0	0	0	0	0	0	0	0	B1	B1	B1	0	0	0	0	0	
9d				SE -	18	0	0	RV1	RV1	RV1	LV1	0	0	0	RV1	RV1	0	0	0	0	RV1	
10a	Caims St (foreshore)	Lord St - Tregea St	NE	P trucks & buses prohibited	10	0	LV1	0	LV1	RV1	RV2	RV3	0	RV1	RV1	0	0	0	0	0	0	
10b				SW P disabled	2	0	0	0	0	0	0	0	0	0	0	0	0	0	0	0	0	
10c				-	29	0	0	RV2	RV2	RV1	RV1	0	0	0	0	0	0	0	0	0	0	
11a	Caims St	Lord St - Hennessy St	NE	-	5	LV1	0	0	0	0	0	0	0	0	0	0	0	0	0	0	0	
11b				SW Bus Zone	2	0	0	0	0	0	0	0	0	0	0	0	0	0	0	B1	0	
12a	Hennessy St	Morris St - Caims St	NW	-	17	0	0	0	0	0	0	0	0	0	0	0	0	0	0	0	0	
12b				SE -	17	0	0	LV1	0	0	LV1	0	0	0	0	0	0	0	0	0	0	
Total					414	3	3	5	4	3	5	8	6	5	5	2	3	3	2	2	3	
Central Area Total					304																	

Notes:

Legend: B = bus BT = boat trailer RV = motorhome / car+caravan LV = other



Friday		17-Jan-20		(weather: overcast & showers, max. of 19)																	
ID	Location	Segment	Side	Restrictions	Supply	Demands															
						9:30	10:00	10:30	11:00	11:30	12:00	12:30	13:00	13:30	14:00	14:30	15:00	15:30	16:00	16:30	17:00
1a	off-street carpark - end of Lord St		-		14	0	0	0	0	0	0	0	0	0	0	0	0	0	0	0	0
1b				P boat trailers only	12	0	0	1	1	1	1	0	0	0	1	0	0	0	0	0	0
1c				P boat trailers only 3am-11am	8	0	0	0	0	0	0	0	0	0	0	0	0	0	0	0	0
2a	Lord St (foreshore)	Caims St - end	NW	P disabled	2	0	0	0	0	0	0	1	1	1	0	0	0	0	0	0	0
2b				-	28	5	7	7	4	5	8	5	9	15	17	18	20	19	9	9	8
2c			SE	-	13	5	7	7	5	5	5	3	7	7	5	7	7	7	5	5	5
3a	Lord St (town centre)	Morris St - Caims St	NW	P disabled	1	0	0	0	0	0	0	1	0	0	0	0	0	0	0	0	0
3b				1/4P 9am-5pm Mon-Fri	1	1	1	0	1	0	1	0	1	1	0	0	0	0	0	0	1
3c				-	25	15	20	16	18	20	19	22	28	18	17	21	18	18	18	21	17
3d			SE	-	16	13	12	11	13	10	16	15	16	14	14	16	15	15	12	14	12
4a	Lord St (GOR)	Morris St - McCue St	NW	Bus Zone	3	0	0	0	0	0	0	0	0	0	0	0	0	0	0	0	0
4b				-	18	0	0	0	0	0	0	0	0	0	0	0	0	0	0	1	0
4c			SE	-	23	0	0	0	0	0	0	0	0	0	0	0	0	0	0	0	0
5	off-street carpark - recreation reserve			-	11	5	5	5	5	5	2	3	2	1	3	5	4	3	3	3	1
6a	Morris St (GOR)	Lord St - Pitcher St	NE	-	23	0	0	0	0	1	2	2	3	3	3	5	4	0	3	2	1
6b			SW	-	8	1	1	2	2	3	5	7	7	7	8	7	5	5	4	5	4
6c				-	22	0	0	0	0	0	0	1	0	0	0	1	0	0	0	0	0
7a	Morris St (VIS)	Lord St - Tregea St	NE	P disabled	1	0	0	0	0	0	0	0	0	0	0	0	0	0	0	0	0
7b				-	4	1	1	1	0	0	0	2	0	0	1	2	0	1	1	0	1
7c			SW	-	5	0	0	0	0	0	0	0	0	0	0	0	0	0	0	0	0
8a	off-street carpark - Morris St			P disabled	2	0	0	0	0	0	0	0	0	0	0	0	0	0	0	0	0
8b				-	32	12	11	9	10	9	10	10	10	11	12	11	11	11	12	11	11
9a	Tregea St	Morris St - Caims St	NW	-	39	5	6	6	5	6	5	5	5	9	7	7	7	9	9	8	7
9b				-	2	0	0	0	0	0	0	0	0	0	2	0	0	0	0	1	0
9c				Bus Zone (P 5min)	1	0	0	1	0	1	0	0	0	0	1	0	0	1	0	0	0
9d			SE	-	18	6	7	6	6	4	9	8	7	7	5	6	5	4	5	4	4
10a	Caims St (foreshore)	Lord St - Tregea St	NE	P trucks & buses prohibited	10	3	4	4	4	4	3	3	8	6	7	8	8	5	3	4	3
10b			SW	P disabled	2	0	0	0	0	0	0	0	0	0	0	0	0	0	0	0	0
10c				-	29	17	17	13	12	11	9	11	25	25	25	24	25	19	18	16	15
11a	Caims St	Lord St - Hennessy St	NE	-	5	4	4	4	3	4	3	2	3	4	4	4	4	3	3	2	0
11b			SW	Bus Zone	2	0	0	0	0	0	0	0	0	1	1	0	0	0	0	0	0
12a	Hennessy St	Morris St - Caims St	NW	-	17	2	1	1	1	1	1	1	2	3	3	3	3	3	3	4	4
12b			SE	-	17	1	1	1	1	1	1	1	1	1	1	1	1	1	1	1	1
Total					414	96	105	95	91	91	100	103	135	134	137	146	137	124	109	111	95
Central Area Total					304	92	102	91	87	86	93	93	125	122	124	134	128	115	101	100	86

Notes: (i) At 11:00am & 11:30am bus parked in area ID-10c occupying 4 90 degree spaces.

Legend: 0-50% 51-70% 71-85% 86-100% >100% occupancy rate



Friday		17-Jan-20		(weather: overcast & showers, max. of 19)																	
ID	Location	Segment	Side	Restrictions	Supply	Long Vehicle Demands															
						9:30	10:00	10:30	11:00	11:30	12:00	12:30	13:00	13:30	14:00	14:30	15:00	15:30	16:00	16:30	17:00
1a	off-street carpark - end of Lord St			-	14	0	0	0	0	0	0	0	0	0	0	0	0	0	0	0	0
1b				P boat trailers only	12	0	0	0	0	0	0	0	0	0	0	0	0	0	0	0	0
1c				P boat trailers only 3am-11am	8	0	0	0	0	0	0	0	0	0	0	0	0	0	0	0	0
2a	Lord St (foreshore)	Caims St - end	NW	P disabled	2	0	0	0	0	0	0	0	0	0	0	0	0	0	0	0	0
2b				-	28	0	0	0	0	0	0	0	0	0	0	0	0	0	0	0	0
2c				SE -	13	0	0	0	0	0	0	RV1	RV2	RV2	LV2	LV1	LV1	LV1	0	0	0
3a	Lord St (town centre)	Morris St - Caims St	NW	P disabled	1	0	0	0	0	0	0	0	0	0	0	0	0	0	0	0	0
3b				1/4P 9am-5pm Mon-Fri	1	0	0	0	0	0	0	0	0	0	0	0	0	0	0	0	0
3c				-	25	0	0	0	0	0	0	0	0	0	0	0	0	0	0	0	0
3d				SE -	16	0	0	0	0	0	0	0	0	0	0	0	0	0	0	0	0
4a	Lord St (GOR)	Morris St - McCue St	NW	Bus Zone	3	0	0	0	0	0	0	0	0	0	0	0	0	0	0	0	0
4b				-	18	0	0	0	0	0	0	0	0	0	0	0	0	0	0	0	0
4c				SE -	23	0	0	0	0	0	0	0	0	0	0	0	0	0	0	0	0
5	off-street carpark - recreation reserve			-	11	0	0	0	0	0	0	0	0	0	0	0	0	0	0	0	0
6a	Morris St (GOR)	Lord St - Pitcher St	NE	-	23	0	0	0	0	0	0	LV1	LV1	RV1	RV2	0	0	0	0	0	0
6b				SW -	8	0	0	0	0	0	0	0	0	0	0	0	0	0	0	0	0
6c				-	22	0	0	0	0	0	0	0	0	0	0	0	0	0	0	0	0
7a	Morris St (VIS)	Lord St - Tregea St	NE	P disabled	1	0	0	0	0	0	0	0	0	0	0	0	0	0	0	0	0
7b				-	4	0	0	0	0	0	0	0	0	0	0	0	0	0	0	0	0
7c				SW -	5	0	0	0	0	0	0	0	0	0	0	0	0	0	0	0	0
8a	off-street carpark - Morris St			P disabled	2	0	0	0	0	0	0	0	0	0	0	0	0	0	0	0	0
8b				-	32	0	0	0	0	0	0	0	0	0	0	0	0	0	0	0	0
9a	Tregea St	Morris St - Caims St	NW	-	39	0	0	0	0	LV1	0	0	0	0	0	0	0	0	0	0	0
9b				-	2	0	0	0	0	0	0	0	0	0	B2	0	0	0	0	0	0
9c				Bus Zone (P 5min)	1	0	0	RV1	0	B1	0	0	0	0	B1	0	0	B1	0	0	0
9d				SE -	18	0	LV1	LV1	LV1	LV1	LV1	LV1	LV1	LV1	0	0	LV1	0	0	0	0
10a	Caims St (foreshore)	Lord St - Tregea St	NE	P trucks & buses prohibited	10	LV1	0	0	RV1	RV1	0	0	LV1	0	0	0	0	0	0	0	0
10b				SW P disabled	2	0	0	0	0	0	0	0	0	0	0	0	0	0	0	0	0
10c				-	29	0	0	0	B1	B1	0	0	RV1	0	0	0	0	0	0	0	0
11a	Caims St	Lord St - Hennessy St	NE	-	5	0	0	0	0	0	0	0	0	0	0	0	0	0	0	0	0
11b				SW Bus Zone	2	0	0	0	0	0	0	0	0	B1	B1	0	0	0	0	0	0
12a	Hennessy St	Morris St - Caims St	NW	-	17	0	0	0	0	0	0	0	0	0	0	0	0	0	0	0	0
12b				SE -	17	0	0	0	0	0	0	0	0	0	0	0	0	0	0	0	0
Total					414	1	1	2	3	5	1	3	6	5	7	1	2	2	0	0	0
Central Area Total					304																

Notes: (i) At 11:00am & 11:30am bus parked in area ID-10c occupying 4 90 degree spaces.

Legend: B = bus BT = boat trailer RV = motorhome / car+caravan LV = other



Thursday		23-Jan-20		(weather: rain, max. of 17)																			
ID	Location	Segment	Side	Restrictions	Supply	Demands																	
						9:30	10:00	10:30	11:00	11:30	12:00	12:30	13:00	13:30	14:00	14:30	15:00	15:30	16:00	16:30	17:00		
1a	off-street carpark - end of Lord St		-		14	2	1	0	0	0	0	0	0	1	0	0	0	0	0	0	0	0	0
1b				P boat trailers only	12	1	1	1	0	0	1	0	0	0	0	0	0	0	0	0	0	2	1
1c				P boat trailers only 3am-11am	8	2	3	2	2	1	1	0	1	1	0	0	0	0	0	0	0	1	1
2a	Lord St (foreshore)	Caims St - end	NW	P disabled	2	0	0	0	0	0	0	0	0	0	0	0	0	0	0	0	0	0	
2b				-	28	6	6	7	7	9	13	13	13	13	17	17	16	17			12	6	
2c			SE	-	13	3	3	3	3	3	4	4	8	6	10	10	8	6			2	1	
3a	Lord St (town centre)	Morris St - Caims St	NW	P disabled	1	0	1	1	0	0	0	0	0	0	0	0	0	0	0	0	1	0	
3b				1/4P 9am-5pm Mon-Fri	1	1	1	1	0	0	1	0	1	1	1	1	0	1			1	1	
3c				-	25	13	21	20	21	16	22	25	26	27	26	23	19	15			17	13	
3d			SE	-	16	16	11	11	13	10	11	16	15	16	13	14	14	15			9	7	
4a	Lord St (GOR)	Morris St - McCue St	NW	Bus Zone	3	0	0	0	0	0	0	0	0	0	0	0	0	0	0	0	0	0	
4b				-	18	0	0	0	0	0	0	0	0	0	0	0	0	0	0	0	0	0	
4c			SE	-	23	0	0	0	0	0	0	0	0	0	1	0	0	0			0	0	
5	off-street carpark - recreation reserve			-	11	0	1	2	2	2	3	1	1	1	1	2	1	2			2	0	
6a	Morris St (GOR)	Lord St - Pitcher St	NE	-	23	1	0	1	1	1	1	1	3	4	2	1	0	1			0	0	
6b			SW	-	8	5	3	4	4	5	2	6	7	7	6	6	4	4			3	1	
6c				-	22	2	0	0	0	0	0	0	0	0	0	0	0	0			0	0	
7a	Morris St (VIS)	Lord St - Tregea St	NE	P disabled	1	0	0	0	0	0	0	0	0	0	0	0	0	0			0	0	
7b				-	4	2	1	0	2	1	1	2	2	2	1	0	3	3			0	0	
7c			SW	-	5	0	0	0	0	0	0	0	0	0	0	0	0	0			0	0	
8a	off-street carpark - Morris St			P disabled	2	0	0	0	0	0	0	0	0	0	0	0	0	0			0	0	
8b				-	32	10	11	14	13	14	14	14	16	13	13	11	13	10			9	8	
9a	Tregea St	Morris St - Caims St	NW	-	39	7	7	9	8	7	4	4	4	5	5	6	4	3			5	4	
9b				-	2	0	0	1	0	0	0	0	0	0	0	0	0	0			0	0	
9c				Bus Zone (P 5min)	1	0	0	2	0	2	2	1	0	0	2	0	0	0			1	1	
9d			SE	-	18	8	11	9	10	10	9	6	10	8	6	5	6	6			7	8	
10a	Caims St (foreshore)	Lord St - Tregea St	NE	P trucks & buses prohibited	10	2	3	2	0	1	3	7	7	10	6	2	5	2			3	4	
10b			SW	P disabled	2	0	0	0	0	0	0	0	2	1	0	0	0	0			0	0	
10c				-	29	9	16	8	12	20	24	24	26	27	30	17	19	19			14	7	
11a	Caims St	Lord St - Hennessy St	NE	-	5	3	4	4	4	4	3	4	4	4	3	3	2	2			2	2	
11b			SW	Bus Zone	2	0	0	0	0	0	1	1	2	2	1	0	0	0			1	1	
12a	Hennessy St	Morris St - Caims St	NW	-	17	1	0	0	0	0	0	0	1	0	1	1	1	1			3	2	
12b			SE	-	17	1	1	0	0	0	0	0	0	0	0	1	1	1			0	0	
Total					414	95	106	102	102	106	120	129	149	149	145	119	116	108			95	68	
Central Area Total					304	86	102	98	98	101	117	122	139	140	136	112	110	102			88	64	

Notes:

Legend: 0-50% 51-70% 71-85% 86-100% >100% occupancy rate



Saturday		25-Jan-20		(weather: sunny, max. of 21)		Demands																							
ID	Location	Segment	Side	Restrictions	Supply	9:30	10:00	10:30	11:00	11:30	12:00	12:30	13:00	13:30	14:00	14:30	15:00	15:30	16:00	16:30	17:00	17:30	18:00	18:30	19:00	19:30	20:00	20:30	21:00
1a	off-street carpark - end of Lord St		-		14	2	0	0	0	0	0	3	3	2	4	2	1	2	2	1	1	1	3	2	1	1	2	4	3
1b				P boat trailers only	12	1	1	3	2	2	2	5	6	5	5	2	3	1	2	2	3	2	3	2	1	4	3	0	
1c				P boat trailers only 3am-11am	8	4	5	6	5	4	2	0	0	1	1	1	0	0	0	0	2	3	2	1	0	0	0	0	
2a	Lord St (foreshore)	Cairns St - end	NW	P disabled	2	0	0	0	0	0	0	0	1	1	0	0	0	0	0	1	1	0	0	0	0	0	1	0	0
2b				-	28	9	13	17	18	0	20	28	28	27	26	27	28	26	25	25	22	28	24	25	19	18	24	22	15
2c			SE	-	13	3	3	5	5	8	9	12	13	12	10	12	12	10	9	10	9	11	9	8	9	10	12	11	8
3a	Lord St (town centre)	Morris St - Cairns St	NW	P disabled	1	0	0	0	0	0	0	0	0	0	0	0	0	1	0	1	1	1	1	1	0	0	0	0	0
3b				1/4P 9am-5pm Mon-Fri	1	1	1	1	1	1	0	0	1	1	1	1	1	0	1	1	1	1	1	1	1	1	1	1	1
3c				-	25	19	23	15	18	17	24	24	25	23	22	23	25	25	25	25	25	22	22	25	25	25	22	20	18
3d			SE	-	16	10	15	11	14	16	13	16	15	16	14	14	16	15	13	13	14	14	14	17	15	15	16	14	11
4a	Lord St (GOR)	Morris St - McCue St	NW	Bus Zone	3	0	0	2	2	0	0	0	0	0	0	0	0	0	2	1	1	1	2	0	0	0	0	0	0
4b				-	18	0	0	0	0	1	0	0	2	2	0	0	0	0	0	1	1	1	1	1	0	0	1	0	0
4c			SE	-	23	0	0	0	0	0	0	0	0	0	0	0	0	0	0	0	1	0	0	1	1	0	0	0	0
5	off-street carpark - recreation reserve			-	11	3	3	3	0	3	3	4	4	2	4	5	5	4	2	3	2	0	2	3	4	4	2	2	2
6a	Morris St (GOR)	Lord St - Pitcher St	NE	-	23	1	0	1	2	3	4	3	4	2	1	0	2	2	0	1	2	3	2	2	3	2	3	4	5
6b			SW	-	8	0	0	0	2	3	5	8	7	7	7	4	5	5	5	4	4	4	7	7	7	7	7	6	5
6c				-	22	0	0	0	0	0	0	0	0	0	0	0	1	0	0	0	0	1	3	4	5	5	3	1	1
7a	Morris St (VIS)	Lord St - Tregoe St	NE	P disabled	1	0	0	0	0	0	0	0	0	0	0	0	0	0	0	0	0	1	0	0	0	0	0	0	0
7b				-	4	0	0	1	3	1	1	1	1	0	1	0	1	0	3	1	0	0	1	2	0	1	2	1	2
7c			SW	-	5	0	0	0	0	0	0	0	0	0	1	0	0	0	0	0	0	0	0	0	0	0	0	0	0
8a	off-street carpark - Morris St			P disabled	2	0	0	0	0	0	0	0	0	0	0	0	0	0	0	0	0	0	0	0	0	0	0	0	0
8b				-	32	16	16	20	19	19	16	15	17	17	18	19	23	22	24	25	24	22	28	31	33	29	29	30	33
9a	Tregoe St	Morris St - Cairns St	NW	-	39	8	7	7	12	14	17	14	14	20	21	22	21	16	14	14	16	13	12	13	13	11	10	8	9
9b				-	2	0	1	0	0	1	0	0	0	0	1	1	0	0	1	1	1	0	0	1	1	0	0	0	0
9c				Bus Zone (P 5min)	1	0	0	0	0	0	0	0	0	1	0	0	0	0	0	0	1	0	0	0	0	1	1	0	0
9d			SE	-	18	12	13	11	10	11	11	12	12	14	12	13	12	11	11	11	11	12	11	10	10	10	8	9	8
10a	Cairns St (foreshore)	Lord St - Tregoe St	NE	P trucks & buses prohibited	10	2	5	8	9	7	7	9	7	10	10	8	7	8	6	9	9	6	5	3	6	7	6	5	1
10b			SW	P disabled	2	0	0	0	0	0	0	0	0	1	0	0	1	1	0	1	2	1	0	0	0	0	0	0	0
10c				-	29	17	24	29	29	24	24	25	28	27	29	28	25	27	28	29	27	18	23	21	23	29	25	13	10
11a	Cairns St	Lord St - Hennessy St	NE	-	5	2	2	3	4	5	5	5	5	5	3	3	3	4	5	1	2	2	4	4	3	2	2	2	
11b			SW	Bus Zone	2	0	1	1	0	0	0	2	3	2	1	1	1	0	0	1	2	0	1	2	3	3	1	0	0
12a	Hennessy St	Morris St - Cairns St	NW	-	17	5	4	3	4	4	5	4	3	3	4	3	3	3	3	3	3	3	4	4	4	4	4	4	4
12b			SE	-	17	1	1	1	0	0	0	0	0	0	1	2	1	2	2	2	2	3	4	4	4	4	4	3	3
T Total					414	116	138	148	159	144	168	190	199	201	199	194	196	187	180	191	186	174	186	196	193	191	190	163	141
Central Area Total					304	110	132	141	151	136	158	176	184	187	186	184	185	177	168	179	172	161	164	173	169	168	170	149	128

Notes:

Legend: 0-50% 51-70% 71-85% 86-100% >100% occupancy rate



Sunday		26-Jan-20		(weather: showers then sunny, max. of 19)																	
ID	Location	Segment	Side	Restrictions	Supply	Demands															
						9:30	10:00	10:30	11:00	11:30	12:00	12:30	13:00	13:30	14:00	14:30	15:00	15:30	16:00	16:30	17:00
1a	off-street carpark - end of Lord St		-		14	2	0	1	0	0	1	1	7	9	12	12	6	5	2	1	0
1b				P boat trailers only	12	5	1	3	1	1	6	6	9	15	19	20	11	11	4	4	3
1c				P boat trailers only 3am-11am	8	1	1	1	1	1	1	1	0	1	2	3	4	1	1	0	0
2a	Lord St (foreshore)	Caims St - end	NW	P disabled	2	0	0	0	0	0	0	0	2	0	1	0	1	1	0	0	0
2b				-	28	17	19	21	27	28	25	28	27	29	27	29	28	27	21	19	19
2c			SE	-	13	7	5	7	12	12	10	13	12	13	13	13	9	8	9	8	8
3a	Lord St (town centre)	Morris St - Caims St	NW	P disabled	1	0	1	0	0	0	1	0	0	1	1	1	1	1	0	0	0
3b				1/4P 9am-5pm Mon-Fri	1	1	1	1	0	0	1	1	1	1	1	1	1	1	1	1	1
3c				-	25	18	24	18	19	22	23	24	27	25	27	26	22	24	26	20	22
3d			SE	-	16	12	16	13	15	14	14	16	15	16	16	16	15	15	15	16	15
4a	Lord St (GOR)	Morris St - McCue St	NW	Bus Zone	3	0	0	0	0	0	0	1	1	0	0	0	0	0	0	0	0
4b				-	18	2	0	0	0	0	0	0	0	0	0	0	0	0	0	0	0
4c			SE	-	23	0	0	0	0	0	0	0	0	1	1	0	1	2	4	4	3
5	off-street carpark - recreation reserve			-	11	2	1	1	6	5	8	7	9	14	15	14	16	15	19	15	15
6a	Morris St (GOR)	Lord St - Pitcher St	NE	-	23	1	4	3	1	4	0	2	3	6	7	9	10	6	9	9	7
6b			SW	-	8	2	2	2	2	3	7	8	8	8	8	8	8	8	8	8	8
6c				-	22	0	0	0	0	0	0	1	1	7	8	8	3	1	1	0	0
7a	Morris St (VIS)	Lord St - Tregea St	NE	P disabled	1	0	0	0	0	0	0	0	0	0	0	0	0	0	1	0	0
7b				-	4	0	0	2	0	0	0	1	0	2	2	2	4	3	3	3	2
7c			SW	-	5	0	0	0	0	0	0	0	0	0	0	0	0	0	0	0	0
8a	off-street carpark - Morris St			P disabled	2	0	0	0	0	0	0	0	0	0	0	0	0	0	0	0	0
8b				-	32	30	28	39	32	34	27	23	25	21	20	23	24	19	19	18	18
9a	Tregea St	Morris St - Caims St	NW	-	39	9	10	8	12	11	13	14	20	25	27	24	17	13	12	12	12
9b				-	2	0	0	0	0	0	1	0	1	1	1	0	1	0	1	0	0
9c				Bus Zone (P 5min)	1	0	0	0	0	0	0	0	0	0	2	1	0	0	0	0	0
9d			SE	-	18	10	10	10	10	11	12	11	14	14	13	13	12	11	10	11	9
10a	Caims St (foreshore)	Lord St - Tregea St	NE	P trucks & buses prohibited	10	7	7	9	3	7	7	9	10	10	10	9	10	6	5	4	5
10b			SW	P disabled	2	0	0	0	0	0	0	1	1	0	1	0	1	2	0	0	0
10c				-	29	24	28	24	20	29	29	28	28	29	29	29	29	24	28	20	18
11a	Caims St	Lord St - Hennessy St	NE	-	5	2	4	3	4	3	3	4	4	4	5	5	6	4	4	4	4
11b			SW	Bus Zone	2	1	1	1	0	0	0	1	2	2	2	1	2	2	0	0	0
12a	Hennessy St	Morris St - Caims St	NW	-	17	4	4	4	4	4	4	3	4	5	3	3	4	4	4	4	4
12b			SE	-	17	1	1	1	1	1	1	1	0	0	0	0	1	2	2	1	1
Total					414	158	168	172	170	190	194	205	231	259	273	270	246	217	208	183	174
Central Area Total					304	148	160	164	163	182	182	190	215	236	251	250	227	198	189	166	158

Notes: (i) An additional 5 vehicles parked on nature strip 1:30-5:00pm adjacent area ID-11a.

Legend: 0-50% 51-70% 71-85% 86-100% >100% occupancy rate



Sunday		26-Jan-20		(weather: showers then sunny, max. of 19)																	
ID	Location	Segment	Side	Restrictions	Supply	Long Vehicle Demands															
						9:30	10:00	10:30	11:00	11:30	12:00	12:30	13:00	13:30	14:00	14:30	15:00	15:30	16:00	16:30	17:00
1a	off-street carpark - end of Lord St			-	14	0	0	0	0	0	0	0	0	0	0	0	0	0	0	0	0
1b				P boat trailers only	12	0	0	0	0	0	0	0	RV2	RV1	0	0	0	0	0	0	
1c				P boat trailers only 3am-11am	8	BT1	BT1	BT1	BT1	BT1	BT1	BT1	0	0	BT1	RV1	RV1	RV1	RV1	0	
2a	Lord St (foreshore)	Caims St - end	NW	P disabled	2	0	0	0	0	0	0	0	0	0	0	0	0	0	0	0	
2b				-	28	0	0	0	0	0	0	0	0	0	0	0	0	0	0	0	
2c				SE -	13	0	0	RV1	0	0	0	RV1	RV2	RV1	RV1	RV1	RV1	0	0	0	
3a	Lord St (town centre)	Morris St - Caims St	NW	P disabled	1	0	0	0	0	0	0	0	0	0	0	0	0	0	0	0	
3b				1/4P 9am-5pm Mon-Fri	1	0	0	0	0	0	0	0	0	0	0	0	0	0	0	0	
3c				-	25	0	0	0	0	0	0	0	0	0	0	0	0	0	0	0	
3d				SE -	16	0	0	0	0	0	0	0	0	0	0	0	0	0	0	0	
4a	Lord St (GOR)	Morris St - McCue St	NW	Bus Zone	3	0	0	0	0	0	0	B1	B1	0	0	0	0	0	0	0	
4b				-	18	0	0	0	0	0	0	0	0	0	0	0	0	0	0	0	
4c				SE -	23	0	0	0	0	0	0	0	0	RV1	RV1	0	0	0	0	0	
5	off-street carpark - recreation reserve			-	11	0	0	0	0	0	0	0	0	0	0	0	0	0	0	0	
6a	Morris St (GOR)	Lord St - Pitcher St	NE	-	23	0	0	0	0	0	0	0	0	0	LV1	LV1	0	0	0	0	
6b				SW -	8	0	0	0	0	0	0	0	0	0	0	0	0	0	0	0	
6c				-	22	0	0	0	0	0	0	B1	B1	0	0	0	0	0	0	0	
7a	Morris St (VIS)	Lord St - Tregea St	NE	P disabled	1	0	0	0	0	0	0	0	0	0	0	0	0	0	0	0	
7b				-	4	0	0	0	0	0	0	0	0	0	0	0	0	0	0	0	
7c				SW -	5	0	0	0	0	0	0	0	0	0	0	0	0	0	0	0	
8a	off-street carpark - Morris St			P disabled	2	0	0	0	0	0	0	0	0	0	0	0	0	0	0	0	
8b				-	32	0	0	0	0	0	0	RV1	0	0	0	0	0	0	0	0	
9a	Tregea St	Morris St - Caims St	NW	-	39	0	0	0	0	0	0	0	0	0	0	0	0	0	0	0	
9b				-	2	0	0	0	0	0	B1	0	B1	B1	B1	0	0	B1	0	B1	
9c				Bus Zone (P 5min)	1	0	0	0	0	0	0	0	0	0	B2	B1	0	0	0	0	
9d				SE -	18	LV1	LV1	LV1	LV1	LV1	LV1	LV1	0	0	0	0	0	0	0	0	
10a	Caims St (foreshore)	Lord St - Tregea St	NE	P trucks & buses prohibited	10	RV1	RV1	RV1	0	0	0	0	0	0	0	0	0	0	0	0	
10b				SW P disabled	2	0	0	0	0	0	0	0	0	0	0	0	0	0	0	0	
10c				-	29	RV2	RV2	RV1	0	0	0	0	0	0	0	0	0	0	0	0	
11a	Caims St	Lord St - Hennessy St	NE	-	5	0	0	0	LV1	0	RV1	RV3	RV2	RV2	RV1	RV1	RV1	RV1	RV1	RV1	
11b				SW Bus Zone	2	B1	B1	B1	0	0	0	B1	B2	B2	B1	B1	RV2	B1	0	0	
12a	Hennessy St	Morris St - Caims St	NW	-	17	0	0	0	0	0	0	0	0	0	0	0	0	0	0	0	
12b				SE -	17	0	0	0	0	0	0	0	0	0	0	0	0	0	0	0	
Total					414	6	6	6	3	2	4	10	11	8	9	6	5	4	2	2	1
Central Area Total					304																

Notes: (i) An additional 5 vehicles parked on nature strip 1:30-5:00pm adjacent area ID-11a.

Legend: B = bus BT = boat trailer RV = motorhome / car+caravan LV = other



Friday		31-Jan-20		(weather: fine, max. of 39)		Demands																								
ID	Location	Segment	Side	Restrictions	Supply	9:30	10:00	10:30	11:00	11:30	12:00	12:30	13:00	13:30	14:00	14:30	15:00	15:30	16:00	16:30	17:00	17:30	18:00	18:30	19:00	19:30	20:00	20:30	21:00	
1a	off-street carpark - end of Lord St		-		14	3	3	1	1	1	2	3	2	1	1	0	0	0	0	0	0	0	0	0	0	0	0	0	1	0
1b				P boat trailers only	12	6	6	6	6	6	6	4	3	2	3	0	2	1	2	2	2	2	1	1	1	2	1	1	1	1
1c				P boat trailers only 3am-11am	8	1	2	2	2	3	2	2	2	1	0	0	0	0	1	2	2	2	2	2	2	2	2	1	1	1
2a	Lord St (foreshore)	Cairns St - end	NW	P disabled	2	0	0	0	0	0	0	0	1	1	1	0	0	0	0	0	0	0	0	0	0	0	0	0	0	0
2b				-	28	6	7	10	13	16	11	11	19	20	20	20	17	19	22	21	17	16	12	11	18	15	9	5	5	
2c			SE	-	13	4	4	5	5	5	7	8	7	6	9	8	5	3	3	3	2	4	4	5	9	8	6	6	6	
3a	Lord St (town centre)	Morris St - Cairns St	NW	P disabled	1	0	0	0	0	0	0	0	0	0	0	0	0	0	0	0	0	0	0	0	0	0	0	0	0	
3b				1/4P 9am-5pm Mon-Fri	1	1	1	1	1	0	1	0	1	1	1	1	1	1	1	1	1	1	1	1	1	1	1	1	1	1
3c				-	25	17	23	21	20	10	15	15	24	22	21	13	21	10	14	12	17	13	22	25	24	27	23	25	24	
3d			SE	-	16	11	12	12	8	12	13	13	15	14	15	12	10	6	10	10	9	8	15	16	15	17	16	15	16	
4a	Lord St (GOR)	Morris St - McCue St	NW	Bus Zone	3	0	0	0	0	0	0	0	0	0	0	0	0	0	0	0	0	0	0	0	0	0	0	0	0	
4b				-	18	0	0	0	0	0	0	0	0	0	0	0	0	0	0	1	0	0	1	0	0	0	0	0	0	
4c			SE	-	23	0	0	0	0	0	0	0	0	1	0	0	0	0	0	0	1	0	0	0	0	0	0	0	1	
5	off-street carpark - recreation reserve			-	11	2	0	0	0	1	3	2	2	1	2	4	3	2	3	2	5	5	5	6	7	5	4	3	2	
6a	Morris St (GOR)	Lord St - Pitcher St	NE	-	23	0	0	0	0	1	3	0	0	3	2	2	1	0	0	0	0	0	1	2	2	5	3	2	0	
6b			SW	-	8	1	1	0	0	1	2	4	2	4	7	6	4	3	2	2	2	3	5	7	7	6	7	7	7	
6c				-	22	0	0	0	0	0	0	0	0	0	0	0	0	0	0	0	0	0	0	0	0	2	3	3	2	
7a	Morris St (VIS)	Lord St - Tregoea St	NE	P disabled	1	0	0	0	0	0	0	0	0	0	0	0	0	0	0	0	0	0	0	0	0	0	0	0	0	
7b				-	4	0	0	0	1	0	1	0	1	1	1	1	1	1	2	1	0	0	0	0	0	0	0	0	0	
7c			SW	-	5	0	0	0	0	0	0	1	0	0	0	0	0	0	1	1	0	0	0	0	1	0	0	0	0	
8a	off-street carpark - Morris St			P disabled	2	0	0	0	0	0	0	0	0	0	0	0	0	0	0	0	0	0	0	0	0	0	0	0	0	
8b				-	32	7	8	8	10	9	9	9	9	9	9	9	9	10	10	10	6	7	9	9	9	9	8	8	8	
9a	Tregoea St	Morris St - Cairns St	NW	-	39	5	4	1	1	1	2	2	2	1	3	5	3	3	3	6	6	9	7	7	7	7	8	9	9	
9b				-	2	0	0	0	0	0	0	0	0	1	1	2	1	0	0	0	1	0	0	0	0	0	0	0	0	
9c				Bus Zone (P 5min)	1	0	0	0	0	0	0	0	0	0	1	1	1	0	1	0	1	0	0	0	0	0	0	0	0	
9d			SE	-	18	9	10	12	10	11	9	9	10	8	7	9	10	8	9	11	9	7	8	11	13	8	5	4	4	
10a	Cairns St (foreshore)	Lord St - Tregoea St	NE	P trucks & buses prohibited	10	1	1	5	6	5	5	4	6	7	10	9	4	4	6	7	8	8	3	4	5	5	3	2	3	
10b			SW	P disabled	2	0	0	0	1	0	0	0	0	0	0	0	0	0	1	1	1	1	0	0	0	0	0	0	0	
10c				-	29	14	24	26	24	25	22	25	25	29	29	27	25	27	25	24	28	28	18	26	24	26	26	21	19	
11a	Cairns St	Lord St - Hennessy St	NE	-	5	4	4	4	4	4	4	4	2	3	4	4	4	3	3	3	2	1	2	2	3	4	3	2	2	
11b			SW	Bus Zone	2	0	0	0	0	0	0	0	0	2	1	0	0	0	0	0	0	0	0	1	1	0	0	0	0	
12a	Hennessy St	Morris St - Cairns St	NW	-	17	3	2	1	1	1	1	3	2	3	3	3	2	3	3	3	3	3	1	3	3	3	3	3	4	
12b			SE	-	17	0	0	0	0	0	0	1	0	0	0	0	0	0	0	0	1	1	1	1	1	1	1	1	1	
T Total					414	95	112	115	114	112	118	120	135	141	150	136	124	104	121	124	127	119	116	140	153	153	133	120	116	
Central Area Total					304	91	109	114	113	110	115	112	131	131	139	127	118	98	116	118	120	112	108	128	141	141	119	106	101	

Notes:

Legend: 0-50% 51-70% 71-85% 86-100% >100% occupancy rate



Friday		31-Jan-20		(weather: fine, max. of 39)		Long Vehicle Demands																									
ID	Location	Segment	Side	Restrictions	Supply	9:30	10:00	10:30	11:00	11:30	12:00	12:30	13:00	13:30	14:00	14:30	15:00	15:30	16:00	16:30	17:00	17:30	18:00	18:30	19:00	19:30	20:00	20:30	21:00		
1a	off-street carpark - end of Lord St		-		14	0	0	0	0	0	0	0	0	0	0	0	0	0	0	0	0	0	0	0	0	0	0	0	0		
1b				P boat trailers only	12	BT6	BT6	BT6	BT6	BT6	BT6	BT4	BT3	BT2	BT1	0	0	0	0	0	0	0	0	0	0	0	0	0	0		
1c				P boat trailers only 3am-11am	8	BT1	BT2	BT2	BT2	BT2	BT2	BT2	BT2	BT1	0	0	0	0	0	BT1	BT2	BT2	BT2	BT2	BT2	BT2	BT2	BT2	BT1	BT1	
2a	Lord St (foreshore)	Cairns St - end	NW	P disabled	2	0	0	0	0	0	0	0	0	0	0	0	0	0	0	0	0	0	0	0	0	0	0	0			
2b				-	28	0	0	0	0	0	0	0	0	0	0	0	0	0	0	0	0	0	0	0	0	0	0	0			
2c			SE	-	13	0	0	0	0	RV1	RV1	RV1	RV2	RV2	RV2	RV2	RV1	RV1	0	0	0	0	0	0	0	0	0	0			
3a	Lord St (town centre)	Morris St - Cairns St	NW	P disabled	1	0	0	0	0	0	0	0	0	0	0	0	0	0	0	0	0	0	0	0	0	0	0	0			
3b				1/4P 9am-5pm Mon-Fri	1	0	0	0	0	0	0	0	0	0	0	0	0	0	0	0	0	0	0	0	0	0	0	0			
3c				-	25	0	0	0	0	0	0	0	0	0	0	0	0	0	0	0	0	0	0	0	0	0	0	0			
3d			SE	-	16	RV2	RV2	RV1	0	0	0	0	0	0	0	0	0	0	0	0	RV1	0	0	0	0	0	0	0			
4a	Lord St (GOR)	Morris St - McCue St	NW	Bus Zone	3	0	0	0	0	0	0	0	0	0	0	0	0	0	0	0	0	0	0	0	0	0	0	0			
4b				-	18	0	0	0	0	0	0	0	0	0	0	0	0	0	0	RV1	0	0	0	0	0	0	0	0			
4c			SE	-	23	0	0	0	0	0	0	0	0	0	0	0	0	0	0	0	0	0	0	0	0	0	0	0			
5	off-street carpark - recreation reserve		-		11	0	0	0	0	0	0	0	0	0	0	0	0	0	0	0	0	0	0	0	0	0	0	0			
6a	Morris St (GOR)	Lord St - Pitcher St	NE	-	23	0	0	0	0	RV1	RV1	0	0	0	0	0	0	0	0	0	0	0	0	0	0	0	0	0			
6b			SW	-	8	0	0	0	0	0	0	0	0	0	0	0	0	0	0	0	0	0	0	0	0	0	0	0			
6c				-	22	0	0	0	0	0	0	0	0	0	0	0	0	0	0	0	0	0	0	0	0	0	0	0			
7a	Morris St (VIS)	Lord St - Tregoe St	NE	P disabled	1	0	0	0	0	0	0	0	0	0	0	0	0	0	0	0	0	0	0	0	0	0	0	0			
7b				-	4	0	0	0	0	0	RV1	0	0	0	0	0	0	0	RV1	RV1	0	0	0	0	0	0	0	0			
7c			SW	-	5	0	0	0	0	0	0	0	0	0	0	0	0	0	0	0	0	0	0	0	0	0	0	0			
8a	off-street carpark - Morris St			P disabled	2	0	0	0	0	0	0	0	0	0	0	0	0	0	0	0	0	0	0	0	0	0	0	0			
8b				-	32	0	0	0	0	0	0	0	0	0	0	0	0	0	0	0	0	0	0	0	0	0	0	0			
9a	Tregoe St	Morris St - Cairns St	NW	-	39	0	0	0	0	0	0	0	LV1	0	0	0	0	0	0	0	0	0	0	0	0	0	0	0			
9b				-	2	0	0	0	0	0	0	0	0	B1	B1	B2	0	0	0	0	B1	0	0	0	0	0	0	0			
9c				Bus Zone (P 5min)	1	0	0	0	0	0	0	0	0	0	B1	B1	B1	0	B1	0	B1	0	0	0	0	0	0	0			
9d			SE	-	18	0	0	0	0	0	0	0	0	0	0	0	B1	0	0	RV1	RV2	RV2	RV2	RV1	RV1	RV1	RV1	RV1			
10a	Cairns St (foreshore)	Lord St - Tregoe St	NE	P trucks & buses prohibited	10	0	0	0	0	0	RV2	RV1	0	0	0	0	0	0	0	0	0	0	0	0	0	0	0	0			
10b			SW	P disabled	2	0	0	0	0	0	0	0	0	0	0	0	0	0	0	0	0	0	0	0	0	0	0	0			
10c				-	29	0	0	0	0	0	0	0	0	0	0	0	0	0	0	0	0	0	0	0	0	0	0	0			
11a	Cairns St	Lord St - Hennessy St	NE	-	5	0	0	0	0	0	0	0	0	0	0	RV1	RV1	0	0	0	0	0	0	0	0	0	0	0			
11b			SW	Bus Zone	2	0	0	0	0	0	0	0	0	B2	B1	0	0	0	0	0	0	0	0	B1	B1	0	0	0			
12a	Hennessy St	Morris St - Cairns St	NW	-	17	0	0	0	0	0	0	0	0	0	0	0	0	0	0	0	0	0	0	0	0	0	0	0			
12b			SE	-	17	0	0	0	0	0	0	0	0	0	0	0	0	0	0	0	0	0	0	0	0	0	0	0			
Total					414	10	10	9	8	10	13	8	8	8	5	6	4	3	1	4	4	4	4	4	5	5	3	3	2	2	
Central Area Total					304																										

Notes:

Legend: B = bus BT = boat trailer RV = motorhome / car+caravan LV = other



Friday		07-Feb-20		(weather: sunny, max. of 22)																	
ID	Location	Segment	Side	Restrictions	Supply	Demands															
						9:30	10:00	10:30	11:00	11:30	12:00	12:30	13:00	13:30	14:00	14:30	15:00	15:30	16:00	16:30	17:00
1a	off-street carpark - end of Lord St		-		14	0	0	2	2	0	0	0		0	0	2	0	0	1	1	1
1b				P boat trailers only	12	2	0	0	0	1	0	1		1	6	0	0	0	1	0	0
1c				P boat trailers only 3am-11am	8	0	1	1	1	0	0	0		1	1	0	0	2	1	1	0
2a	Lord St (foreshore)	Caims St - end	NW	P disabled	2	0	0	0	0	0	0	0		1	0	0	0	0	0	0	0
2b				-	28	5	2	9	9	8	11	11		15	12	11	11	11	10	8	7
2c			SE	-	13	3	5	3	3	3	3	2		4	6	3	3	3	2	1	2
3a	Lord St (town centre)	Morris St - Caims St	NW	P disabled	1	0	0	0	0	0	0	0		0	0	0	0	0	0	0	0
3b				1/4P 9am-5pm Mon-Fri	1	0	0	0	0	0	0	0		0	0	1	0	0	1	0	0
3c				-	25	19	23	16	14	11	11	16		17	10	16	16	17	13	13	15
3d			SE	-	16	12	13	14	12	12	11	16		14	19	11	14	6	10	8	9
4a	Lord St (GOR)	Morris St - McCue St	NW	Bus Zone	3	0	0	0	0	0	0	0		0	2	0	0	0	0	0	0
4b				-	18	0	0	0	0	0	0	0		0	1	0	0	0	0	0	0
4c			SE	-	23	0	0	0	0	0	0	0		0	0	0	0	0	0	0	0
5	off-street carpark - recreation reserve			-	11	1	1	1	1	1	1	2		4	1	1	1	2	3	3	2
6a	Morris St (GOR)	Lord St - Pitcher St	NE	-	23	0	1	1	1	0	0	2		0	0	0	0	0	0	0	2
6b			SW	-	8	1	1	1	0	2	3	5		0	1	2	1	1	1	0	2
6c				-	22	0	0	0	0	0	0	1		1	0	0	0	0	0	0	0
7a	Morris St (VIS)	Lord St - Tregea St	NE	P disabled	1	0	0	0	0	0	0	0		1	0	0	0	0	0	0	0
7b				-	4	1	2	3	1	0	1	0		0	2	3	0	0	1	0	0
7c			SW	-	5	0	0	0	0	0	0	0		2	0	0	0	0	0	0	0
8a	off-street carpark - Morris St			P disabled	2	0	0	0	0	0	0	0		0	0	0	0	0	0	0	0
8b				-	32	8	8	8	7	9	9	8		8	8	9	9	9	9	9	8
9a	Tregea St	Morris St - Caims St	NW	-	39	0	0	0	0	0	0	0		0	0	0	0	0	0	0	1
9b				-	2	0	0	0	1	0	0	0		0	0	0	0	0	0	0	0
9c				Bus Zone (P 5min)	1	0	1	1	0	0	0	0		0	0	0	1	0	0	1	0
9d			SE	-	18	8	6	6	6	5	4	5		4	3	0	4	4	5	5	6
10a	Caims St (foreshore)	Lord St - Tregea St	NE	P trucks & buses prohibited	10	0	2	2	3	2	1	6		6	5	4	4	2	1	2	0
10b			SW	P disabled	2	0	0	0	0	0	0	0		0	0	0	0	0	0	0	0
10c				-	29	14	13	15	18	16	19	16		16	13	14	10	13	11	8	16
11a	Caims St	Lord St - Hennessy St	NE	-	5	4	4	3	2	3	3	3		3	3	3	2	1	1	1	2
11b			SW	Bus Zone	2	0	0	0	0	0	0	1		1	1	1	0	0	0	0	1
12a	Hennessy St	Morris St - Caims St	NW	-	17	2	2	2	2	2	2	2		2	1	1	1	1	2	2	3
12b			SE	-	17	0	0	0	0	0	0	0		0	0	0	0	0	0	0	0
Total					414	80	85	88	83	75	79	97		101	95	82	77	72	73	63	77
Central Area Total					304	77	82	85	81	71	74	88		97	89	78	75	70	70	61	71

Notes:

Legend: 0-50% 51-70% 71-85% 86-100% >100% occupancy rate



Saturday		08-Feb-20		(weather: fine, max. of 18)																	
ID	Location	Segment	Side	Restrictions	Supply	Demands															
						9:30	10:00	10:30	11:00	11:30	12:00	12:30	13:00	13:30	14:00	14:30	15:00	15:30	16:00	16:30	17:00
1a	off-street carpark - end of Lord St		-		14	2	2	2	2	2	2	2	4	2	3	4	4	4	3	3	3
1b				P boat trailers only	12	0	0	0	0	2	1	1	3	7	2	4	4	2	3	2	3
1c				P boat trailers only 3am-11am	8	0	0	0	1	0	0	0	0	0	0	0	0	1	0	0	1
2a	Lord St (foreshore)	Caims St - end	NW	P disabled	2	0	0	0	0	0	1	1	0	0	0	0	0	0	0	0	0
2b				-	28	8	9	13	18	20	24	28	24	25	24	24	17	21	22	25	17
2c			SE	-	13	1	2	4	5	4	7	10	10	9	9	7	6	6	6	5	5
3a	Lord St (town centre)	Morris St - Caims St	NW	P disabled	1	0	0	1	0	0	0	0	0	0	0	0	0	1	0	0	0
3b				1/4P 9am-5pm Mon-Fri	1	0	0	1	1	1	1	1	1	1	1	1	0	1	1	0	1
3c				-	25	11	15	17	17	16	20	18	25	22	18	20	17	19	17	13	16
3d			SE	-	16	12	13	10	13	13	15	16	16	15	13	15	15	14	10	10	8
4a	Lord St (GOR)	Morris St - McCue St	NW	Bus Zone	3	0	0	0	0	0	0	0	1	1	1	0	0	0	0	0	0
4b				-	18	0	0	0	0	0	0	0	0	0	0	0	0	0	0	1	0
4c			SE	-	23	0	0	0	1	1	0	0	0	0	0	0	0	0	0	0	0
5	off-street carpark - recreation reserve			-	11	0	1	2	3	1	4	7	3	1	4	5	2	0	0	1	1
6a	Morris St (GOR)	Lord St - Pitcher St	NE	-	23	1	1	1	0	1	0	0	2	2	3	3	2	2	1	0	0
6b			SW	-	8	1	1	0	0	1	0	1	1	3	5	2	2	2	1	0	1
6c				-	22	0	0	0	0	0	0	1	1	1	1	1	0	0	0	0	0
7a	Morris St (VIS)	Lord St - Tregea St	NE	P disabled	1	0	0	0	0	0	0	0	0	0	0	0	0	0	0	0	0
7b				-	4	1	1	1	1	1	0	2	1	1	1	2	0	0	0	0	1
7c			SW	-	5	0	0	0	0	0	0	0	0	0	0	1	0	0	0	0	0
8a	off-street carpark - Morris St			P disabled	2	0	0	0	0	0	0	0	0	0	0	0	0	0	0	0	0
8b				-	32	7	9	13	13	15	15	12	11	11	11	10	8	9	8	7	11
9a	Tregea St	Morris St - Caims St	NW	-	39	0	3	5	20	23	22	26	24	14	6	7	7	5	9	5	6
9b				-	2	1	0	0	0	0	0	0	0	0	0	0	0	0	0	1	0
9c				Bus Zone (P 5min)	1	0	0	0	0	0	1	0	0	0	0	1	1	0	0	1	0
9d			SE	-	18	9	9	13	17	16	17	16	11	12	12	10	12	12	12	10	10
10a	Caims St (foreshore)	Lord St - Tregea St	NE	P trucks & buses prohibited	10	1	3	2	10	10	10	10	9	10	8	6	8	8	7	8	7
10b			SW	P disabled	2	0	0	0	0	0	0	0	0	0	0	0	0	0	0	0	0
10c				-	29	13	15	29	29	29	29	29	29	27	26	29	27	27	24	28	26
11a	Caims St	Lord St - Hennessy St	NE	-	5	3	3	3	3	4	3	3	3	3	5	4	3	2	2	2	3
11b			SW	Bus Zone	2	0	0	0	0	0	0	2	3	1	0	0	0	0	0	1	0
12a	Hennessy St	Morris St - Caims St	NW	-	17	4	4	3	2	1	1	1	1	0	0	0	1	2	2	2	2
12b			SE	-	17	0	0	0	0	0	0	1	1	1	1	1	1	1	1	1	1
Total					414	75	91	120	156	161	173	188	184	169	154	157	136	138	129	126	123
Central Area Total					304	70	86	117	153	158	172	182	176	162	146	153	133	134	125	121	119

Notes:

Legend: 0-50% 51-70% 71-85% 86-100% >100% occupancy rate



Saturday		08-Feb-20		(weather: fine, max. of 18)		Long Vehicle Demands																
ID	Location	Segment	Side	Restrictions	Supply	9:30	10:00	10:30	11:00	11:30	12:00	12:30	13:00	13:30	14:00	14:30	15:00	15:30	16:00	16:30	17:00	
1a	off-street carpark - end of Lord St		-		14	0	0	0	0	0	0	0	0	0	0	RV1	0	0	0	0	0	0
1b				P boat trailers only	12	0	0	0	0	RV1	RV1	RV1	RV1	RV1	0	0	0	0	0	0	0	0
1c				P boat trailers only 3am-11am	8	0	0	0	0	0	0	0	0	0	0	0	0	0	0	0	0	0
2a	Lord St (foreshore)	Caims St - end	NW	P disabled	2	0	0	0	0	0	0	0	0	0	0	0	0	0	0	0	0	0
2b				-	28	0	0	0	0	0	0	0	0	0	0	0	0	0	0	0	0	0
2c			SE	-	13	0	LV1	RV2	RV4	RV3	RV3	RV1	RV1	RV1	0	0	0	0	0	0	0	0
3a	Lord St (town centre)	Morris St - Caims St	NW	P disabled	1	0	0	0	0	0	0	0	0	0	0	0	0	0	0	0	0	0
3b				1/4P 9am-5pm Mon-Fri	1	0	0	0	0	0	0	0	0	0	0	0	0	0	0	0	0	0
3c				-	25	0	0	0	0	0	0	0	0	0	0	RV1	0	0	0	0	0	0
3d			SE	-	16	0	0	0	0	0	0	0	0	0	0	0	0	0	0	0	0	0
4a	Lord St (GOR)	Morris St - McCue St	NW	Bus Zone	3	0	0	0	0	0	0	0	B1	B1	B1	0	0	0	0	0	0	0
4b				-	18	0	0	0	0	0	0	0	0	0	0	0	0	0	0	0	0	0
4c			SE	-	23	0	0	0	0	0	0	0	0	0	0	0	0	0	0	0	0	0
5	off-street carpark - recreation reserve		-		11	0	0	0	0	0	0	0	0	0	0	0	0	0	0	0	0	0
6a	Morris St (GOR)	Lord St - Pitcher St	NE	-	23	0	0	0	0	RV1	0	0	0	0	0	0	0	0	0	0	0	0
6b			SW	-	8	0	0	0	0	0	0	0	0	0	0	0	0	0	0	0	0	0
6c				-	22	0	0	0	0	0	0	0	0	0	0	0	0	0	0	0	0	0
7a	Morris St (VIS)	Lord St - Tregea St	NE	P disabled	1	0	0	0	0	0	0	0	0	0	0	0	0	0	0	0	0	0
7b				-	4	0	0	0	0	0	0	0	0	0	0	0	0	0	0	0	0	RV1
7c			SW	-	5	0	0	0	0	0	0	0	0	0	0	0	0	0	0	0	0	0
8a	off-street carpark - Morris St			P disabled	2	0	0	0	0	0	0	0	0	0	0	0	0	0	0	0	0	0
8b				-	32	0	0	LV1	LV1	RV4	RV4	RV1	RV1	RV2	RV2	RV1	0	0	0	0	0	0
9a	Tregea St	Morris St - Caims St	NW	-	39	0	0	0	0	0	0	0	0	0	0	0	0	0	0	0	0	0
9b				-	2	B1	0	0	0	0	0	0	0	0	0	0	0	0	0	0	0	0
9c				Bus Zone (P 5min)	1	0	0	0	0	0	LV1	0	0	0	0	B1	B1	0	0	LV1	0	0
9d			SE	-	18	0	0	0	LV1	0	RV1	RV1	RV1	0	0	0	0	0	0	0	0	0
10a	Caims St (foreshore)	Lord St - Tregea St	NE	P trucks & buses prohibited	10	0	0	0	0	0	0	0	0	0	0	0	0	0	0	0	0	0
10b			SW	P disabled	2	0	0	0	0	0	0	0	0	0	0	0	0	0	0	0	0	0
10c				-	29	0	0	0	0	0	0	0	0	0	0	0	0	0	0	0	0	0
11a	Caims St	Lord St - Hennessy St	NE	-	5	0	0	0	0	RV1	0	0	0	0	0	0	0	0	0	0	0	0
11b			SW	Bus Zone	2	0	0	0	0	0	0	RV1B1	RV2B1	RV1	0	0	0	0	0	0	B1	0
12a	Hennessy St	Morris St - Caims St	NW	-	17	0	0	0	0	0	0	0	0	0	0	0	0	0	0	0	0	0
12b			SE	-	17	0	0	0	0	0	0	0	0	0	0	0	0	0	0	0	0	0
Total					414	1	1	3	6	10	10	6	8	6	3	4	1	0	0	2	1	
Central Area Total					304																	

Notes:

Legend: B = bus BT = boat trailer RV = motorhome / car+caravan LV = other



Wednesday 12-Feb-20 (weather: overcast & showers, max. of 20)																					
ID	Location	Segment	Side	Restrictions	Supply	Demands															
						9:30	10:00	10:30	11:00	11:30	12:00	12:30	13:00	13:30	14:00	14:30	15:00	15:30	16:00	16:30	17:00
1a	off-street carpark - end of Lord St		-		14	0	0	0	0	0	0	0	0	0	0	0	0	0	0	0	0
1b				P boat trailers only	12	0	0	0	0	0	0	0	0	0	1	0	0	1	1	0	1
1c				P boat trailers only 3am-11am	8	0	0	0	0	0	1	1	2	0	1	0	0	0	0	0	0
2a	Lord St (foreshore)	Caims St - end	NW	P disabled	2	0	0	0	0	0	0	0	1	0	0	0	0	0	0	0	0
2b				-	28	4	5	6	5	8	10	11	9	9	8	7	7	7	5	5	6
2c			SE	-	13	3	2	6	4	4	5	6	5	7	4	4	2	2	1	4	2
3a	Lord St (town centre)	Morris St - Caims St	NW	P disabled	1	0	0	0	0	0	0	0	0	0	0	0	0	0	0	0	0
3b				1/4P 9am-5pm Mon-Fri	1	1	1	1	1	0	1	0	1	1	0	0	0	0	1	0	0
3c				-	25	21	25	20	16	19	16	20	22	22	16	14	14	10	10	12	14
3d			SE	-	16	10	15	8	8	10	10	14	10	12	11	11	8	9	0	10	9
4a	Lord St (GOR)	Morris St - McCue St	NW	Bus Zone	3	0	0	0	0	0	0	0	0	0	0	0	0	0	0	0	0
4b				-	18	0	0	1	0	0	0	0	1	0	0	0	0	0	0	0	0
4c			SE	-	23	0	0	0	0	0	0	0	0	2	3	1	1	1	1	1	1
5	off-street carpark - recreation reserve			-	11	0	1	0	0	3	5	5	4	2	1	1	2	3	2	0	1
6a	Morris St (GOR)	Lord St - Pitcher St	NE	-	23	1	1	2	1	2	1	0	0	0	0	1	0	1	1	1	1
6b			SW	-	8	0	0	0	2	1	2	1	1	1	3	3	3	1	1	3	2
6c				-	22	0	0	1	0	1	0	0	0	0	0	0	0	0	0	0	0
7a	Morris St (VIS)	Lord St - Tregea St	NE	P disabled	1	0	0	0	0	0	0	0	0	0	0	0	0	0	0	0	0
7b				-	4	1	2	1	1	1	0	3	2	2	2	1	3	1	2	3	2
7c			SW	-	5	0	0	0	0	0	0	0	0	0	0	0	0	0	0	0	0
8a	off-street carpark - Morris St			P disabled	2	0	0	0	0	0	0	0	0	0	0	0	0	0	0	0	0
8b				-	32	3	4	5	5	5	8	8	7	8	6	6	6	6	5	3	3
9a	Tregea St	Morris St - Caims St	NW	-	39	1	1	1	1	0	1	1	1	1	2	2	0	1	0	0	3
9b				-	2	0	0	0	0	0	0	0	0	0	0	0	0	0	0	0	0
9c				Bus Zone (P 5min)	1	0	0	0	0	0	0	0	0	0	0	1	0	0	0	1	0
9d			SE	-	18	0	0	0	0	0	0	0	3	2	1	2	4	1	0	0	1
10a	Caims St (foreshore)	Lord St - Tregea St	NE	P trucks & buses prohibited	10	1	1	1	1	3	3	7	5	6	5	4	3	2	3	1	1
10b			SW	P disabled	2	0	0	0	0	0	0	0	0	0	0	0	0	0	0	0	0
10c				-	29	4	7	12	7	11	14	22	26	20	19	16	10	13	15	7	14
11a	Caims St	Lord St - Hennessy St	NE	-	5	2	3	4	3	3	3	2	3	2	3	3	2	2	2	2	1
11b			SW	Bus Zone	2	0	1	0	0	1	1	1	0	0	0	0	0	0	0	0	0
12a	Hennessy St	Morris St - Caims St	NW	-	17	0	0	0	1	0	0	0	1	1	1	1	1	1	0	0	0
12b			SE	-	17	1	1	1	1	1	0	0	0	0	0	0	0	0	0	0	0
Total					414	53	70	70	57	73	81	102	104	98	87	78	66	62	50	53	62
Central Area Total					304	52	68	67	53	69	78	100	101	94	80	73	61	59	48	49	59

Notes:

Legend: 0-50% 51-70% 71-85% 86-100% >100% occupancy rate



Wednesday 12-Feb-20 (weather: overcast & showers, max. of 20)																					
ID	Location	Segment	Side	Restrictions	Supply	Long Vehicle Demands															
						9:30	10:00	10:30	11:00	11:30	12:00	12:30	13:00	13:30	14:00	14:30	15:00	15:30	16:00	16:30	17:00
1a	off-street carpark - end of Lord St			-	14	0	0	0	0	0	0	0	0	0	0	0	0	0	0	0	0
1b				P boat trailers only	12	0	0	0	0	0	0	0	0	0	B1	0	0	0	0	0	0
1c				P boat trailers only 3am-11am	8	0	0	0	0	0	RV1	RV1	RV1	0	0	0	0	0	0	0	0
2a	Lord St (foreshore)	Caims St - end	NW	P disabled	2	0	0	0	0	0	0	0	0	0	0	0	0	0	0	0	0
2b				-	28	0	0	0	0	0	0	0	0	0	0	0	0	0	0	0	0
2c				SE -	13	RV1	RV1	RV1	0	0	LV1	LV1	RV2	RV2	RV1	RV1	0	0	0	0	0
3a	Lord St (town centre)	Morris St - Caims St	NW	P disabled	1	0	0	0	0	0	0	0	0	0	0	0	0	0	0	0	0
3b				1/4P 9am-5pm Mon-Fri	1	0	0	0	0	0	0	0	0	0	0	0	0	0	0	0	0
3c				-	25	0	0	0	0	0	0	0	0	0	0	0	0	0	RV1	0	0
3d				SE -	16	0	0	0	0	0	0	0	0	0	0	0	0	0	0	0	0
4a	Lord St (GOR)	Morris St - McCue St	NW	Bus Zone	3	0	0	0	0	0	0	0	0	0	0	0	0	0	0	0	0
4b				-	18	0	0	0	0	0	0	0	0	0	0	0	0	0	0	0	0
4c				SE -	23	0	0	0	0	0	0	0	0	0	0	0	0	0	0	0	0
5	off-street carpark - recreation reserve			-	11	0	0	0	0	0	0	0	0	0	0	0	0	0	0	0	0
6a	Morris St (GOR)	Lord St - Pitcher St	NE	-	23	0	0	0	0	0	0	0	0	0	0	0	0	0	0	0	0
6b				SW -	8	0	0	0	0	0	0	0	0	0	0	0	0	0	0	0	0
6c				-	22	0	0	0	0	LV1	0	0	0	0	0	0	0	0	0	0	0
7a	Morris St (VIS)	Lord St - Tregea St	NE	P disabled	1	0	0	0	0	0	0	0	0	0	0	0	0	0	0	0	0
7b				-	4	0	0	0	0	0	0	0	0	0	0	0	0	0	0	0	RV1
7c				SW -	5	0	0	0	0	0	0	0	0	0	0	0	0	0	0	0	0
8a	off-street carpark - Morris St			P disabled	2	0	0	0	0	0	0	0	0	0	0	0	0	0	0	0	0
8b				-	32	0	0	0	0	0	RV1	0	0	0	0	0	0	0	0	0	0
9a	Tregea St	Morris St - Caims St	NW	-	39	0	0	0	0	0	0	RV1	RV1	RV1	RV1	0	0	0	0	0	0
9b				-	2	0	0	0	0	0	0	0	0	0	0	0	0	0	0	0	0
9c				Bus Zone (P 5min)	1	0	0	0	0	0	0	0	0	0	0	B1	0	0	0	B1	0
9d				SE -	18	0	0	0	0	0	0	0	RV2	RV2	RV1	RV2	RV2	RV1	0	0	0
10a	Caims St (foreshore)	Lord St - Tregea St	NE	P trucks & buses prohibited	10	0	0	0	0	0	0	RV2	RV1	0	0	RV1	RV1	RV1	RV2	RV1	RV1
10b				SW P disabled	2	0	0	0	0	0	0	0	0	0	0	0	0	0	0	0	0
10c				-	29	0	0	0	0	0	0	0	0	0	0	RV1	0	0	0	0	0
11a	Caims St	Lord St - Hennessy St	NE	-	5	0	0	0	0	0	0	0	0	0	0	0	0	0	0	0	0
11b				SW Bus Zone	2	0	0	0	0	B1	B1	0	0	0	0	0	0	0	0	0	0
12a	Hennessy St	Morris St - Caims St	NW	-	17	0	0	0	0	0	0	0	0	0	0	0	0	0	0	0	0
12b				SE -	17	0	0	0	0	0	0	0	0	0	0	0	0	0	0	0	0
Total					414	1	1	1	0	2	4	5	7	5	4	6	3	2	3	2	2
Central Area Total					304																

Notes:

Legend: B = bus BT = boat trailer RV = motorhome / car+caravan LV = other



Sunday		16-Feb-20		(weather: sunny, max. of 20)																	
ID	Location	Segment	Side	Restrictions	Supply	Demands															
						9:30	10:00	10:30	11:00	11:30	12:00	12:30	13:00	13:30	14:00	14:30	15:00	15:30	16:00	16:30	17:00
1a	off-street carpark - end of Lord St		-		14	1	1	0	0	0	0	0	0	1	1	0	1	0	1	1	2
1b				P boat trailers only	12	0	1	2	3	2	6	6	6	7	7	5	5	3	3	2	2
1c				P boat trailers only 3am-11am	8	0	0	1	1	0	0	0	0	0	0	0	1	0	0	0	
2a	Lord St (foreshore)	Caims St - end	NW	P disabled	2	0	0	0	0	0	0	1	0	1	1	0	0	0	0	0	
2b				-	28	5	13	17	14	17	13	18	22	22	22	20	27	19	19	15	12
2c			SE	-	13	7	4	10	8	8	5	10	8	5	5	9	11	11	8	7	2
3a	Lord St (town centre)	Morris St - Caims St	NW	P disabled	1	1	1	0	0	0	0	0	0	1	1	0	0	0	0	0	
3b				1/4P 9am-5pm Mon-Fri	1	1	1	1	0	1	1	1	0	1	1	1	1	1	1	1	1
3c				-	25	21	24	21	23	16	19	22	20	21	23	21	18	18	20	15	12
3d			SE	-	16	15	16	13	14	11	13	16	14	16	14	15	15	9	12	10	5
4a	Lord St (GOR)	Morris St - McCue St	NW	Bus Zone	3	0	0	0	0	0	0	0	1	1	1	0	0	0	0	0	0
4b				-	18	0	0	0	1	0	0	0	0	1	0	0	0	0	0	0	0
4c			SE	-	23	0	0	0	0	0	0	0	0	0	0	0	0	0	0	0	0
5	off-street carpark - recreation reserve			-	11	3	4	2	2	7	8	10	7	5	8	6	5	2	2	0	0
6a	Morris St (GOR)	Lord St - Pitcher St	NE	-	23	0	1	3	3	8	7	6	7	1	1	2	1	0	0	1	2
6b			SW	-	8	4	5	7	7	4	6	6	5	5	3	3	3	3	6	4	3
6c				-	22	0	0	0	0	0	2	2	2	2	2	3	2	2	2	0	0
7a	Morris St (VIS)	Lord St - Tregea St	NE	P disabled	1	0	0	0	0	0	0	0	0	0	0	0	0	0	0	0	0
7b				-	4	1	2	3	1	1	3	3	3	2	3	0	1	2	2	1	1
7c			SW	-	5	0	0	0	0	0	0	0	0	0	0	1	0	0	0	0	0
8a	off-street carpark - Morris St			P disabled	2	0	0	0	0	0	0	0	0	0	0	0	0	0	0	0	0
8b				-	32	9	8	22	23	23	20	15	13	12	10	10	9	8	7	5	6
9a	Tregea St	Morris St - Caims St	NW	-	39	2	2	3	7	4	7	7	7	7	4	4	2	0	0	1	1
9b				-	2	0	0	1	0	0	0	0	0	0	0	0	0	0	0	0	0
9c				Bus Zone (P 5min)	1	0	0	0	0	0	0	1	0	0	0	0	0	0	0	1	0
9d			SE	-	18	9	8	9	8	6	3	5	7	11	7	6	5	6	7	8	4
10a	Caims St (foreshore)	Lord St - Tregea St	NE	P trucks & buses prohibited	10	7	9	10	5	5	8	7	7	5	8	8	8	7	6	3	0
10b			SW	P disabled	2	0	0	0	0	0	1	1	1	1	0	0	0	1	0	1	0
10c				-	29	25	27	29	23	25	28	29	29	28	29	24	24	27	18	12	19
11a	Caims St	Lord St - Hennessy St	NE	-	5	4	4	4	3	1	2	3	4	2	5	3	3	2	1	1	1
11b			SW	Bus Zone	2	0	0	0	0	0	1	2	2	1	2	2	1	0	0	0	0
12a	Hennessy St	Morris St - Caims St	NW	-	17	3	2	0	1	1	1	1	1	2	2	2	2	2	2	2	2
12b			SE	-	17	1	1	1	1	0	0	0	0	0	0	0	0	0	0	0	0
Total					414	119	134	159	148	140	154	172	166	161	160	144	145	124	117	91	75
Central Area Total					304	111	126	151	138	135	144	161	155	149	150	134	137	117	107	85	70

Notes:

Legend: 0-50% 51-70% 71-85% 86-100% >100% occupancy rate



Sunday		16-Feb-20		(weather: sunny, max. of 20)																	
ID	Location	Segment	Side	Restrictions	Supply	Long Vehicle Demands															
						9:30	10:00	10:30	11:00	11:30	12:00	12:30	13:00	13:30	14:00	14:30	15:00	15:30	16:00	16:30	17:00
1a	off-street carpark - end of Lord St		-		14	0	0	0	0	0	0	0	0	0	0	0	0	0	0	0	0
1b				P boat trailers only	12	0	RV1	0	0	0	RV1	RV1	RV2	RV2	RV3	RV3	RV3	RV1	RV1	0	0
1c				P boat trailers only 3am-11am	8	0	0	0	0	0	0	0	0	0	0	0	0	0	0	0	0
2a	Lord St (foreshore)	Caims St - end	NW	P disabled	2	0	0	0	0	0	0	0	0	0	0	0	0	0	0	0	0
2b				-	28	0	0	0	0	LV1	0	0	0	0	0	0	0	0	0	0	0
2c			SE	-	13	0	0	0	RV2	0	0	0	0	0	0	0	0	0	0	0	0
3a	Lord St (town centre)	Morris St - Caims St	NW	P disabled	1	0	0	0	0	0	0	0	0	0	0	0	0	0	0	0	0
3b				1/4P 9am-5pm Mon-Fri	1	0	0	0	0	0	0	0	0	0	0	0	0	0	0	0	0
3c				-	25	0	0	0	0	0	0	0	0	0	0	0	0	0	0	0	0
3d			SE	-	16	0	0	0	0	0	0	0	0	0	0	0	0	0	0	0	0
4a	Lord St (GOR)	Morris St - McCue St	NW	Bus Zone	3	0	0	0	0	0	0	0	B1	B1	B1	0	0	0	0	0	0
4b				-	18	0	0	0	RV1	0	0	0	0	0	0	0	0	0	0	0	0
4c			SE	-	23	0	0	0	0	0	0	0	0	0	0	0	0	0	0	0	0
5	off-street carpark - recreation reserve		-		11	RV1	RV1	0	0	0	0	0	0	0	0	0	0	0	0	0	0
6a	Morris St (GOR)	Lord St - Pitcher St	NE	-	23	0	RV1	RV2	RV1	RV1	RV2	RV2	RV1	0	0	RV1	0	0	0	LV1	LV1
6b			SW	-	8	0	0	0	0	0	0	0	0	0	0	0	0	0	0	0	0
6c				-	22	0	0	0	0	0	0	0	0	0	0	0	0	0	0	0	0
7a	Morris St (VIS)	Lord St - Tregea St	NE	P disabled	1	0	0	0	0	0	0	0	0	0	0	0	0	0	0	0	0
7b				-	4	0	LV1	LV1	LV1	LV1	LV1	LV1	LV1	0	0	0	0	0	RV1	0	0
7c			SW	-	5	0	0	0	0	0	0	0	0	0	0	0	RV1	0	0	0	0
8a	off-street carpark - Morris St			P disabled	2	0	0	0	0	0	0	0	0	0	0	0	0	0	0	0	0
8b				-	32	0	0	0	0	0	0	0	0	0	0	0	0	0	0	0	0
9a	Tregea St	Morris St - Caims St	NW	-	39	0	0	0	LV1	LV1	0	LV1	LV1	LV1	0	0	0	0	0	0	0
9b				-	2	0	0	0	0	0	0	0	0	0	0	0	0	0	0	0	0
9c				Bus Zone (P 5min)	1	0	0	0	0	0	0	LV1	0	0	0	0	0	0	0	B1	0
9d			SE	-	18	0	0	RV1	RV1	0	0	LV1	RV1	RV3	0	0	0	0	0	0	0
10a	Caims St (foreshore)	Lord St - Tregea St	NE	P trucks & buses prohibited	10	RV2	RV1	0	0	0	RV1	RV1	RV1	0	0	0	0	0	0	0	0
10b			SW	P disabled	2	0	0	0	0	0	0	0	0	0	0	0	0	0	0	0	0
10c				-	29	0	0	0	0	0	0	0	0	0	0	0	0	0	0	0	0
11a	Caims St	Lord St - Hennessy St	NE	-	5	0	0	0	0	0	RV1	0	0	0	0	0	0	0	0	0	0
11b			SW	Bus Zone	2	0	0	0	0	0	B1	B2	B2	B1	B2	B2	0	0	0	0	0
12a	Hennessy St	Morris St - Caims St	NW	-	17	0	0	0	0	0	0	0	0	0	0	0	0	0	0	0	0
12b			SE	-	17	0	0	0	0	0	0	0	0	0	0	0	0	0	0	0	0
Total					414	3	5	4	7	4	7	10	10	8	6	6	4	1	2	2	1
Central Area Total					304																

Notes:

Legend: B = bus BT = boat trailer RV = motorhome / car+caravan LV = other



Thursday 20-Feb-20 (weather: overcast, max. of 16)																					
ID	Location	Segment	Side	Restrictions	Supply	Demands															
						9:30	10:00	10:30	11:00	11:30	12:00	12:30	13:00	13:30	14:00	14:30	15:00	15:30	16:00	16:30	17:00
1a	off-street carpark - end of Lord St		-		14	1	1	1	1	1	0	0	0		0	0	0	0	0	0	0
1b				P boat trailers only	12	0	1	1	1	0	1	0	1		0	0	1	1	1	0	0
1c				P boat trailers only 3am-11am	8	0	0	0	0	0	2	1	0		0	0	0	0	1	0	1
2a	Lord St (foreshore)	Caims St - end	NW	P disabled	2	0	0	0	0	0	0	0	1		1	1	0	0	0	0	0
2b				-	28	2	3	3	5	7	8	15	12		13	10	15	9	8	8	4
2c			SE	-	13	2	2	2	3	2	3	7	3		4	7	7	4	3	3	4
3a	Lord St (town centre)	Morris St - Caims St	NW	P disabled	1	0	0	0	0	0	0	0	1		0	0	0	0	0	0	0
3b				1/4P 9am-5pm Mon-Fri	1	0	0	0	0	0	0	0	0		0	0	0	0	0	0	0
3c				-	25	19	17	16	15	19	22	21	23		19	20	14	15	13	9	14
3d			SE	-	16	10	11	9	10	11	13	14	13		12	7	8	8	7	9	8
4a	Lord St (GOR)	Morris St - McCue St	NW	Bus Zone	3	3	3	2	2	2	1	0	0		0	0	0	0	0	0	0
4b				-	18	0	0	0	0	0	0	0	2		0	0	0	0	0	0	0
4c			SE	-	23	0	0	0	0	1	1	1	0		0	0	0	0	0	0	0
5	off-street carpark - recreation reserve			-	11	1	0	0	1	2	1	2	1		1	0	1	1	2	1	0
6a	Morris St (GOR)	Lord St - Pitcher St	NE	-	23	0	0	0	2	1	0	0	0		0	2	0	0	0	0	0
6b			SW	-	8	1	1	0	0	0	2	2	4		2	0	4	3	2	1	0
6c				-	22	0	1	1	0	0	0	0	0		0	1	0	0	1	0	0
7a	Morris St (VIS)	Lord St - Tregea St	NE	P disabled	1	0	0	0	0	0	0	0	0		0	0	0	0	0	0	0
7b				-	4	1	2	0	0	0	0	2	1		0	0	1	1	0	1	0
7c			SW	-	5	0	0	0	0	0	1	1	0		0	0	0	0	0	0	0
8a	off-street carpark - Morris St			P disabled	2	0	0	0	0	0	0	0	0		0	0	0	0	0	0	0
8b				-	32	8	9	8	9	12	10	10	10		8	9	8	7	7	6	5
9a	Tregea St	Morris St - Caims St	NW	-	39	2	0	1	1	1	0	0	1		2	1	2	2	3	3	5
9b				-	2	0	0	0	0	0	0	0	0		0	0	0	0	0	0	0
9c				Bus Zone (P 5min)	1	0	0	0	0	0	0	0	0		0	0	0	0	0	0	0
9d			SE	-	18	2	3	4	3	4	7	7	6		6	3	4	4	4	4	3
10a	Caims St (foreshore)	Lord St - Tregea St	NE	P trucks & buses prohibited	10	0	1	1	2	1	5	1	4		3	1	1	1	3	2	1
10b			SW	P disabled	2	0	0	0	0	0	0	0	1		0	0	0	0	0	0	0
10c				-	29	7	13	10	9	10	14	19	22		18	24	14	15	14	11	3
11a	Caims St	Lord St - Hennessy St	NE	-	5	3	3	3	2	2	2	1	1		2	2	1	1	1	1	3
11b			SW	Bus Zone	2	0	0	0	0	0	0	2	0		0	0	0	0	0	0	1
12a	Hennessy St	Morris St - Caims St	NW	-	17	2	2	2	2	2	1	1	0		0	1	2	1	1	0	1
12b			SE	-	17	0	0	0	0	0	1	1	1		0	1	0	0	0	0	0
Total					414	64	73	64	68	78	95	108	108		91	90	83	73	71	59	53
Central Area Total					304	58	66	59	64	73	89	101	101		89	87	77	69	67	58	51

Notes:

Legend: 0-50% 51-70% 71-85% 86-100% >100% occupancy rate



Appendix B Parking Duration Data



Average Duration of Stay					21-D Sat		10-J Fri		23-J Thu		7-F Fri		20-F Thu		
ID	Location	Segment	Side	Restrictions	Supply	Vehs	Avg. Dur	Vehs	Avg. Dur	Vehs	Avg. Dur	Vehs	Avg. Dur	Vehs	Avg. Dur
1a	off-street carpark - end of Lord St		-		14	2	0.8	4	1.9	3	1.0	2	1.8	1	3.0
1b				boat trailers	12	6	2.1	5	1.5	3	0.8	9	0.7	6	0.5
1c				boat trailers 3-11	8	0		1	0.5	5	1.5	3	0.8	2	0.8
2a	Lord St (foreshore)	Cairns St - end	NW	P disabled	2	0		0		0		1	1.0	1	2.0
2b				-	28	71	1.4	81	1.0	51	1.6	40	1.5	35	1.7
2c			SE	-	13	29	1.0	30	1.9	28	1.4	14	1.6	17	1.7
3a	Lord St (town centre)	Morris St - Cairns St	NW	P disabled	1	1	1.0	1	0.5	2	0.5	1	0.5	0	
3b				1/4P	1	4	0.6	5	0.7	8	0.6	1	0.5	0	
3c				-	25	120	1.2	127	1.0	128	1.0	108	1.0	118	1.1
3d			SE	-	16	87	1.0	94	0.9	89	1.2	73	1.2	66	1.1
4a	Lord St (GOR)	Morris St - McCue St	NW	Bus Zone	3	1	0.5	0		0		2	0.5	3	2.7
4b				-	18	0		0		0		1	0.5	2	0.5
4c			SE	-	23	1	1.0	2	0.5	1	0.5	0		2	0.8
5	off-street carpark - recreation reserve				11	13	1.4	16	1.1	5	1.8	10	0.8	10	0.8
6a	Morris St (GOR)	Lord St - Pitcher St	NE	-	23	12	1.3	21	0.7	11	0.8	4	0.6	4	0.6
6b			SW	-	8	15	1.1	20	1.0	18	1.9	9	1.1	6	1.9
6c				-	22	2	0.8	1	0.5	2	1.0	2	0.5	2	0.8
7a	Morris St (VIS)	Lord St - Tregear St	NE	P disabled	1	0		0		0		1	0.5	0	
7b				-	4	3	0.8	20	0.6	16	0.6	14	0.5	5	0.7
7c			SW	-	5	1	1.0	1	1.0	0		2	0.5	1	1.0
8a	off-street carpark - Morris St			P disabled	2	0		0		0		0		0	
8b				-	32	20	2.0	45	2.5	27	3.6	22	3.0	16	4.3
9a	Tregear St	Morris St - Cairns St	NW	-	39	22	1.6	34	2.7	30	1.6	0		8	1.1
9b				-	2	0		4	0.5	1	0.5	2	0.5	0	
9c				Bus Zone	1	2	0.5	6	0.5	7	0.6	3	0.5	0	
9d			SE	-	18	22	2.9	23	2.7	40	1.5	18	1.9	16	2.2
10a	Cairns St (foreshore)	Lord St - Tregear St	NE	P	10	36	0.8	56	0.8	35	0.8	26	0.7	16	0.7
10b			SW	P disabled	2	0		2	0.5	1	1.0	0		1	0.5
10c				-	29	138	0.9	151	0.9	135	0.9	94	0.9	89	1.0
11a	Cairns St	Lord St - Hennessy St	NE	-	5	9	1.7	12	1.7	10	2.6	8	2.5	6	2.3
11b			SW	Bus Zone	2	6	0.7	5	0.6	4	0.9	3	0.7	2	0.5
12a	Hennessy St	Morris St - Cairns St	NW	-	17	10	3.7	9	2.7	3	1.7	3	4.8	3	3.0
12b			SE	-	17	0		5	3.5	1	2.5	0		2	1.0
Total					414	633	1.2	781	1.2	664	1.3	476	1.2	440	1.3