



CORANGAMITE
SHIRE

Electric Line Clearance Management Plan

Camperdown
2024-2025

TABLE OF CONTENTS

Appendices	4
Management Plan Particulars	5
Revision List / Document Control	5
Regulation 9. Preparation of Management Plan	6
Regulation 9(4)(a). Name, address and telephone number of the responsible person	6
Regulation 9(4)(b). Name, position, address and telephone number of the individual who was responsible for the preparation of the management plan	7
Regulation 9(4)(c). Name, position, address and telephone number of the persons who are responsible for carrying out the management plan	7
Regulation 9(4)(d). The telephone number of a person who can be contacted in an emergency that requires clearance of a tree from an electric line that the responsible person is required to keep clear of trees	7
Regulation 9(4)(e). Objectives of the plan.....	7
Compliance to these commitments will be determined through regular audits (both desk top and on site while cutting is being undertaken) conducted by Councils Assets Engineer or Works Manager.....	8
Regulation 9(4)(f). The land to which the management plan applies by the inclusion of a map.....	8
Regulation 9(4)(g). any hazardous bushfire risk areas and low bushfire risk areas in the land referred to in paragraph (f) (as indicated on the map).....	9
Regulation 9(4)(h).The location of each area that the responsible person knows contains a tree that the responsible person may need to cut or remove to ensure compliance with the Code and that is:	10
Regulation 9(4)(i). The means which the responsible person is required to use to identify a tree specified in paragraph 4(h)(i), (ii) or (iii)	11
Regulation 9(4)(j)(i)(ii). The management procedures that the responsible person will adopt to ensure compliance with the code,	12
Regulation 9(4)(k). The procedures to be adopted if it is not practicable to comply with the requirements of AS 4373 while cutting a tree in accordance with the Code.....	20
Regulation 9(4)(l). A description of each alternative compliance mechanism in respect of which the responsible person has applied, or proposes to apply, for approval under clause 31 of the Code	21
Regulation 9(4)(m). The details of each approval for an alternative compliance mechanism	21
Regulation 9(4)(n). A description of the measures that must be used to assess the performance of the responsible person under the management plan	22
Regulation 9(4)(o). Details of the audit processes that must be used to determine the responsible person's compliance with the Code.....	22
Regulation 9(4)(p). The qualifications and experience that the responsible person must require of the persons who are to carry out the inspection, cutting or removal of trees in accordance with the Code	24
Regulation 9(4)(q). Notification and consultation procedures	25
Regulation 9(4)(r). Dispute resolution procedures	26
Regulation 10. Obligations Relating to the Management Plan.....	29
Regulation 10(6). The responsible person must ensure that a copy of the current management plan is published on the responsible person's Internet site.	29
Regulation 11. Exemptions	29

Regulation 11(2)(a). A responsible person who receives an exemption must ensure that a copy of the exemption is published on the responsible person’s Internet site	29
Clearance Responsibilities	29
Duty relating to the safety of cutting or removal of trees close to an electric line.....	29
Schedule 1, Part 2, Division 1(3). Responsible person must keep minimum clearance space clear of trees	29
Schedule 1, Part 2, Division 1(9). Responsible person may cut or remove a hazard tree	30
Schedule 1, Part 2, Division 4. Additional duties of responsible persons	30
Division 4(20). Duty relating to the safety of cutting or removal of trees close to an electric line	30
Appendix 1(A).....	31
Appendix 1(B).....	32
Appendix 1(C)	35
Appendix 2	55
Appendix 3	58
Appendix 4	59
Appendix 5	60

Appendices

Appendix No.	Document No.	Description
Appendix 1A	2442379	<i>Camperdown Township Street Trees Under Electric Lines Map with Heritage Overlay.</i>
Appendix 1B	2442452	<i>Heritage Tree Details Listing Heritage Trees in the Clearance Area.</i>
Appendix 1C	2442348	<i>Camperdown Township Street Trees Under Electric Lines Map</i>
Appendix 1D	2442413	<i>Street Trees Details Listing</i>
Appendix 2	2784279	<i>Annual KPI Audit Form</i>
Appendix 3		Annual Tree Inspection and Pruning Audit Report
Appendix 4	2442632	Map of Camperdown Township Declared Area and Electric Lines Locations
Appendix 5		Example Public Notice

Note: Appendices contain key records (forms and documents) that are generated by the plan. Some Appendices may not contain documents or completed records at time of issue as they may be dependent on work being done during the program. These records will be updated and placed in the Appendices as they are generated for the program and will be available as applicable to the time of any compliance audits.

Management Plan Particulars

Document:	ELCMP
Issue Number:	3
Authorised by:	 David Rae, Chief Executive Officer
Authorisation date:	28 November 2024

Revision List / Document Control

The following Revision List records the issues and revisions of the document. For convenience, the nature of the revision is briefly noted. Revisions to the Electric Line Clearance Management Plan (ELCMP) are made as required to reflect changes upon which this plan is based.

Revisions are made by replacement of single pages, sections or re-issue of the complete ELCMP as required.

Section	Issue	Revision Details	Date

Regulation 9. Preparation of Management Plan

The following sections are as per Regulation 9 of the Electricity Safety (Electric Line Clearance) Regulations 2020.

Regulation 9(2) - A responsible person that is not a major electricity company, before 31 March in each year, must prepare a management plan relating to compliance with the Code for the next financial year.

The Corangamite Shire Council Electric Line Clearance Management Plan Commences on 1 July each year and concludes on 30 June of the following year. The management plan relating to compliance with the Code for the next financial year will be reviewed before 31 March each year by the responsible person listed in this plan.

The review will include the revision and update of:

- The relevant Regulations, Codes, Standards are updated to the latest version, as required
- All relevant schemes, registers & lists
- Any internal processes and procedures are updated to ensure compliance with any regulatory changes
- Council's performance in maintaining compliance during the previous year
- Any changes required to improve performance

The person named at 9(4)(b) will be responsible for providing the plan to Energy Safe Victoria (ESV) on request within 14 days or a period specified by ESV.

The plan is available at any time, the plan is kept on Council's document management system and the Shire's website. The document version is controlled as indicated in the footer of the document and the revision list within the document.

The scope of works for this ELCMP is to inspect, manage and maintain clearance of vegetation from Powercor's Electricity Network, including notification, consultation and negotiation with affected persons in accordance with the Electricity Safety Act 1998 and the Electricity Safety (Electric Line Clearance) Regulations 2020, while maintaining the Council's tree assets. There are a total of 199 power poles located within the ELCMP area. The majority of these poles exist within the Low Bushfire Risk Area however 86 poles are within the High Bushfire Risk Area.

The responsible person (Manager Environment and Emergency) named in (4b) will ensure that Council's ELCMP is prepared before 31 March each year and submitted to ESV within 14 days of request.

Regulation 9(4)(a). Name, address and telephone number of the responsible person

Name of Council:	Corangamite Shire Council
Address:	181 Manifold St Camperdown 3260
Chief Executive Officer:	David Rae
Telephone:	03 5593 7100
e-mail:	shire@corangamite.vic.gov.au

Regulation 9(4)(b). Name, position, address and telephone number of the individual who was responsible for the preparation of the management plan

Name:	Belinda Bennett
Position (Unit Director):	Acting Manager Environment and Emergency
Address:	181 Manifold St Camperdown 3260
Telephone:	0477 101 521
e-mail	belinda.bennett@corangamite.vic.gov.au

Regulation 9(4)(c). Name, position, address and telephone number of the persons who are responsible for carrying out the management plan

Name:	John Kelly
Position:	Manager Asset Planning
Address:	181 Manifold St Camperdown 3260
Telephone:	03 55937 100
e-mail	john.kelly@corangamite.vic.gov.au

Regulation 9(4)(d). The telephone number of a person who can be contacted in an emergency that requires clearance of a tree from an electric line that the responsible person is required to keep clear of trees

Telephone:	0407 462 426
Position:	Corangamite Shire Council – 24/7 After Hours Phone

Regulation 9(4)(e). Objectives of the plan

The following are identified as the key objectives of this plan to fulfil Council's commitment to maintain the space between the vegetation and powerlines (clearance space) under its responsibility and fulfil its duties as set out in the Electricity Safety (Electric Line Clearance) Regulations 2020:

- Compliance with the Electricity Safety (Electric Line Clearance) Regulations 2020 and Code of Practice;
- Electrical safety;
- Minimise fire starts as a result of contact between vegetation and electricity network;
- Continuity of electricity supply to Council residents;
- Public safety;
- Provision of a safe workplace for employees and service providers;
- Vegetation management to maximise environment and amenity value of the Council's trees;
- Protection of areas of important vegetation; and
- Community satisfaction with the manner the works required are carried out.

Council has developed a set of Key Performance Indicators (KPIs) to monitor the overall vegetation management performance. The responsible person for carrying out the works will ensure that the objectives of the plan are being implemented and actioned by annually reviewing auditing performance against the following KPIs:

- Annual inspection of 10% of vegetation in the vicinity of electric lines that are the responsibility of Council;

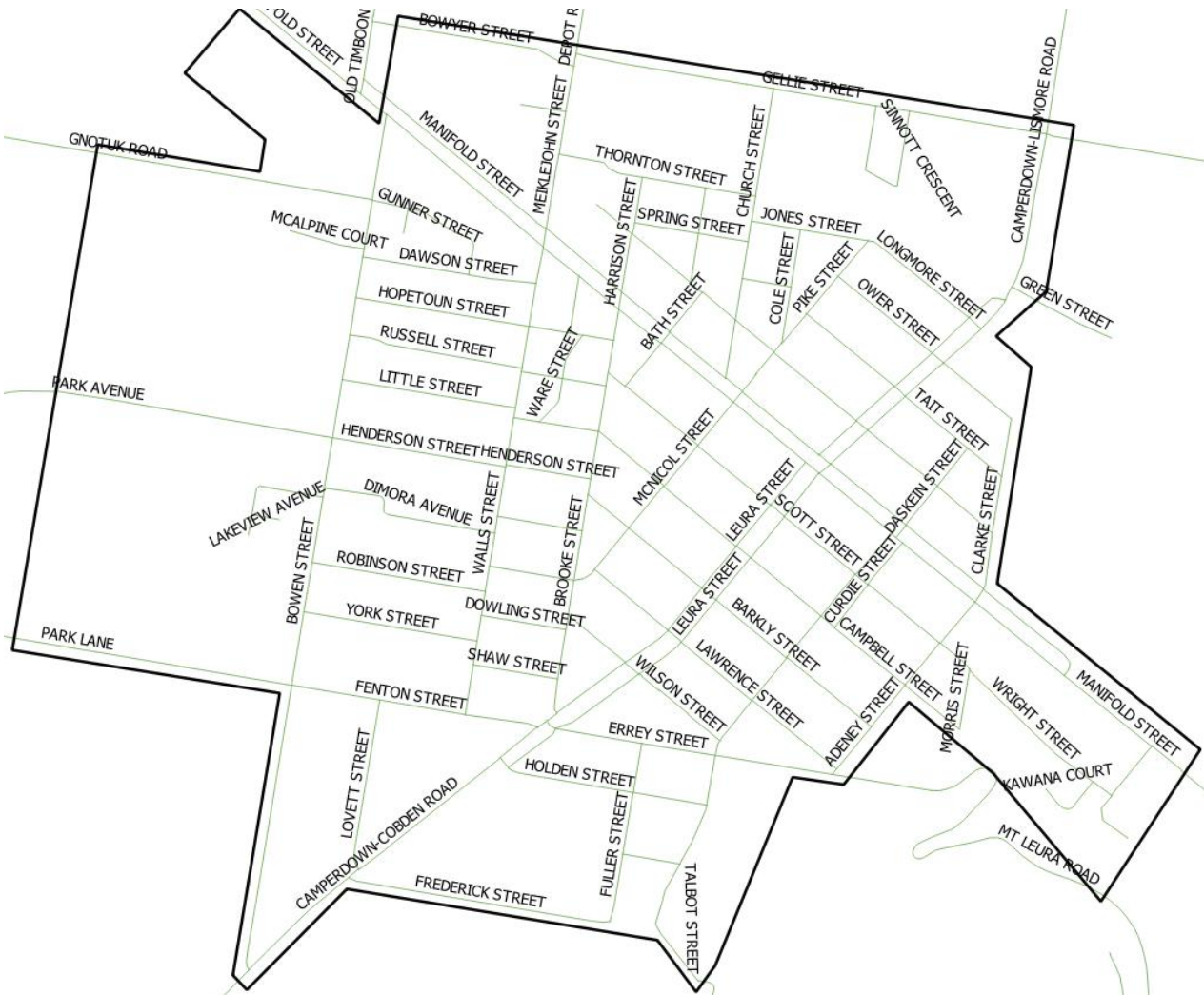
- Ensuring contractors have the correct training to undertake the works, see paragraph 9(4)(p);
- Annual review of Safe Operating Procedures (SOP's) and the use of Safe Work Method Statements (SWMS);
- Contractor induction through the Council induction program;
- Ensuring contractors have appropriate qualifications, training, experience, insurances and procedures in place;
- Pruning is undertaken in accordance with AS4373-2007 Pruning of Amenity trees as a minimum;
- Clear identification of important vegetation through Council's internal processes
- Maintain 3 monthly inspection frequency and maintenance schedules;

Compliance to these commitments will be determined through regular audits (both desk top and on site while cutting is being undertaken) conducted by Councils Assets Engineer or Works Manager.

Regulation 9(4)(f). The land to which the management plan applies by the inclusion of a map

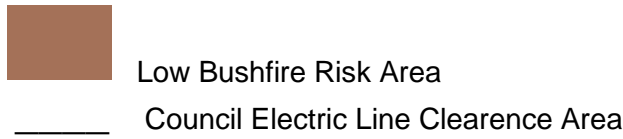
Declared Area Boundary

The Corangamite Shire covers an area of 4,600 square kilometers, however only the town of Camperdown has a declared area affected by this plan. This is illustrated below in Figure 1 which provides the outline of the declared area overlaid by the town of Camperdown Map. The declared area map is based on copies of the ESV database maps (<https://eservices.esv.vic.gov.au/LineClearance/>) and supplied by Powercor. The declared area includes over 995 power poles of which 86 poles are located in the High Bushfire Risk Area and the remaining poles are located in a Low Bushfire Risk Area.



Regulation 9(4)(g). any hazardous bushfire risk areas and low bushfire risk areas in the land referred to in paragraph (f) (as indicated on the map).

The CFA review and assign High and Low Bushfire Risk as prescribed by Section 80 of the Electricity Safety Act 1998 approximately every 3 years. Part of that process includes liaison with Council and notification following inclusion in the Government Gazette. Below is the Town of Camperdown Map with the CFA low bushfire area shaded in brown.



Note: non-shaded areas within the Electric Line Clearance Area are High Bushfire Risk Areas

Regulation 9(4)(h). The location of each area that the responsible person knows contains a tree that the responsible person may need to cut or remove to ensure compliance with the Code and that is:

For trees defined within the following three categories; Council will, as far as practicable, not cut a tree more than is necessary to comply with the Regulations. We will not remove any of these trees unless it is required to ensure compliance or make an unsafe situation safe. We may remove one of these trees if a suitably qualified Arborist has assessed the tree and advise trimming the tree would make the tree unhealthy or unviable. These conditions apply to all known trees that are identified here and any further trees that may be found to meet the criteria during the period of this plan.

The location of areas containing trees which need to be cut or removed to ensure compliance with code and they are:

i. Native;

A large old Manna Gum in the Curdie Street road reserve at the corner of Scott Street is situated away from power lines enough to avoid pruning, however regular inspections are made to ensure this remains the case. An exemption exists in the Planning Scheme which permits the pruning of the tree to meet the requirements for electric line clearance.

There are no other naturally occurring native trees under electric lines in the declared area of Camperdown.

Some native species have been used in the street tree planting program and are listed in Appendix (3) – Street Tree Details Listing, this is an extract from Council's Urban Street Tree Register.

Locations of all trees are (GPS) recorded in Council's Urban Street Tree Register which is provided to Council's Electric Line Clearance Contractor annually. If additional trees are located during the annual review process, these will be updated within the register.

ii. Listed in the planning scheme to be ecological, historical or aesthetic significance;

There are no areas of trees in the town of Camperdown that have been specified in the Planning Scheme to be of botanical or ecological significance that need to be pruned to ensure compliance with the Code of Practice.

Some trees listed in the Urban Street Tree register fall within the Camperdown Heritage Overlay documented in the Corangamite Shire's Planning Scheme. Council will ensure that Contractors are informed of the Heritage Overlay and require them to apply sensitive pruning methods to protect that vegetation while achieving compliance with the Code.

iii. A tree of cultural or environmental significance;

The Heritage Overlay is in place for the value of the buildings contained within it. The only specific culturally significant vegetation listed within this overlay is the Old Manna Gum mentioned above in this Plan which has an exemption for pruning if required.

A map of the declared area showing the location of trees under electric lines within the heritage overlay is attached as *Appendix 1 (A) – Camperdown Township Street Trees under Electric Lines map with Heritage Overlay*.

A detailed listing of Heritage Trees in the clearance area is contained in Appendix 1 (B) – Heritage trees details listing.

Tree of environmental significance means that:

- a. Flora or a habitat of fauna listed as threatened in accordance with section 10 of the *Flora and Fauna Guarantee Act 1988*; or
- b. Flora listed in the Threatened Flora List with a conservation status in Victoria of “endangered” or “vulnerable”; or

- c. A habitat of fauna which is
 - i. Listed in the Threatened Invertebrate Fauna List with a conservation status in Victoria of “vulnerable”, “endangered” or “critically endangered” ; or
 - ii. Listed in the Threatened Vertebrate Fauna List with a conservation status in Victoria of “vulnerable”, “endangered” or “critically endangered”.

There are no areas containing trees in the town of Camperdown that have been specified in the Planning Scheme to be the habitat of rare or endangered species that need to be pruned to ensure compliance with the Code of Practice.

Appendix 1 (C) Camperdown Township Street Trees under Electric Lines Map is a map of Street trees under powerlines and *Appendix 1 (D)- Street Trees Details Listing* is a listing showing Street tree species present and other key tree information. Appendix 4 Map of Camperdown Township Declared Area and Electric Lines Locations.

Regulation 9(4)(i). The means which the responsible person is required to use to identify a tree specified in paragraph 4(h)(i), (ii) or (iii)

Council has engaged qualified Arborist services to identify trees listed in paragraph (h) of the regulations. If there was any tree of cultural or environmental significance, the Council would refer to:

Heritage Register within the meaning of the Heritage Act (<http://vhd.heritagecouncil.vic.gov.au/>);

Council will be notified by Victorian Aboriginal Heritage Council of any changes to the Victorian Aboriginal Heritage Register. The Victorian Aboriginal Heritage Register is not a publicly accessible register because it contains culturally sensitive information. Applicants may apply online for access or advice using the Aboriginal Cultural Heritage Register and Information System (ACHRIS - <https://achris.vic.gov.au/#/dashboard>) established **under section 144 of the** Aboriginal Heritage Act 2006;

The National Trust has a database of trees that are accessible to the public.

<http://www.trusttrees.org.au;>

The online mapping page includes most relevant town planning overlays.

<https://www.planning.vic.gov.au/planning-schemes>

- Flora or a habitat of fauna listed as threatened in accordance with section 10 of the Flora and Fauna Guarantee Act <https://www.environment.vic.gov.au/conserving-threatened-species/flora-and-fauna-guarantee-act-1988> ; or
- Flora listed in the Threatened Flora List https://www.environment.vic.gov.au/data/assets/pdf_file/0021/50448/Advisory-List-of-Rare-or-Threatened-Plants-in-Victoria-2014.pdf with a conservation status in Victoria of "endangered" or "vulnerable"; or
- A habitat of fauna which is listed in the Threatened Invertebrate Fauna List https://www.environment.vic.gov.au/data/assets/pdf_file/0016/50452/Advisory_List_of_Threatened_Invertebrate_Fauna_2009_FINAL_Sept_2009.pdf with a conservation status in Victoria of "vulnerable", "endangered" or "critically endangered". and
- Threatened Vertebrate Fauna List ([https://www.environment.vic.gov.au/data/assets/word_doc/0015/50451/Advisory-List-of-Threatened-Vertebrate-Fauna_FINAL-2013.doc.](https://www.environment.vic.gov.au/data/assets/word_doc/0015/50451/Advisory-List-of-Threatened-Vertebrate-Fauna_FINAL-2013.doc))

The trees identified in the above Acts, Lists or Registers are reviewed annually by Council to ensure their accuracy and updated information provided to Electric Line Clearance Personnel.

Regulation 9(4)(j)(i). The management procedures that the responsible person will adopt to ensure compliance with the code, which must include details of the methods to be adopted for managing trees and maintaining a minimum clearance space as required by the Code

There are 579 street trees in the declared area that have powerlines above or nearby which may require clearance pruning.

Inspection/pruning programs and schedules

Council has determined that the electric line clearance inspection and pruning will be undertaken every three months for maintaining the statutory clearance space between vegetation and powerlines. This period provides the greatest opportunity to maximise the amenity value of its street trees. The contractor is not permitted to undertake vegetation clearance which also less frequent pruning than the three month cycle. This will be managed as a performance measure under the Council contract for these works. A qualified and trained contractor has been appointed to undertake quarterly inspections and provide a report of findings to Council's Responsible Person. The contractor then allows the required notification period before commencing works to trim identified trees.

Works and any pruning requirements are to ensure the street trees remain clear of electrical lines. Each inspection shall be fully documented and each street visited shall be identified. Each inspection shall allow for any potential regrowth entering the clearance space as well as sag and sway data to be obtained from power company and kept for a minimum of 5 years. All data to be provided to approved contractor.

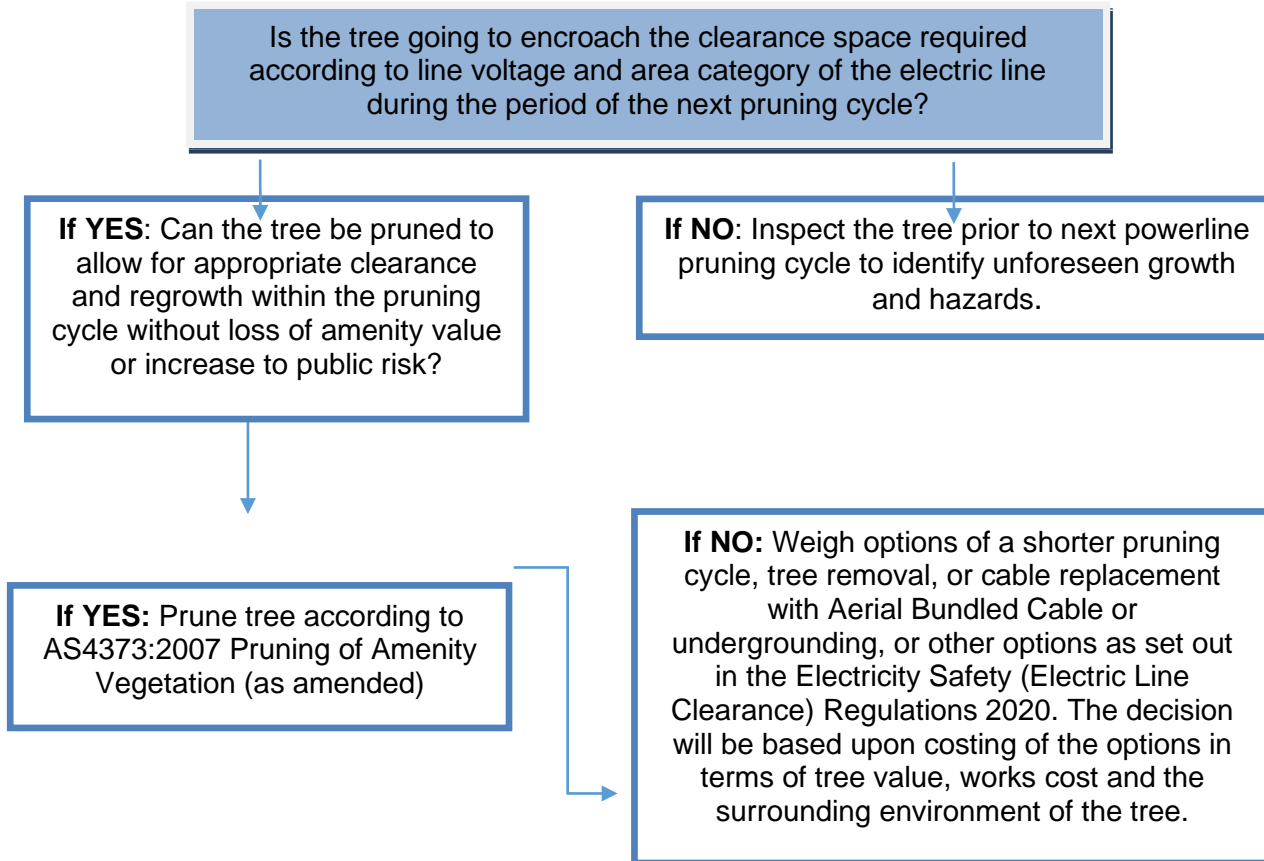
Council will consult with affected persons to remove inappropriate species from under electrical lines where possible. As part of any future Streetscape Strategy Before deciding to plant a tree near electric lines, Council will consult the reference document 'Powerlines and Vegetation Management' and 'Your Guide to Planting near Electric Lines'.

http://www.esv.vic.gov.au/wpcontent/uploads/2016/12/ESV_Veg_Management_Brochure.pdf

Regulation 9(4)(j)(ii) (A). must specify the method for determining an additional distance that allows for conductor sag and sway. (B) may provide for different additional distances to be determined for different parts of an electric line span;

The Clearance space to be maintained for the centre 2/3 of spans is specified in Schedule 2 of the Regulations. The pruning contractor is required to assess the length of the spans to determine the required clearance.

The following outlines the decision-making process with regard to maintaining line clearance:



During the inspection, trees which are in breach of the Code will be identified. In addition, any trees which are determined to be likely to breach the Code in the next 3 months are also to be identified.

In making these evaluations and before deciding on the most appropriate method, due consideration is given to the site's specifics, including:

- the significance of the site as a natural habitat of endangered species of both flora and fauna;
- relocation of the powerline from the vegetation evaluating the savings achieved by avoiding the recurrent costs of cutting and assessing the benefits of implementing available and practicable alternative construction methods;
- the significance and public value of the site's aesthetics;
- the impact on the tree's amenity and utility value if subjected to pruning versus removal;
- the sites suitability to accept more appropriate species as replacements;
- the environmental impact of proposed works;

- determining the most appropriate method of actioning the offending vegetation concerned;
- appropriate planning and scheduling;
- identification and quantification of equipment and accredited personnel required;
- any hazards outside the clearance and regrowth spaces that may require assessment or correction;
- funding;
- community and customer consultation; and
- compiling a data base in conjunction with the Distribution Company that can be used in future years in determining costs associated with different clearance techniques.

Each inspection shall be documented and each street visited shall be recorded in Council's approved documentation process/program.

All pruning works will be undertaken in accordance the Electricity Safety (Electric Line Clearance) Regulations 2020, AS4373:2007 Pruning of Amenity Trees and best practice methods.

Where an inspector deems it likely that cutting is not likely to meet the requirements of AS4373, the inspector will consult with the Director Works and Services to seek approval on the pruning method to be undertaken.

Emergency Cutting and Pruning

Council or its contractor will undertake emergency cutting and pruning activities in the following situations:

- Where a tree is identified as encroaching the clearance space due to unanticipated growth;
- As a result of a tree falling or becoming damaged so that it requires cutting or removal to maintain the required clearance space; or
- Where a tree has been assessed by a suitably qualified arborist and confirmed to have an imminent likelihood of contacting the electric lines having regard to foreseeable local conditions.

As part of such works Council will record where and when the cutting or removal was undertaken, identify why the cutting/removal was required and record when the last inspection of the tree occurred. All records will be filed at the Council office on Councils document management system for a period not less than 5 years.

Council or its contractor will undertake its urgent works in accordance with the Regulations and not remove or cut any more than one metre from the minimum clearance space around the electric line. Ongoing monitoring by visual assessment of the regrowth rates of Council's trees encroaching powerlines will be undertaken to ensure continued compliance.

Notified Work Required/Conducted

Locations of vegetation, notified by the Distribution Company or any other interested party as requiring attention to maintain powerline clearance which is the responsibility of the Municipality will be assessed by the Responsible Person as soon as practical following receipt of the notice.

When applicable, the Responsible Person will convey to the Cutting Crews, the site of any prunings notified by the Distribution Company as being the result of emergency clearing. The work of removing the prunings will be programmed by the Cutting Crew.

Council will notify the Distribution Company or other stakeholder upon completion of the clearing. Records of these reports and clearing shall be maintained as per Council's document management procedure.

Habitat for Threatened Fauna

Council's declared areas are comprised predominantly of urban streets with vegetation which has been planted. Council currently doesn't have habitat trees within its declared areas that require electrical line clearance maintenance.

If it is found that a tree contains occupied habitat the following process will be implemented to manage the tree/s;

- As soon as a tree is identified as the habitat of a possibly threatened species, the operator must stop work and inform their supervisor, or Council, and seek clarification of the threatened species and the breeding season of that species.
- Works will be scheduled outside of breeding season where practicable.
- Translocation of the fauna if not practical to undertake outside of the breeding season.
- Cutting only to occur when not practicable to cut or remove outside the breeding season.
- If any occupied habitat is found it, details inc. Location etc. will be recorded in Council's Works Recording system.

Cutting or removal of habitat for threatened fauna is only to occur to achieve Code compliance or to make an unsafe situation safe.

Managing and recording regrowth

Council will observe and record the rate of growth of species under the growing conditions, which prevail in the Municipality and apply these observations when determining the extent and frequency of pruning.

The following growth rates have been assumed by Council.

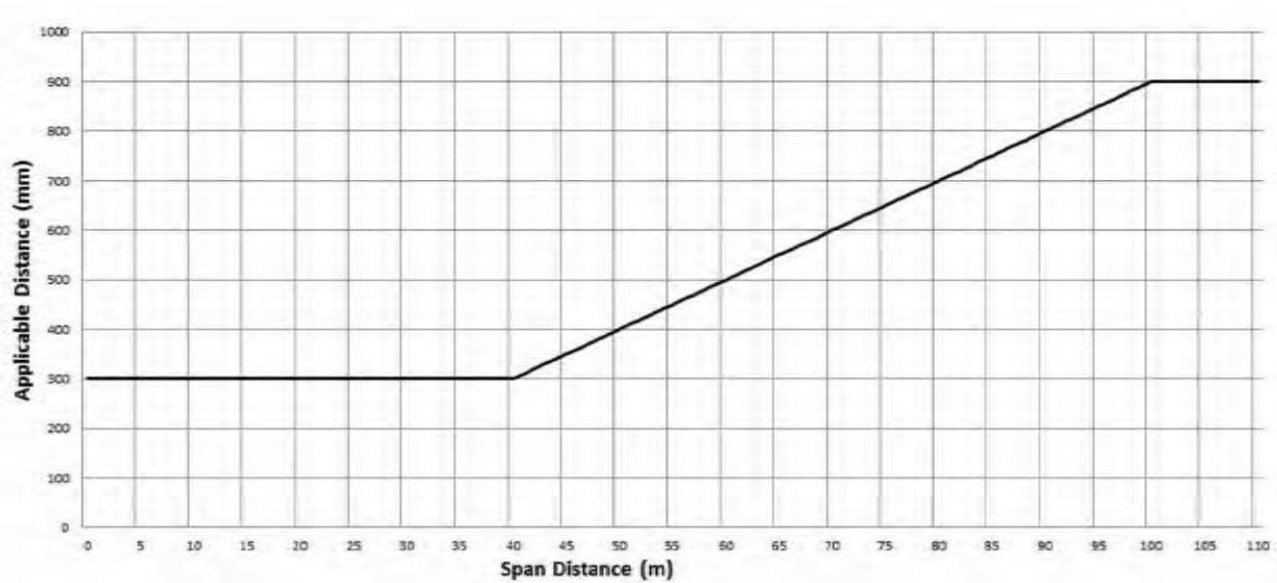
Species	Annual Estimated Growth Rate Side	Annual Estimated Growth Rate Under
Eucalypts	.2m	.8m
Cypress	.2m	.5m
Other Exotics	.2m	.6m

Managing the Clearance Space

The minimum clearance space required is detailed under Schedule 1 and 2 of the *Electricity Safety (Electric Line Clearance) Regulations 2020 – Code of Practice for Electric Line Clearance* and summarised in the following tables.

Minimum Clearance Spaces Surrounding a Powerline (All Areas) Aerial Bundled Cable or Insulated Cable

MINIMUM CLEARANCE SPACES IN ALL DIRECTIONS	
Near the pole	300mm
Centre 2/3rds	Refer to Graph 1



GRAPH 1

The clearances in this section allow for sag and sway of the conductors. Refer to Schedule 1 and 2 of the Code for further details. The direction of the clearance space from around the conductors are illustrated below

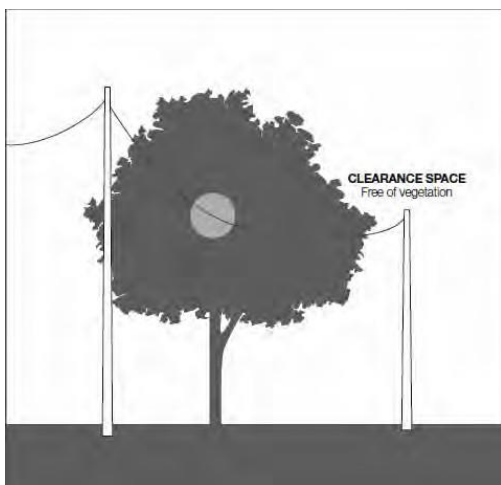
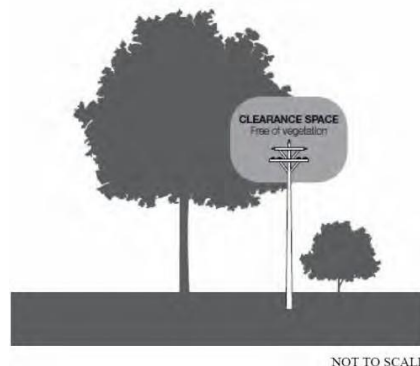


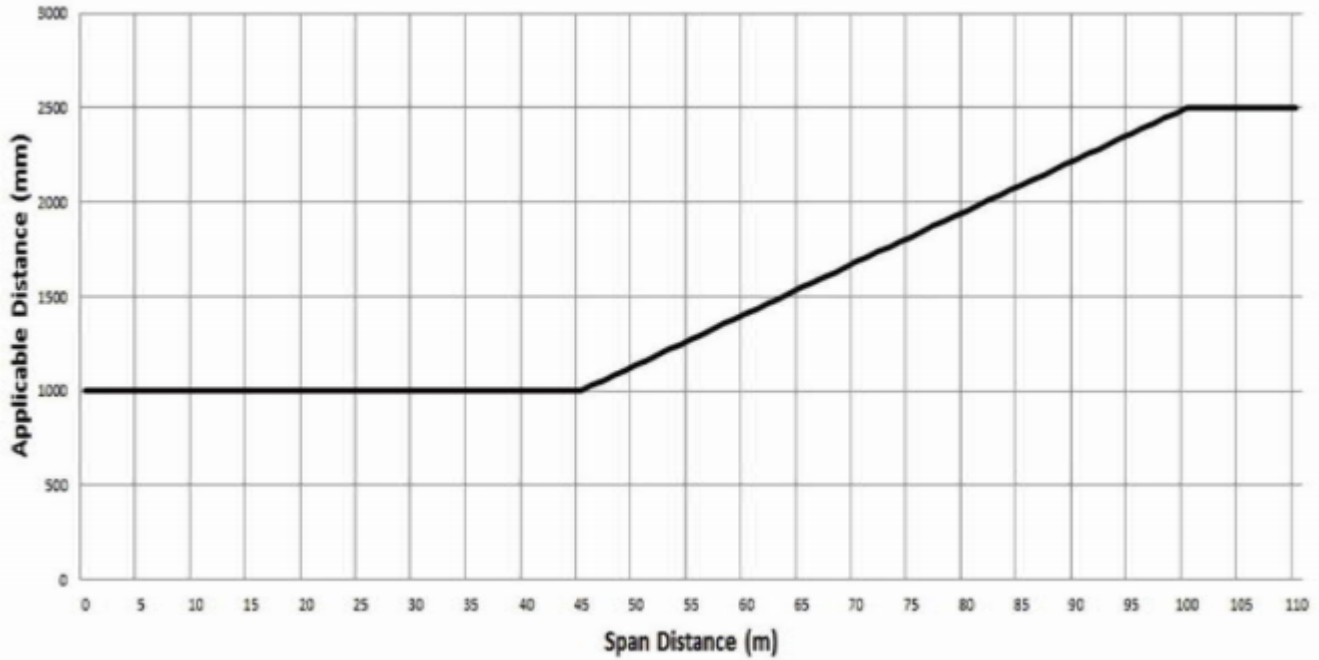
FIGURE 3—INSULATED ELECTRIC LINES IN ALL AREAS AND UNINSULATED HIGH VOLTAGE ELECTRIC LINES (OTHER THAN 66 000 VOLT ELECTRIC LINES) IN LOW BUSHFIRE RISK AREAS

Clauses 24 and 26, Graphs 1 and 3



Minimum Clearance Spaces Surrounding an Uninsulated Low Voltage Powerline in LBRA

MINIMUM CLEARANCE SPACES IN ALL DIRECTIONS	
Near the pole	1000 mm*
Centre 2/3rds	Refer to Graph 2

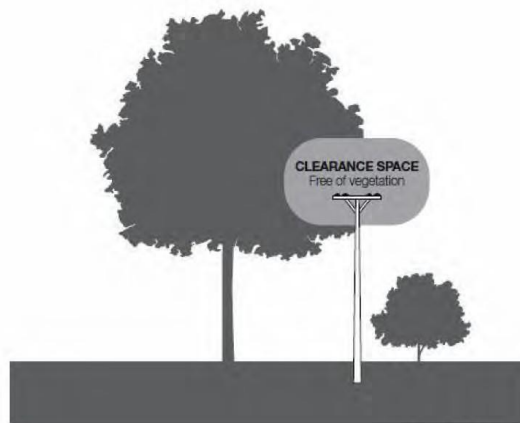


GRAPH 2

The clearances in the above graph allows for sag and sway for spans up to 100m. For Spans greater than 100m an allowance for sag and sway will be calculated as required in Schedule 1 and 2. Once preliminary calculations have been made, Council will seek information from Powercor and refer to 4j(A)(B) and provide to the relevant persons.

FIGURE 4—UNINSULATED LOW VOLTAGE ELECTRIC LINE IN A LOW BUSHFIRE RISK AREA

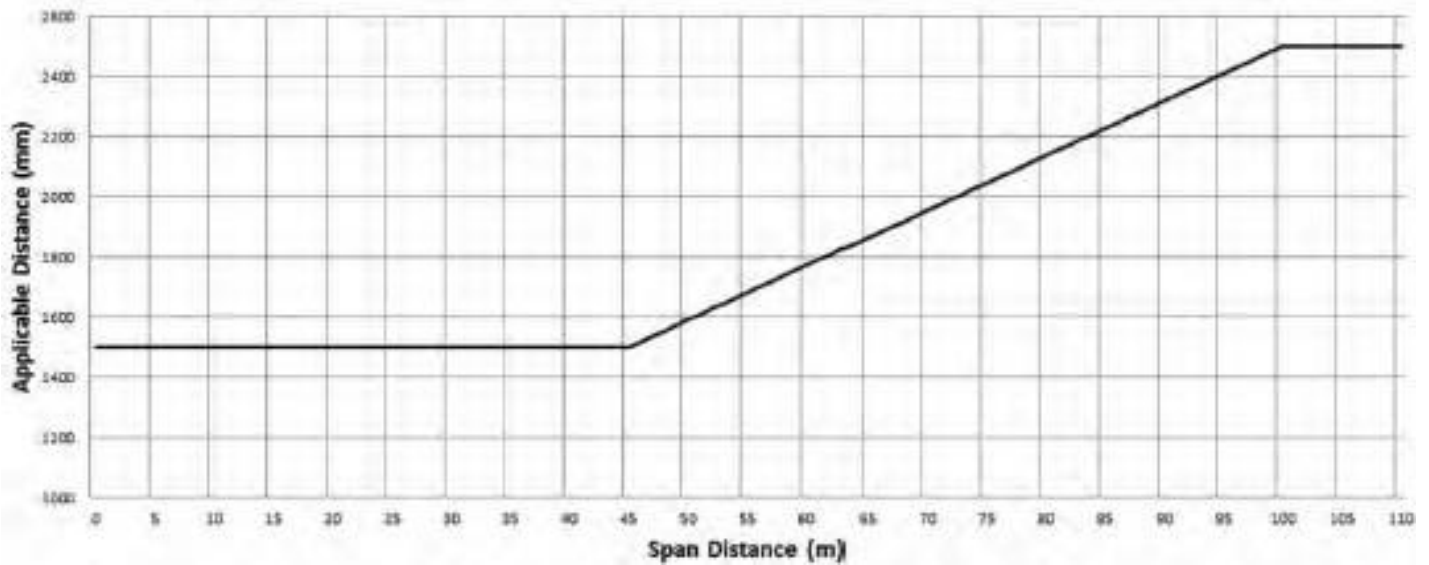
Clause 25, Graph 2



NOT TO SCALE

**Minimum Clearance Spaces Surrounding a High Voltage Uninsulated Electric Line
(other than 66kv electric lines) in LBRA**

MINIMUM CLEARANCE SPACES IN ALL DIRECTIONS	
Near the pole	1500 mm*
Centre 2/3rds	Refer to Graph 3

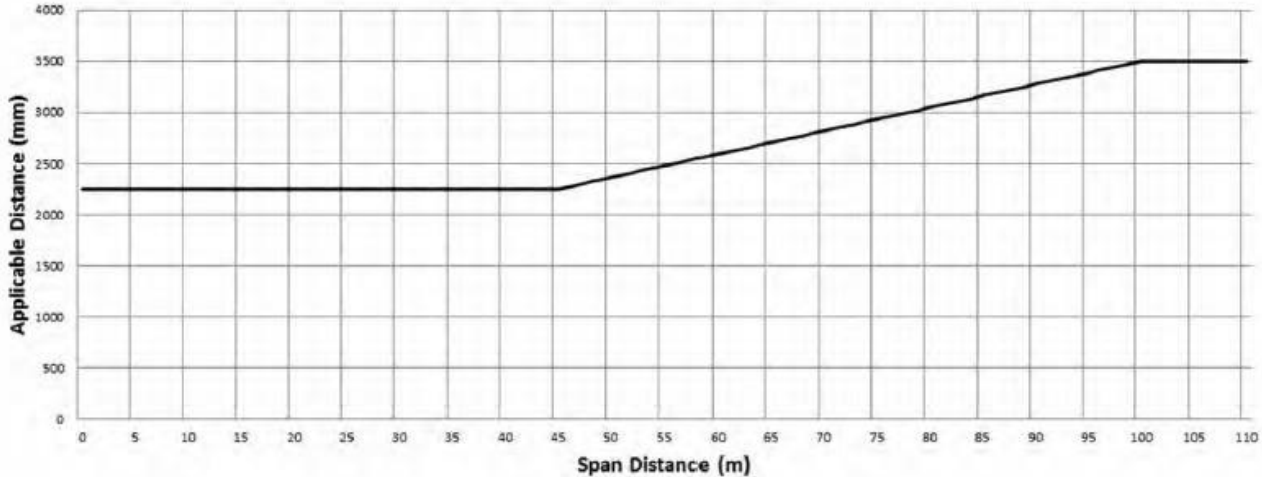


GRAPH 3

The clearances in the above graph allows for sag and sway for spans up to 100m. For Spans greater than 100m an allowance for sag and sway will be calculated as required in Schedule 1 and 2. Once preliminary calculations have been made, Council will seek information from Powercor and refer to 4j(A)(B) and provide to the relevant persons.

Minimum Clearance Space Surrounding a Powerline Uninsulated 66kv in LBRA

MINIMUM CLEARANCE SPACES IN ALL DIRECTIONS	
Near the pole	2250 mm*
Centre 2/3rds	Refer to Graph 4



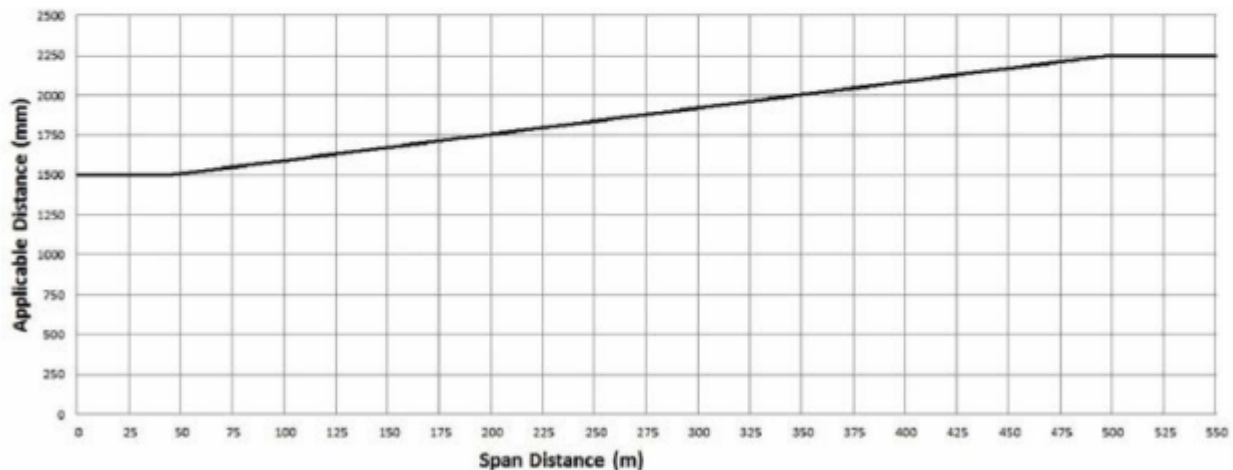
GRAPH 4

The clearances in the above graph allows for sag and sway for spans up to 100m. For Spans greater than 100m an allowance for sag and sway will be calculated as required in Schedule 1 and 2. Once preliminary calculations have been made, Council will seek information from Powercor and refer to 4j(A)(B) and provide to the relevant persons.

**-MINIMUM CLEARANCE SPACES SURROUNDING A POWERLINE—
UNINSULATED LOW VOLTAGE AND HIGH VOLTAGE (Other than 66kV Electric Line) in
HAZARDOUS BUSHFIRE RISK AREA**

MINIMUM CLEARANCE SPACES IN ALL DIRECTIONS	
Near the pole	1500 mm*
Centre 2/3rds	Refer to Graph 5

GRAPH 5

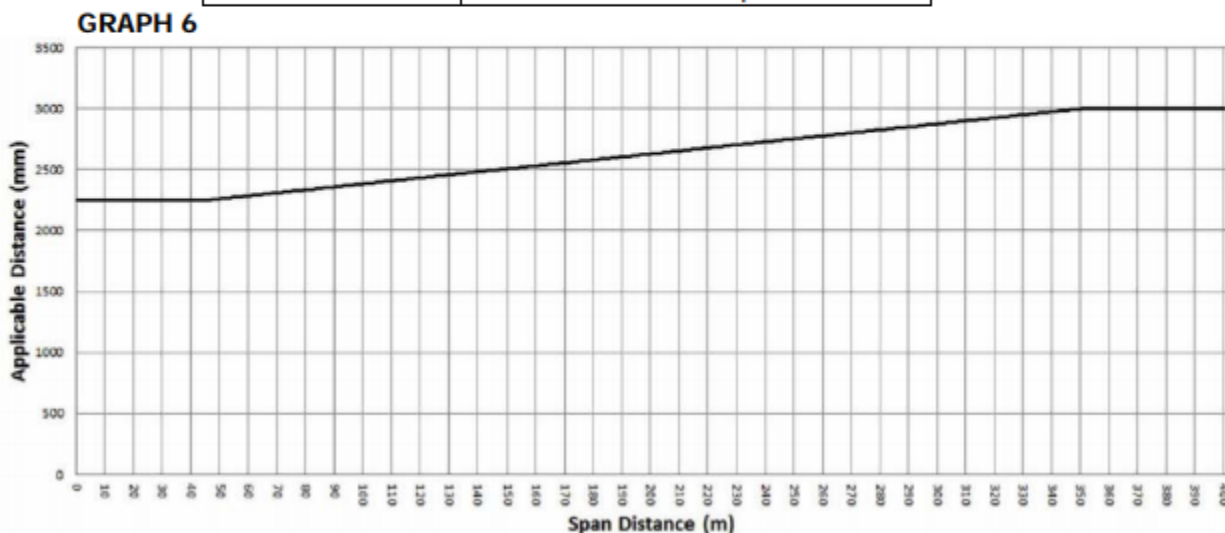


Vegetation clearances are included in Schedule 2, Graph 5 for spans less than 45m in HBRA. For

Spans greater than 45m an allowance for sag and sway will be calculated as required in Schedule 1 and 2. Once preliminary calculations have been made, Council will seek information from Powercor and refer to 4j(A)(B) and provide to the relevant persons.

**MINIMUM CLEARANCE SPACES SURROUNDING A POWERLINE—
UNINSULATED 66kV ELECTRIC LINE in
HAZARDOUS BUSHFIRE RISK AREA**

MINIMUM CLEARANCE SPACES IN ALL DIRECTIONS	
Near the pole	2250 mm*
Centre 2/3rds	Refer to Graph 6



Vegetation clearances are included in Schedule 2, Graph 6 for spans less than 45m in HBRA. For Spans greater than 45m an allowance for sag and sway will be calculated as required in Schedule 1 and 2. Once preliminary calculations have been made, Council will seek information from Powercor and refer to 4j(A)(B) and provide to the relevant persons.

Any identified High Bushfire Risk Areas (HBRA) within the declared area will be inspected at the same time as the quarterly inspections. Follow up works will be completed prior to the declared bushfire season.

Regulation 9(4)(k). The procedures to be adopted if it is not practicable to comply with the requirements of AS 4373 while cutting a tree in accordance with the Code

The Municipal Association of Victoria advises Council to ensure the latest version of AS4373 is being referenced.

Corangamite Shire Council strives for its internal staff and contractors to meet the pruning standard set out in AS4373 as far as reasonably practicable while completing cutting activities to clear vegetation from electrical assets.

Reasonably practicably in relation to AS4373 means that which is, or was at a time, reasonably able to be done in relation to ensuring continued tree health and future tree safety, considering and weighing up all relevant matters including:

1. The likelihood of the hazard or the risk concerned occurring – will the action create a defect, hazard, loss of tree health or aesthetic value in the present or future.

2. The degree of harm that might result from the hazard or the risk - what will the impact be on the tree or future safety of the public.
3. What the person concerned knows, or ought reasonably to know about:
 - The hazard or the risk – must have adequate knowledge to determine the hazards risks
 - Ways of eliminating or minimising the risk – must have adequate knowledge in relation to alternative measures.
4. The availability and suitability of ways to eliminate or minimise the risk – are other resources or techniques available to complete works to the standard.
5. After assessing the extent of the risk and the available ways of eliminating or minimising the risk, the cost associated with available ways of eliminating or minimising the risk, including whether the cost is grossly disproportionate to the risk – does the cost required to complete works to the standard grossly outweigh the value of the tree.

When vegetation pruning methods are unable to comply with the requirements of AS4373, the contractor will consult with the Director Works and Services to seek approval on the pruning method to be undertaken. The Director will make the final decision on the method of pruning. AS4373 and the definition of “as far as practicable” will be explained to personnel at induction prior to commencement of works. Every action will be taken to ensure that vegetation pruning methods taken minimise the extent of pruning and the effects of such pruning on vegetation. The process above is not required when a tree is being trimmed back to established practices for that tree.

Plant and Equipment

The process for selection of appropriate plant & equipment involves the following considerations:

- access to site
- voltage of overhead conductors - equipment suitably insulated and tested
- proximity of vegetation to conductors
- configuration of equipment
- reach/ height of equipment
- cutting tools proportional to material to be cut.

Once each of these points has been considered, the best fit for the task should be selected. Availability may also be a defining factor, where the best fit is not available other options may be considered, however must still be able to achieve acceptable pruning standards in a safe manner.

All items of plant and equipment utilised on the contract must undergo a plant risk assessment/initial audit and all safety risks must be appropriately controlled prior to use of any plant or equipment on site.

A record of the sighting of the required certificates and associated documents may be kept by Council's Works Department. Any certificates shall be reviewed by the Works Department annually prior to commencement of powerlines clearance works.

Regulation 9(4)(l). A description of each alternative compliance mechanism in respect of which the responsible person has applied, or proposes to apply, for approval under clause 31 of the Code

This clause is not applicable to Council at this time. If an alternative compliance mechanism is required in the future, this ELCMP will be updated to reflect proper process to be followed.

Regulation 9(4)(m). The details of each approval for an alternative compliance mechanism

(i) That the responsible person holds

This clause is not applicable to Council at this time. If an alternative compliance mechanism is required in the future, this ELCMP will be updated to reflect proper process to be followed.

(ii) That is in effect

This clause is not applicable to Council at this time. If an alternative compliance mechanism is required in the future, this ELCMP will be updated to reflect proper process to be followed.

Regulation 9(4)(n). A description of the measures that must be used to assess the performance of the responsible person under the management plan

The Assets Engineer or Team Leader Parks & Gardens will conduct regular audits in accordance with industry standards, including Electricity Safety (Electric Line Clearance) Regulations 2020, AS4373 Pruning of Amenity Trees and best practice methods. Timing of inspections and pruning works refer to Appendix 2 Annual KPI Audit Sheet.

Continual monitoring of historical work load indicators will take place by the Responsible Person in respect to the number of:

- Annual inspections
- Identified vegetation clearance breaches to the code
- Emergency clearances
- Customer requests for line clearance
- Network operator requests for pruning
- Clearances not meeting quality requirements (AS4373 min.).

These will also be used to measure the performance of the responsible person under the management plan.

Non-compliance sites and outages data provided by Powercor will be reviewed as provided. Utilising this historical data, a range of benchmarks for intervention of non-compliance may be established. Records are kept in Council's Customer Requests Management System or records management system.

Regulation 9(4)(o). Details of the audit processes that must be used to determine the responsible person's compliance with the Code

The Works Manager or Assets Engineer will conduct regular audits (min. 1 per year) against Councils KPIs to ensure works have/are being completed in accordance with industry standards, including Electricity Safety (Electric Line Clearance) Regulations 2020, AS4373 Pruning of Amenity Trees and best practice methods and according to the schedule.

Council has considered the risk associated with the non-compliance and the population of Street Trees within the Declared Area and determined a 10% sample size to be adequate.

External specialist resources, which are experienced and have appropriate expertise in the relevant field, may be engaged to assist. Where appropriate the Contractor and Council managers are directly involved in these audits. Refer to Appendix 3 for Annual Tree Inspection and Pruning Audit Report.

Any non-conformances or required improvement actions will be recorded on the audit and CAR and be implemented immediately and signed off when completed.

Any additional hazards/risks (or any risk controls that are not effective) identified by the audits must be recorded on the checklist, addressed immediately with appropriate risk control measures (agreed with the affected persons). All non-conformances shall be addressed within agreed timeframes and with agreed methods. All work activities relating to the extreme or high risks identified must cease until the risk has been effectively eliminated or controlled (if not possible to eliminate risk).

Powercor conduct inspections and may report trees to Council that it has recorded as non-compliant to the regulations. These items will be reviewed and items identified as not complying with Corangamite Shire Council clearance tables will be programmed to be cleared. The Director Works and Services will decide if the items can be programmed in line with its annual program.

Control of Non-Conformances

The root cause for the non-conformances are identified and monitored. Recurrence of the same non-conformance will be reviewed to determine the root cause of the problem. Non-conformances that are likely to result in a safety hazard or not complying with a regulation are considered critical and must be dealt with immediately. Non-conformances that are not critical are reviewed at the Works Operations Team (WOT) and annual review and may result in further training and revision of this plan. Non-conformances may be treated as a breach of contract and as such, the contract may be terminated at the discretion of the responsible officer.

Any non-conformances identified by Council will be addressed within the timeframes that ensure compliance is maintained. The potential risk of a non-conformance can vary greatly and this will be evaluated. The Director Works and Services will have responsibility for determining the rectification timeframes.

Any non-conformance will be rectified and any continued non-conformance shall be considered a non-conformance and outworked with the contractor as deemed necessary.

Annual Review and Continuous Improvement

Works Team (WT) Meetings are carried out quarterly in alignment with the Electric Line Clearance Program. The results of the audits, KPI's and other items that were noted as not going to plan will be reviewed. The purpose of the review is to identify strategies to prevent reoccurrence or identify if further issues are likely to arise and identify cost effective improvements and apply alterations where required for the next revision of ELCMP.

Regulation 9(4)(p). The qualifications and experience that the responsible person must require of the persons who are to carry out the inspection, cutting or removal of trees in accordance with the Code

No person shall perform tree clearing work in the vicinity of live electrical apparatus unless the person:

1. has completed a training course approved by ESV; and
2. has a standard of qualifications, proficiency and experience that enable the person to safely perform the work; and
3. has been endorsed in writing by the organisation (e.g. the employer) to perform the work; and
4. has documented a hazard identification and risk assessment; and
5. has implemented a risk management process to control hazards associated with the work; and
6. complies with Occupational Health and Safety Legislation, 'Electrical Safety Rules for Vegetation Management Work near Overhead Powerlines by Non-Electrical Workers', as published or amended from time to time by Energy Safe Victoria.

The Electricity Safety (Installations) Regulations 2009 r. 319(3) refers to an authorised person as a person who holds a current certificate specifying satisfactory completion of a training course in tree clearing, approved by Energy Safe Victoria. Authorised persons undertaking works will do so in compliance with 'The Blue Book'.

All vegetation workers must complete Certificate II in ESI Powerline Vegetation Control and ESV specified annual refresher as specified by the ESV. This course and refresher training provides competencies for planning and carrying out vegetation control at and above ground level near live electrical apparatus. Council will review the ESV training requirements prior to the development of each ELCMP.

In addition to the base requirements workers must also hold an approved competency for all plant and equipment they are using or tasks they are undertaking including but not limited to:

- Operate and maintain Chainsaws – AHCARB205A
- Fell small trees – AHCARB202A
- Operate a Wood Chipper – FWPHAR22206
- Manual handling training
- Hearing conservation training
- First aid training
- High risk work license with an EWP endorsement
- Emergency procedures training (including EWP escape training)
- Victorian Driver's License (endorsed accordingly)
- OH&S Red Card or an equivalent
- Control traffic with a stop/slow bat – RIIWHS205D
- Implement traffic management plan – RIIWHS302D

Suitably qualified arborists must hold the minimum qualification of Certificate Level III in Horticulture and Arboriculture, including the "Assess Trees" and "Identify Trees" modules, or an equivalent qualification and at least three years of field experience in assessing trees.

The Responsible Person that books training using external providers is responsible for checking that the RTO can provide the services and qualifications requested and ensuring that the RTO is an approved training provider meeting the requirements of Council and the regulations.

Records of all training and refresher training are kept by the contractor Contract Supervisor. These can be viewed upon request to the Contract Supervisor e.g. for audit purposes.

Council will ensure that all contract personnel are fully conversant with the work they are required to perform under the contract and that, before any work commences, they are qualified, trained, and/or suitably experienced and are competent to carry out their duties. In accordance with supplier contracts, a training matrix and training records of staff are provided prior to the commencement of works and the validity of which is checked during audits and prior to commencing each annual program.

The training needs of individual employees and sub-contractor personnel are determined by considering:

- the contract scope of works
- minimum qualification and experience requirements for the contract
- contract service objectives
- the management plans
- job task requirements
- regulations and requirements
- individual skill deficiencies.

Refresher training is required for some compliance training modules and its purpose is to provide the employee with an opportunity to recall and reinforce their previously acquired knowledge and skills. At this opportunity, it is usual that a competence assessment is completed which may include a verbal, written and practical assessment. Refresher training may also include changes in legislation, changes to guidance material and information, created by returning staff after periods of extended leave or as a result of an incident investigation.

Induction training of all Council employees and contractors shall be undertaken prior to commencing or accessing the site. All employees and contractors must be inducted into the safety requirements for the contract and the site prior to being permitted to undertake works on the site.

As a minimum, the Council/Contract Induction topics shall cover:

- Council Induction requirements
- Council Safety, Quality and Environmental Policies
- Site Management.

Inductions shall be coordinated by the Contractors Contract Supervisor.

Any persons who commence work during the life of the contract must undergo the same site induction training prior to commencing work on site.

Any employees or contractors identified to not have current training, qualification or authorisations as required will be stood down from working on the Program and will only be permitted to return to work for the Council when the deficiencies are rectified and at the Manager Asset Planning Asset Engineer or Team Leader Parks & Gardens discretion.

Regulation 9(4)(q). Notification and consultation procedures

Council will ensure adequate notice is given to affected persons in regards to programmed line clearance works. Notification of Council's program of works will be undertaken in accordance with the Electricity Safety (Electric Line Clearance) Regulation's 2020. Where Council intends to cut or remove a tree that is on public land or within the boundary of a private property which the responsible person neither occupies nor owns or where the tree is of cultural or environmental significance, Council as the responsible person will give notice of the intended cutting or removal to all affected persons in accordance with the regulations.

Prior to the commencement of programmed works, a notice will be given by publication in a newspaper circulating generally in the locality of the land in which the tree is to be cut or removed at least 14 days and no

more than 60 days before the intended works. If time to complete expires, Council will re- advertise. See Appendix 5 for example Public Notice.

By maintaining the annual inspection and cutting program and allowing for growth for individual species no urgent pruning or clearing should be required. In the case of urgent cutting or removal being required, Council will ensure that the process identified under “**Emergency Cutting and Pruning**” is followed, in accordance with the requirements of the Code.

Regulation 9(4)(r). A procedure for the independent resolution of disputes relating to electric line clearance

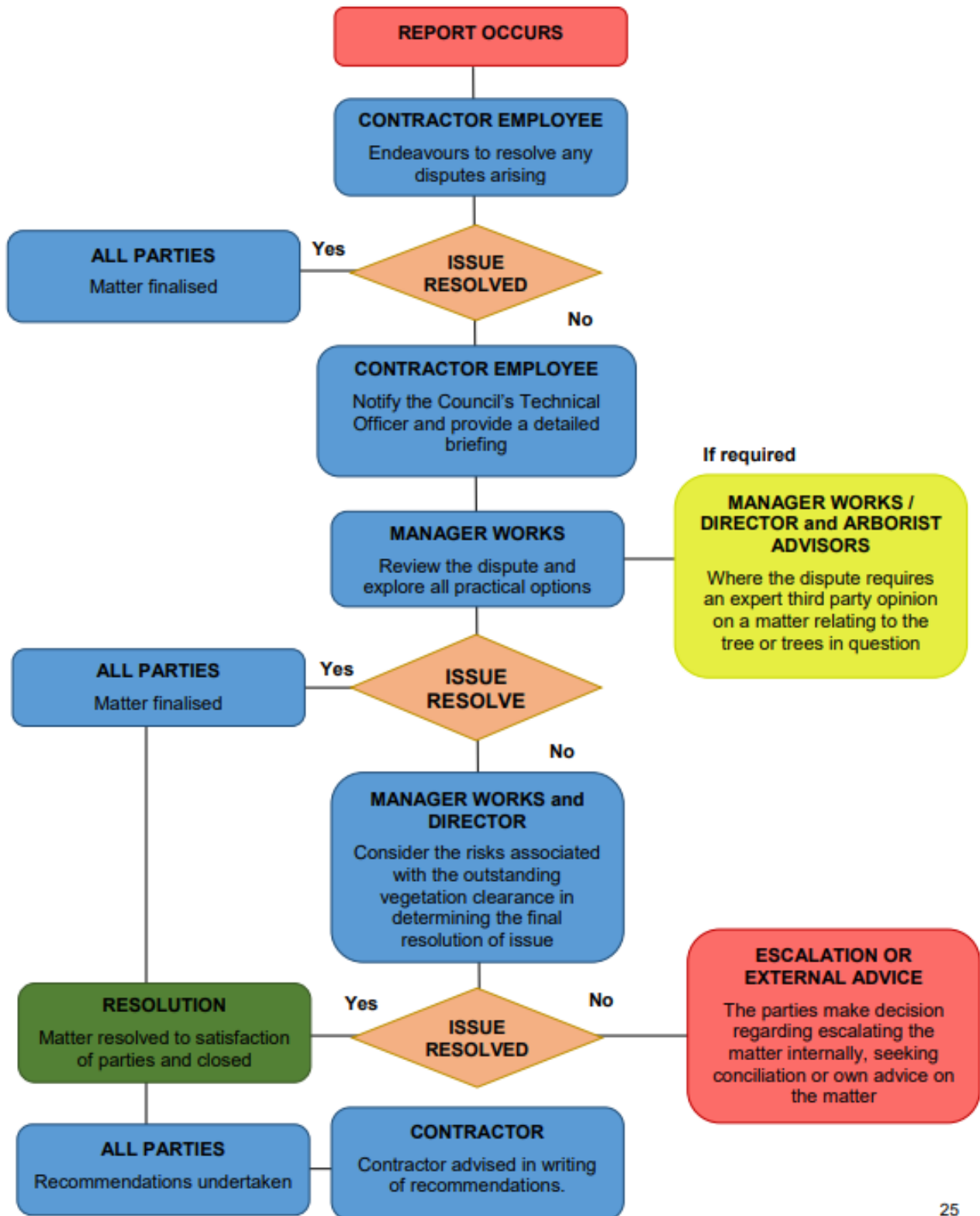
In regards to trees that are part of a dispute, if the vegetation is identified as being not compliant, the vegetation will be treated and cleared as per the urgent pruning process.

All enquiries should be managed to avoid disputes or complaints if reasonable to do so and the Corangamite Shire Council Customer Service Charter shall be complied with. Disputes should be resolved as per the following process however at any stage an affected person may choose to raise a complaint with Council in writing.

For the purposes of dispute resolution, the following Responsible Person may be contacted in conformance with the requirements set out in this section.

Name:	Shaun Broadbent
Position:	Director Works and Services
Address:	181 Manifold St Camperdown 3260
Telephone:	03 5593 7100
e-mail:	shire@corangamite.vic.gov.au

Dispute resolution process flow chart:



Expanded process:

First Level of Contact - The Contractor Employee endeavours to resolve any disputes arising from the execution of their duties in a fair and reasonable manner. Disputes cost time and money and reflect poorly on Council and the contractor's reputation. Disputes may be the result of a breakdown in communication prior to works or as a result of dissatisfaction with works.

Every attempt should be made to settle the dispute at the first point of contact to avoid unnecessarily escalating the incident. The contractor employee should explore all options within his authority in the consultation phase of the process in attempting to avoid disputes.

Reference to the Council - Where a dispute cannot be settled the contractor/employee will notify the Manager Asset Planning and provide a detailed briefing. Any correspondence from the Affected Person will be logged in the contractor quality system for response tracking. The Manager Asset Planning will review the dispute and explore all practical options at his disposal. If under the circumstances the Manager Asset Planning is able to offer any further alternatives to what has been offered, these will be presented to the Affected Person by the contractor employee or the Manager Asset Planning if it is considered appropriate.

Reference to the Director Works and Services - If the options identified by the Director Works and Services require higher management approval or if it is beyond the Director Works and Services's delegated level of authority, a detailed proposal will be presented to the CEO for approval. If all options offered are unacceptable to the Affected Person the CEO, shall consider the risks associated with the outstanding vegetation clearance in determining the final resolution of issue.

Resolution - If agreement is reached then the agreed course of action shall be recorded in Council's Customer Management System.

No Resolution - If no agreement is reached, the parties in dispute may choose to refer the case to Energy Safe Victoria (ESV) or The Energy and Water Ombudsman (EWOV), as appropriate, for a mechanism for resolution. If the non-completion of the disputed work presents a fire or safety risk the Manager may be obliged by Code, to enter the property and complete the work.

Any customers who consider they have been poorly treated under this process are welcome to approach the EWOV for recourse. The EWOV is the last industry advocate available to settle tree related disputes. Further recourse may be available through the legal system.

Name:	Energy Safe Victoria
Address:	PO Box 262 Collins Street West VIC 8007
Telephone:	1800 800 158
e-mail:	info@esv.vic.gov.au

Name:	Energy and Water Ombudsman (Victoria) Ltd
Address:	GPO Box 469 Melbourne 3001
Telephone:	1800 500 509
e-mail:	ewovinfo@ewov.com.au

The dispute resolution procedure is available for inspection at Council offices during normal business hours. The procedure is also published on Council's website.

Address of Principle office:	181 Manifold St Camperdown
Normal business hours:	Open 8:30am to 5:00pm Mon - Fri (excluding Public Holidays)
Telephone:	03 5593 7100
Weblink:	https://www.corangamite.vic.gov.au/

Regulation 10. Obligations Relating to the Management Plan

The following sections are as per Regulation 10 of the Electricity Safety (Electric Line Clearance) Regulations 2020.

Regulation 10(6). *The responsible person must ensure that a copy of the current management plan is published on the responsible person's Internet site.*

The plan published on the Corangamite Shire Council website is to be used as the current version of the plan.

The Electric Line Clearance Management Plan is published on Council's website at <https://www.corangamite.vic.gov.au/> The Manager Environment and Emergency will provide the Corangamite Shire Council's Media Department with any revisions and the updated copy of the ELCMP which is available from 1 July each year and superseded revisions are removed.

The plan commences 1 June each year.

Regulation 11. Exemptions

The following sections are as per Regulation 11 of the Electricity Safety (Electric Line Clearance) Regulations 2020.

Regulation 11(2)(a). *A responsible person who receives an exemption must ensure that a copy of the exemption is published on the responsible person's Internet site*

This clause is not applicable to Council at this time. The Responsible Person does not have any locations under exemptions. If an exemption is required in the future, this ELCMP will be updated to reflect proper process to be followed.

Clearance Responsibilities

Duty relating to the safety of cutting or removal of trees close to an electric line.

Schedule 1, Part 2, Division 1(3). *Responsible person must keep minimum clearance space clear of trees*

- (1) Council's responsible person (RP) must ensure that, at all times, no part of a tree for which the person has clearance responsibilities is within the minimum clearance space for a span of an electric line.
- (2) Subclause (1) is subject to clauses 4, 5, 6 and 7. Note Clauses 4, 5, 6 and 7 provide that certain responsible persons are not required to ensure that certain branches are clear of the minimum clearance space for spans of certain electric lines.

Schedule 1, Part 2, Division 1. Clause 4, 5, 6 and 7

Clauses 4,5, 6 and 7 relating to exceptions to minimum clearance spaces are currently not applicable. If they become relevant, Council will update this ELCMP to reflect the clauses being implemented.

Schedule 1, Part 2, Division 1(9). Responsible person may cut or remove a hazard tree

A hazard tree is a tree that:

- A suitably qualified arborist has assessed the tree as to foreseeable conditions and advised the tree or part of the tree is likely to fail and will contact an electric line if this occurs.
- All identified hazard trees are to be cleared to ensure compliance is maintained and in a timely manner that prevents the tree from entering the clearance space. Hazard trees are to be cleared only when it is safe to do so and if a Hazard tree cannot be removed in a timely manner, Powercor are to be contacted to discuss other means of removal or Powerline disconnection.
- As part of the annual inspection Council will seek to identify vegetation infringing on clearance space within the declared area. The Inspection includes the Hazard Space outside the clearance area and any regrowth that may enter the clearance space before the next scheduled inspection.
- Trees in the Hazard space that are identified and require clearing will be cleared without further assessment if the tree is urgent or contains significant faults that are deemed to be a risk to the public or is located in the HBRA during the declared fire danger period.
- Hazard trees that are found to NOT be the responsibility of Council will be reported to Powercor by phone or email.
- Trees reported by residents or other authorities will be recorded on Councils Works Request system. Trees reported that are Councils responsibility will be actioned as required by this plan. Trees that are not Councils responsibility will be recorded and forwarded to Powercor (see below contact details).

If a hazardous tree is identified during inspections, a priority inspection is to be made by a responsible person taking into consideration foreseeable local conditions and if the tree is likely to fail and will contact with electric lines will occur.

Schedule 1, Part 2, Division 4. Additional duties of responsible persons

Division 4(20). Duty relating to the safety of cutting or removal of trees close to an electric line

Powercor are the responsible Distribution Business and owner of assets located within the declared areas which Council is responsible for.

Where concerns are raised in relation to the safety of maintenance activities associated with maintaining vegetation clearances inside of the declared area, Council will contact Powercor to discuss concerns. Final recommendations will be provided by ORP Manager in an email to be recorded in Council's electronic data capture system.

Council has no clearance responsibilities in relation to a span of an electric line that is part of a railway supply network or tramway supply network.

As required information will be provided to the Responsible Person/Owner, operator or DB process for providing assistance:

Name of Company:	Powercor Australia
Position:	ORP Manager
Name:	Leo Hourigan
Address:	Locked Bag 14090 Melbourne 8001
Telephone:	0408 304 984
e-mail:	lhourigan@powercor.com.au

Appendix 1(A)

Note: maps in Appendices are copies only and more detailed GIS versions can be obtained by contacting Council.



Appendix 1 (A)
Camperdown Township Street Trees
Under Electric Lines with Heritage Overlay

- Tree Location
- Declared Area
- Heritage Overlay



Appendix 1(B)

assetID	Bot_Name	HEALTH	TREE_AGE	STREET_NAM	INS_DATE
TR13659	Acacia floribunda	Fair	Mature	WARE STREET	Nov 1, 2020
TR13676	Populus Xcanadensis	Fair	Mature	WARE STREET	Nov 1, 2020
TR13677	Populus Xcanadensis	Good	Mature	WARE STREET	Nov 1, 2020
TR13678	Populus Xcanadensis	Good	Mature	WARE STREET	Nov 1, 2020
TR13679	Populus Xcanadensis	Fair	Mature	MANIFOLD STREET	Nov 1, 2020
TR13054	Quercus robur	Good	Mature	SCOTT STREET	Nov 1, 2020
TR13055	Quercus robur	Fair	Mature	SCOTT STREET	Nov 1, 2020
TR13056	Quercus robur	Good	Mature	BROOKE STREET	Nov 1, 2020
TR13057	Quercus robur	Fair	Mature	BROOKE STREET	Nov 1, 2020
TR13142	Vacant	Vacant	Vacant	CAMPBELL STREET	Nov 1, 2020
TR13148	Quercus robur	Fair	Mature	BROOKE STREET	Nov 1, 2020
TR13149	Quercus robur	Fair	Mature	BROOKE STREET	Nov 1, 2020
TR13150	Quercus robur	Fair	Mature	BROOKE STREET	Nov 1, 2020
TR13306	Quercus robur	Fair	Mature	BROOKE STREET	Nov 1, 2020
TR13307	Quercus robur	Fair	Mature	BROOKE STREET	Nov 1, 2020
TR13308	Quercus robur	Good	Mature	BROOKE STREET	Nov 1, 2020
TR13309	Quercus robur	Fair	Mature	BROOKE STREET	Nov 1, 2020
TR13319	Quercus robur	Fair	Mature	BROOKE STREET	Nov 1, 2020
TR13320	Quercus robur	Good	Mature	BROOKE STREET	Nov 1, 2020
TR13377	Quercus robur	Good	Mature	BROOKE STREET	Nov 1, 2020
TR13379	Quercus robur	Fair	Mature	BROOKE STREET	Nov 1, 2020
TR13380	Quercus robur	Good	Mature	BROOKE STREET	Nov 1, 2020
TR13397	Quercus robur	Fair	Mature	BROOKE STREET	Nov 1, 2020
TR13398	Quercus robur	Good	Mature	BROOKE STREET	Nov 1, 2020
TR13399	Quercus robur	Good	Mature	BROOKE STREET	Nov 1, 2020
TR13416	Quercus robur	Fair	Mature	BROOKE STREET	Nov 1, 2020
TR13419	Quercus robur	Good	Mature	BROOKE STREET	Nov 1, 2020
TR13598	Quercus robur	Fair	Mature	BROOKE STREET	Nov 1, 2020
TR13599	Quercus robur	Fair	Mature	BROOKE STREET	Nov 1, 2020
TR13628	Quercus robur	Good	Mature	BROOKE STREET	Nov 1, 2020
TR13631	Quercus robur	Good	Mature	BROOKE STREET	Nov 1, 2020

TR13632	Quercus robur	Good	Mature	BROOKE STREET	Nov 1, 2020
TR13668	Quercus robur	Fair	Mature Semi	MANIFOLD STREET	Nov 1, 2020 Nov 1, 2020
TR14217	Prunus serrulata	Fair	mature Semi	MANIFOLD STREET	
TR19550	Tilia xeuropaea	Good	mature	MANIFOLD STREET	Nov 1, 2020
TR15299	Ulmus procera	Fair	Mature	MANIFOLD STREET	Nov 1, 2020
TR15302	Ulmus procera	Poor	Mature	MANIFOLD STREET	Nov 1, 2020
TR15303	Ulmus procera	Poor	Mature	CRESSY STREET	Nov 1, 2020
TR03913	Ulmus procera	Fair	Mature	LEURA STREET	Nov 1, 2020
TR03891	Ulmus procera	Fair	Mature	LEURA STREET	Nov 1, 2020
TR03874	Ulmus procera	Poor	Mature	LEURA STREET	Nov 1, 2020
TR03875	Ulmus procera	Good	Mature	LEURA STREET	Nov 1, 2020
TR03923	Ulmus procera	Fair	Mature	WILSON STREET	Nov 1, 2020
TR03961	Ulmus procera	Good	Mature	LEURA STREET	Nov 1, 2020
TR03998	Ulmus procera	Fair	Mature	MANIFOLD STREET	Nov 1, 2020
TR04004	Prunus serrulata	Good	Mature	MANIFOLD STREET	Nov 1, 2020
TR04007	Prunus serrulata	Good	Mature	MANIFOLD STREET	Nov 1, 2020
TR04011	Prunus serrulata	Fair	Mature	MANIFOLD STREET	Nov 1, 2020
TR04012	Prunus serrulata	Good	Mature	MANIFOLD STREET	Nov 1, 2020
TR04013	Vacant	Vacant	Vacant	MANIFOLD STREET	Nov 1, 2020
TR04014	Prunus serrulata	Fair	Mature	MANIFOLD STREET	Nov 1, 2020
TR04016	Prunus serrulata	Good	Mature	MANIFOLD STREET	Nov 1, 2020
TR04017	Prunus serrulata	Fair	Mature Semi	MANIFOLD STREET	Nov 1, 2020 Nov 1, 2020
TR04018	Prunus serrulata	Good	mature	MANIFOLD STREET	
TR04019	Prunus serrulata	Fair	Mature	MANIFOLD STREET	Nov 1, 2020
TR04020	Prunus serrulata	Fair	Mature	MANIFOLD STREET	Nov 1, 2020
TR19590	Vacant	Vacant	Vacant	MANIFOLD STREET	Nov 1, 2020
TR04582	Quercus robur	Good	Mature	MANIFOLD STREET	Nov 1, 2020
TR04583	Quercus robur	Good	Mature	MANIFOLD STREET	Nov 1, 2020
TR04584	Quercus robur	Good	Mature	MANIFOLD STREET	Nov 1, 2020
TR04603	Eucalyptus viminalis	Fair	Mature	CURDIE STREET	Nov 1, 2020
TR15688	Ulmus procera	Fair	Mature	MANIFOLD STREET	Nov 1, 2020
TR15689	Ulmus procera	Fair	Mature	MANIFOLD STREET	Nov 1, 2020
TR15690	Ulmus procera	Fair	Mature	MANIFOLD STREET	Nov 1, 2020
TR15691	Ulmus procera	Fair	Mature	MANIFOLD STREET	Nov 1, 2020

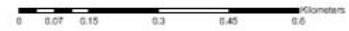
TR15692	Ulmus procera	Good	Semi mature	MANIFOLD STREET	Nov 1, 2020
TR15693	Ulmus procera	Fair	Mature	MANIFOLD STREET	Nov 1, 2020
TR15473	Stump	Stump	Stump	MANIFOLD STREET	Nov 1, 2020
TR15474	Stump	Stump	Stump	MANIFOLD STREET	Nov 1, 2020
TR15475	Stump	Stump	Stump	MANIFOLD STREET	Nov 1, 2020
TR15483	Callistemon citrinus	Good	Semi mature	MANIFOLD STREET	Nov 1, 2020
TR19539	Callistemon salignus Casuarina	Good	Young Semi	MANIFOLD STREET	Nov 1, 2020 Nov 1, 2020
TR19540	cunninghamiana	Poor	mature	MANIFOLD STREET	
TR15296	Ulmus procera	Poor	Mature	CRESSY STREET	Nov 1, 2020
TR05205	Prunus serrulata	Fair	Mature	CRESSY STREET	Nov 1, 2020
TR05206	Prunus serrulata	Fair	Mature	CRESSY STREET	Nov 1, 2020

Appendix 1(C)



Appendix 1(C)
Camperdown Township Street Trees
Under Electric Lines

• Tree Location
— Declared Area



Appendix 1(D)

assetID	Bot_Name	HEALTH	TREE_AGE	STREET_NAM	INS_DATE
TR04028	Eucalyptus leucoxylon var. rosea	Good	Mature	ADENEY STREET	Oct 9, 2020
TR04672	Prunus cerasifera 'Nigra'	Fair	Semi mature	ADENEY STREET	Oct 9, 2020
TR04673	Prunus serrulata	Good	Mature	ADENEY STREET	Oct 9, 2020
TR04674	Prunus cerasifera 'Nigra'	Good	Young	ADENEY STREET	Oct 9, 2020
TR04675	Prunus serrulata	Good	Mature	ADENEY STREET	Oct 9, 2020
TR19588	Prunus cerasifera 'Nigra'	Good	Semi mature	ADENEY STREET	Oct 9, 2020
TR19589	Prunus cerasifera 'Nigra'	Good	Semi mature	ADENEY STREET	Oct 9, 2020
TR04453	Ceratopetalum gummiferum	Poor	Mature	ADENEY STREET	Oct 9, 2020
TR04712	Fraxinus angustifolia subsp. Oxycarpa	Good	Mature	ADENEY STREET	Oct 9, 2020
TR04713	Fraxinus angustifolia subsp. Oxycarpa	Fair	Mature	ADENEY STREET	Oct 9, 2020
TR04714	Fraxinus angustifolia subsp. Oxycarpa	Fair	Mature	ADENEY STREET	Oct 9, 2020
TR12957	Tilia cordata	Good	Semi mature	BARKLY STREET	Oct 9, 2020
TR12958	Tilia cordata	Good	Semi mature	BARKLY STREET	Oct 9, 2020
TR13152	Brachychiton populneus	Fair	Mature	BARKLY STREET	Oct 9, 2020
TR13153	Corymbia ficifolia	Good	Mature	BARKLY STREET	Oct 9, 2020
TR13154	Callistemon salignus	Good	Semi mature	BARKLY STREET	Oct 9, 2020
TR13155	Corymbia ficifolia	Poor	Mature	BARKLY STREET	Oct 9, 2020
TR13156	Koelreuteria paniculata	Good	Semi mature	BARKLY STREET	Oct 9, 2020
TR13159	Fraxinus angustifolia subsp. Oxycarpa	Good	Mature	BARKLY STREET	Oct 9, 2020
TR13160	Fraxinus excelsior 'Aurea'	Good	Mature	BARKLY STREET	Oct 9, 2020
TR13161	Liquidambar styraciflua	Good	Mature	BARKLY STREET	Oct 9, 2020
TR13162	Liquidambar styraciflua	Good	Semi mature	BARKLY STREET	Oct 9, 2020
TR13163	Liquidambar styraciflua	Good	Mature	BARKLY STREET	Oct 9, 2020
TR13164	Fraxinus excelsior 'Aurea'	Good	Mature	BARKLY STREET	Oct 9, 2020
TR13165	Fraxinus angustifolia subsp. Oxycarpa	Good	Mature	BARKLY STREET	Oct 9, 2020
TR13166	Liquidambar styraciflua	Good	Mature	BARKLY STREET	Oct 9, 2020
TR13167	Fraxinus angustifolia subsp. Oxycarpa	Fair	Mature	BARKLY STREET	Oct 9, 2020

TR04455	Fraxinus angustifolia subsp. Oxycarpa	Fair	Mature	BARKLY STREET	Oct 9, 2020
TR04456	Fraxinus angustifolia subsp. Oxycarpa	Fair	Mature	BARKLY STREET	Oct 9, 2020
TR04457	Fraxinus angustifolia subsp. Oxycarpa	Fair	Mature	BARKLY STREET	Oct 9, 2020
TR04458	Fraxinus angustifolia subsp. Oxycarpa	Fair	Mature	BARKLY STREET	Oct 9, 2020
TR04459	Liquidambar styraciflua Fraxinus angustifolia subsp.	Fair	Mature	BARKLY STREET	Oct 9, 2020
TR04460	Oxycarpa Fraxinus angustifolia subsp.	Fair	Mature	BARKLY STREET	Oct 9, 2020
TR04461	Oxycarpa Fraxinus angustifolia subsp.	Fair	Mature	BARKLY STREET	Oct 9, 2020
TR04462	Oxycarpa	Fair	Mature	BARKLY STREET	Oct 9, 2020
TR04463	Fraxinus excelsior 'Aurea'	Good	Mature	BARKLY STREET	Oct 9, 2020
TR04469	Fraxinus excelsior 'Aurea'	Fair	Mature	BARKLY STREET	Oct 9, 2020
TR04470	Liquidambar styraciflua	Fair	Mature	BARKLY STREET	Oct 9, 2020
TR04471	Brachychiton populneus Fraxinus angustifolia subsp.	Fair	Mature	BARKLY STREET	Oct 9, 2020
TR04472	Oxycarpa Fraxinus angustifolia subsp.	Good	Mature	BARKLY STREET	Oct 9, 2020
TR04473	Oxycarpa	Fair	Mature	BARKLY STREET	Oct 9, 2020
TR04474	Prunus serrulata	Poor	Mature	BARKLY STREET	Oct 9, 2020
TR04487	Fraxinus excelsior 'Aurea'	Good	Mature	BARKLY STREET	Oct 9, 2020
TR04635	Quercus robur	Good	Mature	BARKLY STREET	Oct 9, 2020
TR14101	Melaleuca styphelioides	Good	Mature	BOWEN STREET	Oct 9, 2020
TR14283	Photinia glabra	Good	Mature	BOWEN STREET	Oct 9, 2020
TR14284	Photinia glabra	Fair	Mature	BOWEN STREET	Oct 9, 2020
TR14285	Photinia glabra	Fair	Mature	BOWEN STREET	Oct 9, 2020
TR14288	Photinia glabra	Good	Mature	BOWEN STREET	Oct 9, 2020
TR14348	Quercus robur	Fair	Mature	BOWEN STREET	Oct 9, 2020
TR14349	Quercus robur	Fair	Mature	BOWEN STREET	Oct 9, 2020
TR14302	Prunus serrulata	Fair	Mature	BOWEN STREET	Oct 9, 2020
TR14304	Prunus serrulata	Fair	Mature	BOWEN STREET	Oct 9, 2020
TR14329	Prunus serrulata	Fair	Mature	BOWEN STREET	Oct 9, 2020
TR14330	Prunus serrulata	Fair	Semi mature	BOWEN STREET	Oct 9, 2020
TR14333	Prunus serrulata	Fair	Semi mature	BOWEN STREET	Oct 9, 2020
TR14334	Prunus serrulata	Fair	Semi mature	BOWEN STREET	Oct 9, 2020

TR14338	Malus domestica	Fair	Mature	BOWEN STREET	Oct 9, 2020
TR14339	Vacant	Vacant	Vacant	BOWEN STREET	Oct 9, 2020
TR14340	Vacant	Vacant	Vacant	BOWEN STREET	Oct 9, 2020
TR14341	Malus ioensis 'Plena'	Good	Mature	BOWEN STREET	Oct 9, 2020
TR14342	Malus domestica	Good	Mature	BOWEN STREET	Oct 9, 2020
TR14346	Malus domestica	Good	Mature	BOWEN STREET	Oct 9, 2020
TR14347	Malus domestica	Poor	Mature	BOWEN STREET	Oct 9, 2020
TR19546	Hebe sp.	Fair	Young	BOWEN STREET	Oct 9, 2020
TR14386	Prunus serrulata	Fair	Semi mature	BOWEN STREET	Oct 9, 2020
TR14388	Lagunaria patersonia	Good	Mature	BOWEN STREET	Oct 9, 2020
TR14389	Fraxinus excelsior 'Aurea'	Good	Mature	BOWEN STREET	Oct 9, 2020
TR14441	Vacant	Vacant	Vacant	BOWEN STREET	Oct 9, 2020
TR14445	Prunus cerasifera 'Nigra'	Good	Semi mature	BOWEN STREET	Oct 9, 2020
TR14527	Fraxinus angustifolia	Good	Mature	BOWYER STREET	Oct 9, 2020
TR14528	Fraxinus excelsior 'Aurea'	Good	Mature	BOWYER STREET	Oct 9, 2020
	Fraxinus angustifolia				Oct 9, 2020
TR14529	'Raywood'	Good	Mature	BOWYER STREET	
TR13056	Quercus robur	Good	Mature	BROOKE STREET	Oct 9, 2020
TR13057	Quercus robur	Fair	Mature	BROOKE STREET	Oct 9, 2020
TR13148	Quercus robur	Fair	Mature	BROOKE STREET	Oct 9, 2020
TR13149	Quercus robur	Fair	Mature	BROOKE STREET	Oct 9, 2020
TR13150	Quercus robur	Fair	Mature	BROOKE STREET	Oct 9, 2020
TR13306	Quercus robur	Fair	Mature	BROOKE STREET	Oct 9, 2020
TR13307	Quercus robur	Fair	Mature	BROOKE STREET	Oct 9, 2020
TR13308	Quercus robur	Good	Mature	BROOKE STREET	Oct 9, 2020
TR13309	Quercus robur	Fair	Mature	BROOKE STREET	Oct 9, 2020
TR13319	Quercus robur	Fair	Mature	BROOKE STREET	Oct 9, 2020
TR13320	Quercus robur	Good	Mature	BROOKE STREET	Oct 9, 2020
TR13462	Prunus cerasifera 'Nigra'	Good	Mature	BROOKE STREET	Oct 9, 2020
TR13371	Quercus robur	Fair	Mature	BROOKE STREET	Oct 9, 2020
TR13377	Quercus robur	Good	Mature	BROOKE STREET	Oct 9, 2020
TR13379	Quercus robur	Fair	Mature	BROOKE STREET	Oct 9, 2020
TR13380	Quercus robur	Good	Mature	BROOKE STREET	Oct 9, 2020
TR13397	Quercus robur	Fair	Mature	BROOKE STREET	Oct 9, 2020
TR13398	Quercus robur	Good	Mature	BROOKE STREET	Oct 9, 2020
TR13399	Quercus robur	Good	Mature	BROOKE STREET	Oct 9, 2020
TR13416	Quercus robur	Fair	Mature	BROOKE STREET	Oct 9, 2020

TR13419	Quercus robur	Good	Mature	BROOKE STREET	Oct 9, 2020
TR13598	Quercus robur	Fair	Mature	BROOKE STREET	Oct 9, 2020
TR13599	Quercus robur	Fair	Mature	BROOKE STREET	Oct 9, 2020
TR13628	Quercus robur	Good	Mature	BROOKE STREET	Oct 9, 2020
TR13631	Quercus robur	Good	Mature	BROOKE STREET	Oct 9, 2020
TR13632	Quercus robur	Good	Mature	BROOKE STREET	Oct 9, 2020
TR13142	Vacant	Vacant	Vacant	CAMPBELL STREET	Oct 9, 2020
TR13065	Malus Xpurpurea	Fair	Mature	CAMPBELL STREET	Oct 9, 2020
TR13066	Eucalyptus leucoxylon	Fair	Mature	CAMPBELL STREET	Oct 9, 2020
TR13094	Acer palmatum	Poor	Young	CAMPBELL STREET	Oct 9, 2020
TR13097	Cotoneaster glaucophyllus var. serotinus	Good	Mature	CAMPBELL STREET	Oct 9, 2020
TR13113	Eucalyptus cladocalyx 'Nana'	Good	Mature	CAMPBELL STREET	Oct 9, 2020
TR13114	Corymbia ficifolia	Fair	Mature	CAMPBELL STREET	Oct 9, 2020
TR13115	Quercus robur	Good	Mature	CAMPBELL STREET	Oct 9, 2020
TR13116	Malus Xpurpurea	Fair	Mature	CAMPBELL STREET	Oct 9, 2020
TR13117	Fraxinus ornus	Fair	Mature	CAMPBELL STREET	Oct 9, 2020
TR13118	Lagunaria patersonia	Fair	Mature	CAMPBELL STREET	Oct 9, 2020
	Fraxinus angustifolia subsp.				Oct 9, 2020
TR13138	Oxycarpa	Good	Mature	CAMPBELL STREET	
TR19497	Acer palmatum	Fair	Young	CAMPBELL STREET	Oct 9, 2020
TR19498	Acer palmatum	Good	Young	CAMPBELL STREET	Oct 9, 2020
TR04658	Prunus serrulata	Good	Semi mature	CAMPBELL STREET	Oct 9, 2020
TR04659	Prunus serrulata	Good	Semi mature	CAMPBELL STREET	Oct 9, 2020
TR04660	Prunus serrulata	Good	Mature	CAMPBELL STREET	Oct 9, 2020
TR04676	Prunus cerasifera 'Nigra'	Good	Mature	CAMPBELL STREET	Oct 9, 2020
TR04678	Pittosporum tenuifolium	Good	Mature	CAMPBELL STREET	Oct 9, 2020
TR04503	Prunus cerasifera 'Nigra'	Fair	Mature	CAMPBELL STREET	Oct 9, 2020
TR04505	Prunus serrulata	Fair	Mature	CAMPBELL STREET	Oct 9, 2020
TR04506	Vacant	Vacant	Vacant	CAMPBELL STREET	Oct 9, 2020
TR04507	Malus ioensis 'Plena'	Good	Semi mature	CAMPBELL STREET	Oct 9, 2020
TR04508	Prunus cerasifera 'Nigra'	Good	Semi mature	CAMPBELL STREET	Oct 9, 2020
	Fraxinus angustifolia subsp.				Oct 9, 2020
TR04509	Oxycarpa	Good	Mature	CAMPBELL STREET	
TR04510	Eucalyptus globulus	Good	Mature	CAMPBELL STREET	Oct 9, 2020
TR04511	Prunus cerasifera 'Nigra'	Fair	Mature	CAMPBELL STREET	Oct 9, 2020
TR04512	Prunus cerasifera 'Nigra'	Good	Mature	CAMPBELL STREET	Oct 9, 2020

TR04556	Lagunaria patersonia	Fair	Mature	CAMPBELL STREET	Oct 9, 2020
TR04557	Prunus cerasifera 'Nigra'	Fair	Mature	CAMPBELL STREET	Oct 9, 2020
TR04558	Vacant	Vacant	Vacant	CAMPBELL STREET	Oct 9, 2020
	Fraxinus angustifolia subsp.				Oct 9, 2020
TR04559	Oxycarpa	Good	Mature	CAMPBELL STREET	
TR04560	Prunus cerasifera 'Nigra'	Good	Mature	CAMPBELL STREET	Oct 9, 2020
TR04561	Vacant	Vacant	Vacant	CAMPBELL STREET	Oct 9, 2020
				CAMPERDOWN- COBDEN ROAD	Oct 9, 2020
TR13233	Angophora costata	Good	Mature	CAMPERDOWN- COBDEN ROAD	Oct 9, 2020
TR13234	Angophora costata	Good	Mature	CAMPERDOWN- COBDEN ROAD	Oct 9, 2020
TR13235	Angophora costata	Good	Mature	CAMPERDOWN- COBDEN ROAD	Oct 9, 2020
TR13236	Angophora costata	Good	Mature	CAMPERDOWN- COBDEN ROAD	Oct 9, 2020
	Fraxinus angustifolia subsp.				Oct 9, 2020
TR13243	Oxycarpa	Fair	Mature	CAMPERDOWN- COBDEN ROAD	Oct 9, 2020
TR14706	Melaleuca bracteata	Fair	Mature	CHURCH STREET	Oct 9, 2020
TR19523	Melaleuca bracteata	Dead	Semi mature	CHURCH STREET	Oct 9, 2020
TR14705	Melaleuca styphelioides	Good	Mature	CHURCH STREET	Oct 9, 2020
TR14775	Photinia glabra	Good	Semi mature	CHURCH STREET	Oct 9, 2020
TR14776	Melaleuca sp.	Fair	Semi mature	CHURCH STREET	Oct 9, 2020
TR14777	Photinia glabra	Good	Semi mature	CHURCH STREET	Oct 9, 2020
TR14778	Pittosporum undulatum	Good	Mature	CHURCH STREET	Oct 9, 2020
TR14779	Melaleuca sp.	Fair	Semi mature	CHURCH STREET	Oct 9, 2020
TR14780	Pittosporum undulatum	Good	Mature	CHURCH STREET	Oct 9, 2020
TR19519	Coprosma repens	Good	Semi mature	CHURCH STREET	Oct 9, 2020
TR19520	Polygala myrtifolia	Good	Semi mature	CHURCH STREET	Oct 9, 2020
TR19521	Pittosporum undulatum	Good	Mature	CHURCH STREET	Oct 9, 2020
TR19522	Polygala myrtifolia	Good	Semi mature	CHURCH STREET	Oct 9, 2020
TR14996	Prunus cerasifera 'Nigra'	Fair	Mature	CHURCH STREET	Oct 9, 2020
TR14922	Vacant	Vacant	Vacant	CHURCH STREET	Oct 9, 2020
TR14987	Malus domestica	Good	Mature	COLE STREET	Oct 9, 2020
TR14989	Malus floribunda	Good	Semi mature	COLE STREET	Oct 9, 2020
TR14990	Malus domestica	Good	Mature	COLE STREET	Oct 9, 2020
TR14993	Prunus cerasifera 'Nigra'	Fair	Mature	COLE STREET	Oct 9, 2020
TR15208	Pyrus calleryana	Good	Semi mature	CRESSY STREET	Oct 9, 2020
TR15303	Ulmus procera	Poor	Mature	CRESSY STREET	Oct 9, 2020

TR15335	Vacant	Vacant	Vacant	CRESSY STREET	Oct 9, 2020
TR15336	Malus floribunda	Fair	Mature	CRESSY STREET	Oct 9, 2020
TR05160	Angophora costata	Good	Mature	CRESSY STREET	Oct 9, 2020
TR05074	Eucalyptus camaldulensis	Fair	Mature	CRESSY STREET	Oct 9, 2020
TR05075	Corymbia citriodora	Fair	Mature	CRESSY STREET	Oct 9, 2020
TR05077	Eucalyptus melliodora	Fair	Mature	CRESSY STREET	Oct 9, 2020
TR05078	Eucalyptus viridis	Poor	Mature	CRESSY STREET	Oct 9, 2020
TR05082	Casuarina cunninghamiana	Good	Mature	CRESSY STREET	Oct 9, 2020
TR05090	Eucalyptus kitsoniana	Fair	Mature	CRESSY STREET	Oct 9, 2020
TR05093	Casuarina cunninghamiana	Good	Mature	CRESSY STREET	Oct 9, 2020
TR05094	Eucalyptus leucoxyton	Poor	Mature	CRESSY STREET	Oct 9, 2020
TR05095	Corymbia maculata	Good	Mature	CRESSY STREET	Oct 9, 2020
TR05096	Eucalyptus melliodora	Fair	Mature	CRESSY STREET	Oct 9, 2020
TR05098	Melaleuca armillaris	Fair	Mature	CRESSY STREET	Oct 9, 2020
TR05016	Allocasuarina verticillata	Good	Mature	CRESSY STREET	Oct 9, 2020
TR05037	Corymbia maculata	Fair	Mature	CRESSY STREET	Oct 9, 2020
TR05040	Agonis flexuosa	Poor	Mature	CRESSY STREET	Oct 9, 2020
TR05041	Ulmus minor	Fair	Mature	CRESSY STREET	Oct 9, 2020
TR05066	Casuarina cunninghamiana	Good	Mature	CRESSY STREET	Oct 9, 2020
TR05180	Ligustrum lucidum	Fair	Mature	CRESSY STREET	Oct 9, 2020
TR05015	Allocasuarina verticillata	Good	Mature	CRESSY STREET	Oct 9, 2020
TR15296	Ulmus procera	Poor	Mature	CRESSY STREET	Oct 9, 2020
TR15248	Malus floribunda	Fair	Semi mature	CRESSY STREET	Oct 9, 2020
TR15249	Malus floribunda	Fair	Semi mature	CRESSY STREET	Oct 9, 2020
	Metrosideros excelsa				Oct 9, 2020
TR15250	'Variegata'	Poor	Mature	CRESSY STREET	
TR15251	Metrosideros excelsa	Good	Mature	CRESSY STREET	Oct 9, 2020
	Metrosideros excelsa				Oct 9, 2020
TR15252	'Variegata'	Poor	Mature	CRESSY STREET	
TR05186	Prunus cerasifera 'Nigra'	Fair	Mature	CRESSY STREET	Oct 9, 2020
TR05166	Prunus serrulata	Fair	Mature	CRESSY STREET	Oct 9, 2020
TR05170	Prunus serrulata	Fair	Mature	CRESSY STREET	Oct 9, 2020
TR05181	Prunus serrulata	Fair	Mature	CRESSY STREET	Oct 9, 2020
TR05182	Pyrus calleryana	Fair	Mature	CRESSY STREET	Oct 9, 2020
TR05183	Prunus serrulata	Fair	Mature	CRESSY STREET	Oct 9, 2020
TR05184	Prunus cerasifera 'Nigra'	Fair	Mature	CRESSY STREET	Oct 9, 2020
TR05185	Prunus serrulata	Fair	Mature	CRESSY STREET	Oct 9, 2020

TR05202	Prunus serrulata	Fair	Mature	CRESSY STREET	Oct 9, 2020
TR05203	Prunus serrulata	Fair	Mature	CRESSY STREET	Oct 9, 2020
TR05204	Prunus serrulata	Fair	Mature	CRESSY STREET	Oct 9, 2020
TR05205	Prunus serrulata	Fair	Mature	CRESSY STREET	Oct 9, 2020
TR05206	Prunus serrulata	Fair	Mature	CRESSY STREET	Oct 9, 2020
TR04250	Prunus Xblireana	Fair	Mature	CURDIE STREET	Oct 9, 2020
TR04254	Eucalyptus leucoxyton	Poor	Mature	CURDIE STREET	Oct 9, 2020
TR04332	Jacaranda mimosifolia	Fair	Semi mature	CURDIE STREET	Oct 9, 2020
TR04329	Agonis flexuosa	Good	Young	CURDIE STREET	Oct 9, 2020
TR04330	Agonis flexuosa	Fair	Mature	CURDIE STREET	Oct 9, 2020
TR04331	Jacaranda mimosifolia	Fair	Semi mature	CURDIE STREET	Oct 9, 2020
TR04356	Vacant	Vacant	Vacant	CURDIE STREET	Oct 9, 2020
TR04575	Quercus robur	Good	Mature	CURDIE STREET	Oct 9, 2020
TR04576	Quercus robur	Good	Mature	CURDIE STREET	Oct 9, 2020
TR04464	Liquidambar styraciflua	Good	Mature	CURDIE STREET	Oct 9, 2020
TR04465	Fraxinus excelsior 'Aurea'	Good	Mature	CURDIE STREET	Oct 9, 2020
	Fraxinus angustifolia subsp.				Oct 9, 2020
TR04466	Oxycarpa	Good	Mature	CURDIE STREET	
	Fraxinus angustifolia subsp.				Oct 9, 2020
TR04467	Oxycarpa	Good	Semi mature	CURDIE STREET	
	Fraxinus angustifolia subsp.				Oct 9, 2020
TR04468	Oxycarpa	Good	Semi mature	CURDIE STREET	
	Fraxinus angustifolia subsp.				Oct 9, 2020
TR04702	Oxycarpa	Fair	Mature	CURDIE STREET	
	Fraxinus angustifolia				Oct 9, 2020
TR04703	'Raywood'	Fair	Mature	CURDIE STREET	
TR04629	Prunus serrulata	Fair	Mature	CURDIE STREET	Oct 9, 2020
TR04633	Lophostemon confertus	Good	Mature	CURDIE STREET	Oct 9, 2020
TR04638	Lophostemon confertus	Good	Mature	CURDIE STREET	Oct 9, 2020
TR04639	Corymbia ficifolia	Fair	Mature	CURDIE STREET	Oct 9, 2020
TR04603	Eucalyptus viminalis	Fair	Mature	CURDIE STREET	Oct 9, 2020
TR05249	Prunus serrulata	Fair	Mature	DASKEIN STREET	Oct 9, 2020
TR05250	Prunus cerasifera 'Nigra'	Fair	Mature	DASKEIN STREET	Oct 9, 2020
TR05271	Prunus cerasifera 'Nigra'	Fair	Mature	DASKEIN STREET	Oct 9, 2020
TR05272	Prunus cerasifera 'Nigra'	Fair	Mature	DASKEIN STREET	Oct 9, 2020
TR05273	Prunus cerasifera 'Nigra'	Fair	Mature	DASKEIN STREET	Oct 9, 2020
TR14112	Grevillea Hybrid	Poor	Mature	DAWSON STREET	Oct 9, 2020
TR14113	Grevillea Hybrid	Poor	Semi mature	DAWSON STREET	Oct 9, 2020

TR14116	Vacant	Vacant	Vacant	DAWSON STREET	Oct 9, 2020
TR14118	Vacant	Vacant	Vacant	DAWSON STREET	Oct 9, 2020
TR14120	Grevillea Hybrid	Fair	Semi mature	DAWSON STREET	Oct 9, 2020
TR14122	Vacant	Vacant	Vacant	DAWSON STREET	Oct 9, 2020
TR14124	Vacant	Vacant	Vacant	DAWSON STREET	Oct 9, 2020
TR14127	Grevillea Hybrid	Good	Mature	DAWSON STREET	Oct 9, 2020
TR14128	Vacant	Vacant	Vacant	DAWSON STREET	Oct 9, 2020
TR13900	Ligustrum lucidum	Fair	Mature	DIMORA AVENUE	Oct 9, 2020
TR13906	Acer negundo	Fair	Mature	DIMORA AVENUE	Oct 9, 2020
TR13908	Ligustrum lucidum	Fair	Mature	DIMORA AVENUE	Oct 9, 2020
TR13911	Syzygium australe	Fair	Semi mature	DIMORA AVENUE	Oct 9, 2020
TR13884	Eucalyptus camaldulensis	Fair	Mature	DIMORA AVENUE	Oct 9, 2020
TR13885	Syzygium australe	Fair	Mature	DIMORA AVENUE	Oct 9, 2020
TR13481	Prunus cerasifera 'Nigra'	Good	Mature	DODDS STREET	Oct 9, 2020
TR13483	Vacant	Vacant	Vacant	DODDS STREET	Oct 9, 2020
TR13490	Prunus cerasifera 'Nigra'	Poor	Mature	DODDS STREET	Oct 9, 2020
TR13512	Callistemon salignus	Good	Semi mature	DOWLING STREET	Oct 9, 2020
TR13513	Callistemon salignus	Fair	Semi mature	DOWLING STREET	Oct 9, 2020
TR13516	Callistemon salignus	Fair	Semi mature	DOWLING STREET	Oct 9, 2020
TR13517	Callistemon salignus	Fair	Semi mature	DOWLING STREET	Oct 9, 2020
TR13519	Callistemon salignus	Fair	Semi mature	DOWLING STREET	Oct 9, 2020
TR13717	Lagerstroemia indica	Fair	Semi mature	FENTON STREET	Oct 9, 2020
TR19492	Lagerstroemia indica	Fair	Young	FENTON STREET	Oct 9, 2020
TR19493	Lagerstroemia indica	Fair	Young	FENTON STREET	Oct 9, 2020
TR14844	Vacant	Vacant	Vacant	FERGUSSON STREET	Oct 9, 2020
TR14854	Photinia glabra	Fair	Mature	FERGUSSON STREET	Oct 9, 2020
TR14925	Vacant	Vacant	Vacant	FERGUSSON STREET	Oct 9, 2020
TR15225	Malus domestica	Fair	Mature	FERGUSSON STREET	Oct 9, 2020
TR15227	Acacia mearnsii	Fair	Mature	FERGUSSON STREET	Oct 9, 2020
TR15228	Melaleuca nesophila	Good	Mature	FERGUSSON STREET	Oct 9, 2020
TR15229	Acacia mearnsii	Fair	Mature	FERGUSSON STREET	Oct 9, 2020

TR14823	Malus floribunda	Poor	Mature	FERGUSSON STREET	Oct 9, 2020
TR14871	Malus domestica	Good	Mature	FERGUSSON STREET	Oct 9, 2020
TR14872	Lagunaria patersonia	Fair	Mature	FERGUSSON STREET	Oct 9, 2020
TR14874	Betula pendula	Fair	Semi mature	FERGUSSON STREET	Oct 9, 2020
TR14875	Betula pendula	Good	Semi mature	FERGUSSON STREET	Oct 9, 2020
TR14876	Betula pendula	Good	Semi mature	FERGUSSON STREET	Oct 9, 2020
TR14878	Fraxinus angustifolia 'Raywood'	Fair	Mature	FERGUSSON STREET	Oct 9, 2020
TR15344	Vacant	Vacant	Vacant	FERGUSSON STREET	Oct 9, 2020
TR15347	Corymbia ficifolia	Good	Mature	FERGUSSON STREET	Oct 9, 2020
TR15337	Malus floribunda	Poor	Mature	FERGUSSON STREET	Oct 9, 2020
TR15338	Malus floribunda	Poor	Mature	FERGUSSON STREET	Oct 9, 2020
TR15339	Malus domestica	Fair	Mature	FERGUSSON STREET	Oct 9, 2020
TR15340	Malus floribunda	Poor	Mature	FERGUSSON STREET	Oct 9, 2020
TR15341	Stump	Stump	Stump	FERGUSSON STREET	Oct 9, 2020
TR05277	Prunus cerasifera 'Nigra'	Fair	Mature	FERGUSSON STREET	Oct 9, 2020
TR05241	Eucalyptus sideroxylon	Fair	Semi mature	FERGUSSON STREET	Oct 9, 2020
TR05242	Eucalyptus mannifera	Fair	Semi mature	FERGUSSON STREET	Oct 9, 2020
TR05246	Prunus elvins	Fair	Mature	FERGUSSON STREET	Oct 9, 2020
TR05247	Prunus elvins	Good	Mature	FERGUSSON STREET	Oct 9, 2020
TR15244	Ulmus procera	Fair	Semi mature	FERGUSSON STREET	Oct 9, 2020
TR15245	Ulmus procera	Fair	Semi mature	FERGUSSON STREET	Oct 9, 2020

TR15246	Ulmus procera	Good	Semi mature	FERGUSSON STREET	Oct 9, 2020
TR15247	Ulmus procera	Good	Semi mature	FERGUSSON STREET	Oct 9, 2020
TR05248	Prunus cerasifera 'Nigra'	Fair	Mature	FERGUSSON STREET	Oct 9, 2020
TR14295	Photinia glabra	Good	Mature	GNOTUK ROAD	Oct 9, 2020
TR14297	Photinia glabra	Fair	Mature	GNOTUK ROAD	Oct 9, 2020
TR14885	Vacant	Vacant	Vacant	HAMILTON STREET	Oct 9, 2020
TR14855	Photinia glabra	Fair	Mature	HARRISON STREET	Oct 9, 2020
TR14852	Alnus acuminata	Fair	Mature	HARRISON STREET	Oct 9, 2020
TR14867	Callistemon viminalis	Good	Mature	HARRISON STREET	Oct 9, 2020
TR14869	Malus domestica	Fair	Mature	HARRISON STREET	Oct 9, 2020
TR04084	Corymbia ficifolia	Good	Mature	HOLDEN STREET	Oct 9, 2020
TR04219	Corymbia ficifolia	Good	Mature	HOLDEN STREET	Oct 9, 2020
TR14086	Melaleuca styphelioides	Good	Mature	HOPETOUN STREET	Oct 9, 2020
TR14087	Melaleuca styphelioides	Good	Mature	HOPETOUN STREET	Oct 9, 2020
TR14089	Melaleuca styphelioides	Good	Mature	HOPETOUN STREET	Oct 9, 2020
TR14090	Stump	Stump	Stump	HOPETOUN STREET	Oct 9, 2020
TR14094	Photinia glabra	Good	Mature	HOPETOUN STREET	Oct 9, 2020
TR14096	Metrosideros excelsa 'Variegata'	Poor	Mature	HOPETOUN STREET	Oct 9, 2020
TR14097	Pittosporum undulatum	Good	Mature	HOPETOUN STREET	Oct 9, 2020
TR14098	Melaleuca styphelioides	Good	Mature	HOPETOUN STREET	Oct 9, 2020
TR14099	Melaleuca styphelioides	Good	Mature	HOPETOUN STREET	Oct 9, 2020
TR14100	Melaleuca styphelioides	Good	Mature	HOPETOUN STREET	Oct 9, 2020
TR04737	Ilex aquifolium	Good	Mature	KAWANA COURT	Oct 9, 2020
TR13356	Fraxinus angustifolia subsp. Oxycarpa	Fair	Mature	LAWRENCE STREET	Oct 9, 2020
TR13357	Vacant	Vacant	Vacant	LAWRENCE STREET	Oct 9, 2020
TR13358	Fraxinus angustifolia subsp. Oxycarpa	Fair	Mature	LAWRENCE STREET	Oct 9, 2020
TR13359	Fraxinus angustifolia subsp. Oxycarpa	Good	Mature	LAWRENCE STREET	Oct 9, 2020
TR04347	Brachychiton populneus	Good	Mature	LAWRENCE STREET	Oct 9, 2020
TR04348	Brachychiton populneus	Good	Mature	LAWRENCE STREET	Oct 9, 2020
TR04349	Brachychiton populneus	Good	Mature	LAWRENCE STREET	Oct 9, 2020
TR04350	Prunus cerasifera 'Nigra'	Fair	Mature	LAWRENCE STREET	Oct 9, 2020

TR04351	Lagunaria patersonia	Fair	Mature	LAWRENCE STREET	Oct 9, 2020
TR04352	Prunus cerasifera 'Nigra'	Fair	Semi mature	LAWRENCE STREET	Oct 9, 2020
TR04353	Prunus cerasifera 'Nigra'	Fair	Mature	LAWRENCE STREET	Oct 9, 2020
TR04354	Prunus cerasifera 'Nigra'	Good	Semi mature	LAWRENCE STREET	Oct 9, 2020
TR04355	Prunus cerasifera 'Nigra'	Fair	Mature	LAWRENCE STREET	Oct 9, 2020
TR04359	Malus domestica	Fair	Mature	LAWRENCE STREET	Oct 9, 2020
TR04360	Prunus serrulata	Good	Semi mature	LAWRENCE STREET	Oct 9, 2020
TR04361	Prunus serrulata	Good	Semi mature	LAWRENCE STREET	Oct 9, 2020
TR04362	Corymbia ficifolia	Good	Mature	LAWRENCE STREET	Oct 9, 2020
TR04365	Alnus acuminata	Poor	Mature	LAWRENCE STREET	Oct 9, 2020
TR13029	Lagerstroemia indica	Fair	Semi mature	LEURA STREET	Oct 9, 2020
TR13031	Lagerstroemia indica	Fair	Semi mature	LEURA STREET	Oct 9, 2020
	Fraxinus angustifolia				Oct 9, 2020
TR13120	'Raywood'	Good	Mature	LEURA STREET	
	Fraxinus angustifolia subsp.				Oct 9, 2020
TR13168	Oxycarpa	Good	Mature	LEURA STREET	
	Fraxinus angustifolia subsp.				Oct 9, 2020
TR13169	Oxycarpa	Good	Mature	LEURA STREET	
	Fraxinus angustifolia				Oct 9, 2020
TR13193	'Raywood'	Good	Mature	LEURA STREET	
	Fraxinus angustifolia subsp.				Oct 9, 2020
TR13353	Oxycarpa	Good	Mature	LEURA STREET	
	Fraxinus angustifolia subsp.				Oct 9, 2020
TR13354	Oxycarpa	Good	Mature	LEURA STREET	
TR13355	Prunus cerasifera 'Nigra'	Fair	Mature	LEURA STREET	Oct 9, 2020
TR03913	Ulmus procera	Fair	Mature	LEURA STREET	Oct 9, 2020
TR03891	Ulmus procera	Fair	Mature	LEURA STREET	Oct 9, 2020
TR03874	Ulmus procera	Poor	Mature	LEURA STREET	Oct 9, 2020
TR03875	Ulmus procera	Good	Mature	LEURA STREET	Oct 9, 2020
TR03961	Ulmus procera	Good	Mature	LEURA STREET	Oct 9, 2020
TR04345	Prunus serrulata	Fair	Mature	LEURA STREET	Oct 9, 2020
TR04346	Prunus Xblireana	Good	Mature	LEURA STREET	Oct 9, 2020
TR04554	Prunus serrulata	Fair	Mature	LEURA STREET	Oct 9, 2020
				LONGMORE	Oct 9, 2020
TR15147	Prunus persica	Fair	Mature	STREET	
				LONGMORE	Oct 9, 2020
TR15148	Euonymus japonicus	Fair	Mature	STREET	
				LONGMORE	Oct 9, 2020
TR15150	Euonymus japonicus	Fair	Mature	STREET	

TR15152	Euonymus japonicus	Good	Mature	LONGMORE STREET	Oct 9, 2020
TR15153	Malus floribunda	Fair	Semi mature	LONGMORE STREET	Oct 9, 2020
TR15154	Prunus persica	Fair	Mature	LONGMORE STREET	Oct 9, 2020
TR15155	Euonymus japonicus	Good	Mature	LONGMORE STREET	Oct 9, 2020
TR15156	Euonymus japonicus	Good	Mature	LONGMORE STREET	Oct 9, 2020
TR15158	Ligustrum lucidum	Good	Mature	LONGMORE STREET	Oct 9, 2020
TR15159	Euonymus japonicus	Good	Mature	LONGMORE STREET	Oct 9, 2020
TR15187	Prunus elvins	Fair	Mature	LONGMORE STREET	Oct 9, 2020
TR13273	Stump	Stump	Stump	LOVETT STREET	Oct 9, 2020
TR13679	Populus Xcanadensis	Fair	Mature	MANIFOLD STREET	Oct 9, 2020
TR13668	Quercus robur	Fair	Mature	MANIFOLD STREET	Oct 9, 2020
TR14217	Prunus serrulata	Fair	Semi mature	MANIFOLD STREET	Oct 9, 2020
TR19549	Tilia xeuropaea	Good	Semi mature	MANIFOLD STREET	Oct 9, 2020
TR19550	Tilia xeuropaea	Good	Semi mature	MANIFOLD STREET	Oct 9, 2020
TR14857	Pittosporum 'Garnettii'	Good	Young	MANIFOLD STREET	Oct 9, 2020
TR15299	Ulmus procera	Fair	Mature	MANIFOLD STREET	Oct 9, 2020
TR15302	Ulmus procera	Poor	Mature	MANIFOLD STREET	Oct 9, 2020
TR03998	Ulmus procera	Fair	Mature	MANIFOLD STREET	Oct 9, 2020
TR04030	Melaleuca armillaris	Good	Mature	MANIFOLD STREET	Oct 9, 2020
TR04031	Melaleuca linariifolia	Good	Mature	MANIFOLD STREET	Oct 9, 2020
TR04034	Prunus serrulata	Good	Mature	MANIFOLD STREET	Oct 9, 2020
TR04037	Prunus serrulata	Fair	Mature	MANIFOLD STREET	Oct 9, 2020
TR04040	Prunus serrulata	Fair	Mature	MANIFOLD STREET	Oct 9, 2020
TR04042	Prunus serrulata	Good	Mature	MANIFOLD STREET	Oct 9, 2020
TR04043	Prunus serrulata	Good	Semi mature	MANIFOLD STREET	Oct 9, 2020
TR04044	Prunus serrulata	Good	Semi mature	MANIFOLD STREET	Oct 9, 2020
TR04047	Prunus serrulata	Fair	Mature	MANIFOLD STREET	Oct 9, 2020
TR04004	Prunus serrulata	Good	Mature	MANIFOLD STREET	Oct 9, 2020
TR04007	Prunus serrulata	Good	Mature	MANIFOLD STREET	Oct 9, 2020
TR04011	Prunus serrulata	Fair	Mature	MANIFOLD STREET	Oct 9, 2020
TR04012	Prunus serrulata	Good	Mature	MANIFOLD STREET	Oct 9, 2020

TR04013	Vacant	Vacant	Vacant	MANIFOLD STREET	Oct 9, 2020
TR04014	Prunus serrulata	Fair	Mature	MANIFOLD STREET	Oct 9, 2020
TR04016	Prunus serrulata	Good	Mature	MANIFOLD STREET	Oct 9, 2020
TR04017	Prunus serrulata	Fair	Mature	MANIFOLD STREET	Oct 9, 2020
TR04018	Prunus serrulata	Good	Semi mature	MANIFOLD STREET	Oct 9, 2020
TR04019	Prunus serrulata	Fair	Mature	MANIFOLD STREET	Oct 9, 2020
TR04020	Prunus serrulata	Fair	Mature	MANIFOLD STREET	Oct 9, 2020
TR19576	Acacia decurrens	Fair	Mature	MANIFOLD STREET	Oct 9, 2020
TR19590	Vacant	Vacant	Vacant	MANIFOLD STREET	Oct 9, 2020
TR04582	Quercus robur	Good	Mature	MANIFOLD STREET	Oct 9, 2020
TR04583	Quercus robur	Good	Mature	MANIFOLD STREET	Oct 9, 2020
TR04584	Quercus robur	Good	Mature	MANIFOLD STREET	Oct 9, 2020
TR15688	Ulmus procera	Fair	Mature	MANIFOLD STREET	Oct 9, 2020
TR15689	Ulmus procera	Fair	Mature	MANIFOLD STREET	Oct 9, 2020
TR15690	Ulmus procera	Fair	Mature	MANIFOLD STREET	Oct 9, 2020
TR15691	Ulmus procera	Fair	Mature	MANIFOLD STREET	Oct 9, 2020
TR15692	Ulmus procera	Good	Semi mature	MANIFOLD STREET	Oct 9, 2020
TR15693	Ulmus procera	Fair	Mature	MANIFOLD STREET	Oct 9, 2020
TR15473	Stump	Stump	Stump	MANIFOLD STREET	Oct 9, 2020
TR15474	Stump	Stump	Stump	MANIFOLD STREET	Oct 9, 2020
TR15475	Stump	Stump	Stump	MANIFOLD STREET	Oct 9, 2020
TR15483	Callistemon citrinus	Good	Semi mature	MANIFOLD STREET	Oct 9, 2020
TR19539	Callistemon salignus	Good	Young	MANIFOLD STREET	Oct 9, 2020
TR19540	Casuarina cunninghamiana	Poor	Semi mature	MANIFOLD STREET	Oct 9, 2020
TR05229	Laburnum anagyroides	Fair	Mature	MANIFOLD STREET	Oct 9, 2020
TR05230	Corymbia ficifolia	Fair	Mature	MANIFOLD STREET	Oct 9, 2020
TR05231	Malus domestica	Fair	Mature	MANIFOLD STREET	Oct 9, 2020
TR05232	Vacant	Vacant	Vacant	MANIFOLD STREET	Oct 9, 2020
TR05270	Prunus cerasifera 'Nigra'	Fair	Mature	MANIFOLD STREET	Oct 9, 2020
TR14306	Prunus cerasifera 'Nigra'	Good	Mature	MCALPINE COURT	Oct 9, 2020
TR14307	Prunus cerasifera 'Nigra'	Good	Mature	MCALPINE COURT	Oct 9, 2020
TR14308	Prunus cerasifera 'Nigra'	Good	Mature	MCALPINE COURT	Oct 9, 2020
TR14311	Prunus cerasifera 'Nigra'	Good	Mature	MCALPINE COURT	Oct 9, 2020
TR14312	Stump	Stump	Stump	MCALPINE COURT	Oct 9, 2020
TR14316	Vacant	Vacant	Vacant	MCALPINE COURT	Oct 9, 2020
TR14327	Prunus cerasifera 'Nigra'	Good	Mature	MCALPINE COURT	Oct 9, 2020

TR13613	Prunus cerasifera 'Nigra'	Fair	Mature	MCARTHUR STREET	Oct 9, 2020
TR13566	Prunus serrulata	Good	Semi mature	MCARTHUR STREET	Oct 9, 2020
TR13464	Prunus Xblireana	Good	Mature	MCKINNON STREET	Oct 9, 2020
TR13468	Prunus serrulata	Good	Semi mature	MCKINNON STREET	Oct 9, 2020
TR13469	Prunus cerasifera 'Nigra'	Good	Mature	MCKINNON STREET	Oct 9, 2020
TR13470	Prunus cerasifera	Fair	Mature	MCKINNON STREET	Oct 9, 2020
TR13472	Prunus cerasifera 'Nigra'	Fair	Mature	MCKINNON STREET	Oct 9, 2020
TR13473	Prunus serrulata	Fair	Mature	MCKINNON STREET	Oct 9, 2020
TR13038	Lagerstroemia indica	Fair	Semi mature	MCNICOL STREET	Oct 9, 2020
TR13039	Lagerstroemia indica	Fair	Semi mature	MCNICOL STREET	Oct 9, 2020
TR13040	Lagerstroemia indica	Fair	Semi mature	MCNICOL STREET	Oct 9, 2020
TR13110	Malus Xpurpurea	Fair	Mature	MCNICOL STREET	Oct 9, 2020
TR13111	Corymbia ficifolia	Good	Mature	MCNICOL STREET	Oct 9, 2020
TR13112	Lagunaria patersonia	Good	Mature	MCNICOL STREET	Oct 9, 2020
TR12953	Tilia cordata	Good	Semi mature	MCNICOL STREET	Oct 9, 2020
TR12954	Tilia cordata	Good	Semi mature	MCNICOL STREET	Oct 9, 2020
TR12955	Tilia cordata	Good	Semi mature	MCNICOL STREET	Oct 9, 2020
TR12960	Tilia cordata	Good	Semi mature	MCNICOL STREET	Oct 9, 2020
TR12961	Tilia cordata	Good	Semi mature	MCNICOL STREET	Oct 9, 2020
TR12962	Tilia cordata	Good	Semi mature	MCNICOL STREET	Oct 9, 2020
TR12963	Tilia cordata	Good	Semi mature	MCNICOL STREET	Oct 9, 2020
TR12964	Tilia cordata	Good	Semi mature	MCNICOL STREET	Oct 9, 2020
TR12965	Tilia cordata	Good	Semi mature	MCNICOL STREET	Oct 9, 2020
TR12966	Tilia cordata	Good	Semi mature	MCNICOL STREET	Oct 9, 2020
TR12967	Tilia cordata	Good	Semi mature	MCNICOL STREET	Oct 9, 2020
TR12968	Tilia cordata	Good	Semi mature	MCNICOL STREET	Oct 9, 2020
TR12970	Tilia cordata	Good	Semi mature	MCNICOL STREET	Oct 9, 2020
TR13157	Brachychiton populneus	Good	Mature	MCNICOL STREET	Oct 9, 2020
TR13158	Brachychiton populneus	Good	Mature	MCNICOL STREET	Oct 9, 2020
TR14664	Fraxinus angustifolia	Fair	Mature	MEIKLEJOHN STREET	Oct 9, 2020
TR04679	Prunus cerasifera 'Nigra'	Good	Semi mature	MORRIS STREET	Oct 9, 2020
TR15177	Vacant	Vacant	Vacant	OWER STREET	Oct 9, 2020
TR15178	Malus floribunda	Fair	Mature	OWER STREET	Oct 9, 2020
TR15179	Prunus cerasifera 'Nigra'	Fair	Semi mature	OWER STREET	Oct 9, 2020
TR15180	Vacant	Vacant	Vacant	OWER STREET	Oct 9, 2020
TR15181	Malus domestica	Fair	Mature	OWER STREET	Oct 9, 2020

TR15188	Prunus elvins	Fair	Mature	OWER STREET	Oct 9, 2020
TR05176	Syringa vulgaris	Fair	Mature	OWER STREET	Oct 9, 2020
TR05179	Ligustrum lucidum	Fair	Mature	OWER STREET	Oct 9, 2020
TR15253	Metrosideros excelsa	Fair	Mature	OWER STREET	Oct 9, 2020
TR14470	Betula pendula	Fair	Semi mature	PARK LANE	Oct 9, 2020
TR14472	Robinia pseudoacacia	Fair	Mature	PARK LANE	Oct 9, 2020
TR14483	Vacant	Vacant	Vacant	PARK LANE	Oct 9, 2020
TR14785	Euonymus japonicus	Fair	Mature	PATON STREET	Oct 9, 2020
TR14966	Quercus robur	Fair	Mature	PIKE STREET	Oct 9, 2020
TR14967	Stump	Stump	Stump	PIKE STREET	Oct 9, 2020
TR13808	Callistemon viminalis	Good	Mature	ROBINSON STREET	Oct 9, 2020
TR13809	Callistemon pallidus	Fair	Mature	ROBINSON STREET	Oct 9, 2020
TR13810	Callistemon pallidus	Fair	Mature	ROBINSON STREET	Oct 9, 2020
TR13854	Fortunella japonica	Good	Mature	ROBINSON STREET	Oct 9, 2020
TR13855	Fortunella japonica	Fair	Mature	ROBINSON STREET	Oct 9, 2020
TR13856	Fortunella japonica	Fair	Mature	ROBINSON STREET	Oct 9, 2020
TR13857	Fortunella japonica	Fair	Mature	ROBINSON STREET	Oct 9, 2020
TR13859	Callistemon viminalis	Fair	Mature	ROBINSON STREET	Oct 9, 2020
TR13860	Pyrus calleryana	Good	Mature	ROBINSON STREET	Oct 9, 2020
TR13861	Pyrus calleryana	Good	Mature	ROBINSON STREET	Oct 9, 2020
TR13862	Fraxinus angustifolia 'Raywood'	Fair	Mature	ROBINSON STREET	Oct 9, 2020
TR13863	Fraxinus angustifolia 'Raywood'	Good	Mature	ROBINSON STREET	Oct 9, 2020
TR13864	Prunus serrulata	Fair	Mature	ROBINSON STREET	Oct 9, 2020
TR13865	Prunus serrulata	Fair	Semi mature	ROBINSON STREET	Oct 9, 2020
TR13866	Prunus serrulata	Fair	Mature	ROBINSON STREET	Oct 9, 2020
TR13867	Prunus serrulata	Fair	Mature	ROBINSON STREET	Oct 9, 2020
TR13868	Prunus serrulata	Fair	Mature	ROBINSON STREET	Oct 9, 2020
TR13869	Prunus serrulata	Fair	Mature	ROBINSON STREET	Oct 9, 2020
TR13989	Pittosporum tenuifolium	Good	Mature	RUSSELL STREET	Oct 9, 2020
TR13991	Pittosporum tenuifolium	Good	Mature	RUSSELL STREET	Oct 9, 2020
TR13992	Pittosporum tenuifolium	Good	Mature	RUSSELL STREET	Oct 9, 2020
TR13993	Pittosporum tenuifolium	Good	Mature	RUSSELL STREET	Oct 9, 2020
TR13995	Pittosporum tenuifolium	Good	Mature	RUSSELL STREET	Oct 9, 2020
TR13996	Pittosporum tenuifolium	Good	Mature	RUSSELL STREET	Oct 9, 2020
TR13997	Pittosporum tenuifolium	Good	Mature	RUSSELL STREET	Oct 9, 2020

TR13998	<i>Pittosporum tenuifolium</i>	Good	Mature	RUSSELL STREET	Oct 9, 2020
TR13999	<i>Pittosporum tenuifolium</i>	Good	Mature	RUSSELL STREET	Oct 9, 2020
TR14003	<i>Pittosporum tenuifolium</i>	Good	Mature	RUSSELL STREET	Oct 9, 2020
TR14004	<i>Pittosporum tenuifolium</i>	Good	Mature	RUSSELL STREET	Oct 9, 2020
TR14005	<i>Pittosporum tenuifolium</i>	Good	Mature	RUSSELL STREET	Oct 9, 2020
TR14007	<i>Pittosporum tenuifolium</i>	Fair	Mature	RUSSELL STREET	Oct 9, 2020
TR14008	<i>Pittosporum tenuifolium</i>	Good	Mature	RUSSELL STREET	Oct 9, 2020
TR14009	<i>Pittosporum tenuifolium</i>	Good	Semi mature	RUSSELL STREET	Oct 9, 2020
TR13054	<i>Quercus robur</i>	Good	Mature	SCOTT STREET	Oct 9, 2020
TR13055	<i>Quercus robur</i>	Fair	Mature	SCOTT STREET	Oct 9, 2020
TR13033	<i>Lagerstroemia indica</i>	Fair	Semi mature	SCOTT STREET	Oct 9, 2020
TR13034	<i>Lagerstroemia indica</i>	Fair	Semi mature	SCOTT STREET	Oct 9, 2020
TR13035	<i>Lagerstroemia indica</i>	Fair	Semi mature	SCOTT STREET	Oct 9, 2020
TR13036	Vacant	Vacant	Vacant	SCOTT STREET	Oct 9, 2020
TR13037	Vacant	Vacant	Vacant	SCOTT STREET	Oct 9, 2020
TR13045	<i>Lagerstroemia indica</i>	Poor	Semi mature	SCOTT STREET	Oct 9, 2020
TR13046	<i>Lagerstroemia indica</i>	Fair	Semi mature	SCOTT STREET	Oct 9, 2020
TR13047	<i>Lagerstroemia indica</i>	Fair	Semi mature	SCOTT STREET	Oct 9, 2020
TR13048	<i>Lagerstroemia indica</i>	Fair	Semi mature	SCOTT STREET	Oct 9, 2020
TR13032	<i>Lagerstroemia indica</i>	Fair	Semi mature	SCOTT STREET	Oct 9, 2020
TR13049	<i>Lagerstroemia indica</i>	Fair	Semi mature	SCOTT STREET	Oct 9, 2020
TR13050	<i>Lagerstroemia indica</i>	Fair	Semi mature	SCOTT STREET	Oct 9, 2020
TR13052	<i>Lagerstroemia indica</i>	Fair	Semi mature	SCOTT STREET	Oct 9, 2020
TR04572	<i>Quercus robur</i>	Fair	Mature	SCOTT STREET	Oct 9, 2020
TR04661	<i>Prunus serrulata</i>	Good	Mature	SCOTT STREET	Oct 9, 2020
TR04663	<i>Prunus serrulata</i>	Good	Mature	SCOTT STREET	Oct 9, 2020
	<i>Fraxinus angustifolia</i> subsp.				Oct 9, 2020
TR14252	<i>Oxycarpa</i>	Fair	Mature	SCOTT STREET	
	<i>Fraxinus angustifolia</i> subsp.				Oct 9, 2020
TR14254	<i>Oxycarpa</i>	Fair	Mature	SCOTT STREET	
	<i>Fraxinus angustifolia</i> subsp.				Oct 9, 2020
TR14275	<i>Oxycarpa</i>	Fair	Mature	SCOTT STREET	
	<i>Fraxinus angustifolia</i>				Oct 9, 2020
TR04709	'Raywood'	Fair	Mature	SCOTT STREET	
	<i>Fraxinus angustifolia</i> subsp.				Oct 9, 2020
TR04710	<i>Oxycarpa</i>	Fair	Mature	SCOTT STREET	
	<i>Fraxinus angustifolia</i> subsp.				Oct 9, 2020
TR04711	<i>Oxycarpa</i>	Fair	Mature	SCOTT STREET	

TR04692	Fraxinus angustifolia subsp. Oxycarpa	Fair	Mature	SCOTT STREET	Oct 9, 2020
TR04694	Fraxinus angustifolia subsp. Oxycarpa	Fair	Mature	SCOTT STREET	Oct 9, 2020
TR04695	Fraxinus angustifolia subsp. Oxycarpa	Fair	Mature	SCOTT STREET	Oct 9, 2020
TR04696	Fraxinus angustifolia subsp. Oxycarpa	Fair	Mature	SCOTT STREET	Oct 9, 2020
TR04697	Fraxinus angustifolia subsp. Oxycarpa	Fair	Mature	SCOTT STREET	Oct 9, 2020
TR04699	Malus Xpurpurea Fraxinus angustifolia subsp.	Good	Mature	SCOTT STREET	Oct 9, 2020
TR04700	Oxycarpa Fraxinus angustifolia subsp.	Good	Mature	SCOTT STREET	Oct 9, 2020
TR04701	Oxycarpa Fraxinus angustifolia subsp.	Fair	Mature	SCOTT STREET	Oct 9, 2020
TR04704	Oxycarpa Fraxinus angustifolia subsp.	Good	Mature	SCOTT STREET	Oct 9, 2020
TR04705	Oxycarpa Fraxinus angustifolia subsp.	Poor	Mature	SCOTT STREET	Oct 9, 2020
TR04706	Oxycarpa Fraxinus angustifolia subsp.	Fair	Mature	SCOTT STREET	Oct 9, 2020
TR04707	Oxycarpa Fraxinus angustifolia subsp.	Fair	Mature	SCOTT STREET	Oct 9, 2020
TR04708	Oxycarpa	Fair	Mature	SCOTT STREET	Oct 9, 2020
TR13541	Vacant	Vacant	Vacant	SHAW STREET	Oct 9, 2020
TR13546	Prunus serrulata	Fair	Semi mature	SHAW STREET	Oct 9, 2020
TR14613	Stump	Stump	Stump	SINNOTT CRESCENT	Oct 9, 2020
TR14615	Callistemon viminalis	Fair	Mature	SINNOTT CRESCENT	Oct 9, 2020
TR15206	Pyrus calleryana	Good	Semi mature	TAIT STREET	Oct 9, 2020
TR05191	Prunus dulcis	Fair	Mature	TAIT STREET	Oct 9, 2020
TR05251	Prunus cerasifera 'Nigra'	Fair	Mature	TAIT STREET	Oct 9, 2020
TR05252	Prunus cerasifera 'Nigra'	Fair	Mature	TAIT STREET	Oct 9, 2020
TR05253	Prunus cerasifera 'Nigra'	Fair	Mature	TAIT STREET	Oct 9, 2020
TR04152	Quercus palustris	Good	Mature	TALBOT STREET	Oct 9, 2020
TR14689	Melaleuca styphelioides	Fair	Mature	THORNTON STREET	Oct 9, 2020
TR14698	Melaleuca styphelioides	Fair	Mature	THORNTON STREET	Oct 9, 2020
TR14702	Melaleuca styphelioides	Fair	Mature	THORNTON STREET	Oct 9, 2020
TR14703	Melaleuca styphelioides	Fair	Mature	THORNTON STREET	Oct 9, 2020

TR14704	Melaleuca styphelioides	Fair	Mature	THORNTON STREET	Oct 9, 2020
TR13612	Prunus cerasifera 'Nigra'	Good	Mature	WALLS STREET	Oct 9, 2020
TR13437	Ulmus procera	Fair	Mature	WALLS STREET	Oct 9, 2020
TR13438	Ulmus procera	Good	Mature	WALLS STREET	Oct 9, 2020
TR13439	Ulmus procera	Good	Mature	WALLS STREET	Oct 9, 2020
TR13440	Ulmus procera	Fair	Mature	WALLS STREET	Oct 9, 2020
TR13441	Ulmus procera	Good	Mature	WALLS STREET	Oct 9, 2020
TR13442	Ulmus procera	Good	Mature	WALLS STREET	Oct 9, 2020
TR13846	Photinia glabra	Fair	Mature	WALLS STREET	Oct 9, 2020
TR13939	Hakea drupacea	Poor	Mature	WALLS STREET	Oct 9, 2020
TR14010	Pittosporum tenuifolium	Good	Mature	WALLS STREET	Oct 9, 2020
TR13499	Prunus serrulata	Fair	Mature	WALLS STREET	Oct 9, 2020
TR13500	Prunus serrulata	Fair	Mature	WALLS STREET	Oct 9, 2020
TR13501	Prunus serrulata	Fair	Mature	WALLS STREET	Oct 9, 2020
TR13522	Prunus serrulata	Fair	Semi mature	WALLS STREET	Oct 9, 2020
TR13548	Prunus serrulata	Good	Semi mature	WALLS STREET	Oct 9, 2020
TR13567	Prunus serrulata	Good	Mature	WALLS STREET	Oct 9, 2020
TR13568	Prunus serrulata	Good	Mature	WALLS STREET	Oct 9, 2020
TR13694	Prunus serrulata	Good	Mature	WALLS STREET	Oct 9, 2020
TR13614	Prunus cerasifera 'Nigra'	Good	Mature	WARE STREET	Oct 9, 2020
TR13657	Melaleuca styphelioides	Good	Mature	WARE STREET	Oct 9, 2020
TR13659	Acacia floribunda	Fair	Mature	WARE STREET	Oct 9, 2020
TR13676	Populus Xcanadensis	Fair	Mature	WARE STREET	Oct 9, 2020
TR13677	Populus Xcanadensis	Good	Mature	WARE STREET	Oct 9, 2020
TR13678	Populus Xcanadensis	Good	Mature	WARE STREET	Oct 9, 2020
TR13205	Syringa vulgaris	Poor	Mature	WILSON STREET	Oct 9, 2020
TR13207	Syringa vulgaris	Fair	Mature	WILSON STREET	Oct 9, 2020
TR03923	Ulmus procera	Fair	Mature	WILSON STREET	Oct 9, 2020
TR04320	Vacant	Vacant	Vacant	WILSON STREET	Oct 9, 2020
TR04321	Syringa vulgaris	Poor	Mature	WILSON STREET	Oct 9, 2020
TR04716	Liquidambar styraciflua	Fair	Mature	WRIGHT STREET	Oct 9, 2020
TR04717	Liquidambar styraciflua	Fair	Mature	WRIGHT STREET	Oct 9, 2020
TR04718	Liquidambar styraciflua	Good	Mature	WRIGHT STREET	Oct 9, 2020
TR04746	Corymbia ficifolia	Good	Mature	WRIGHT STREET	Oct 9, 2020
TR04753	Vacant	Vacant	Vacant	WRIGHT STREET	Oct 9, 2020
TR13759	Corymbia ficifolia	Fair	Mature	YORK STREET	Oct 9, 2020

TR13762	Vacant	Vacant	Vacant	YORK STREET	Oct 9, 2020
TR13812	Callistemon pallidus	Fair	Mature	YORK STREET	Oct 9, 2020
TR13813	Lagunaria patersonia	Good	Mature	YORK STREET	Oct 9, 2020
TR13814	Stump	Stump	Stump	YORK STREET	Oct 9, 2020
TR13815	Metrosideros excelsa	Fair	Mature	YORK STREET	Oct 9, 2020
TR13817	Callistemon viminalis	Fair	Mature	YORK STREET	Oct 9, 2020

.....
.....

5. Undertake an Audit of 10% of vegetation in the vicinity of electric lines that are the responsibility of council.

Was compliance achieved at all locations (please circle):

Yes No

If No, record non-compliant tree numbers below and undertake further audit of 10% and refer all non-compliant trees to contractor.

Tree Number	Issues

6. Was the pruning undertaken in accordance with AS4373-2007 Pruning of Amenity Trees as a minimum? (please circle)

Yes No

.....
.....

7. Was the identification of important vegetation through Council's internal processes achieved? (please circle)

Yes No

.....
.....

8. Were 3 monthly inspections and maintenance schedules completed? (please circle)

(Attach evidence or document link as required.)

Yes No

.....
.....

Section 2

9. On-site review contractors qualifications and record details below or attach completion certificates.

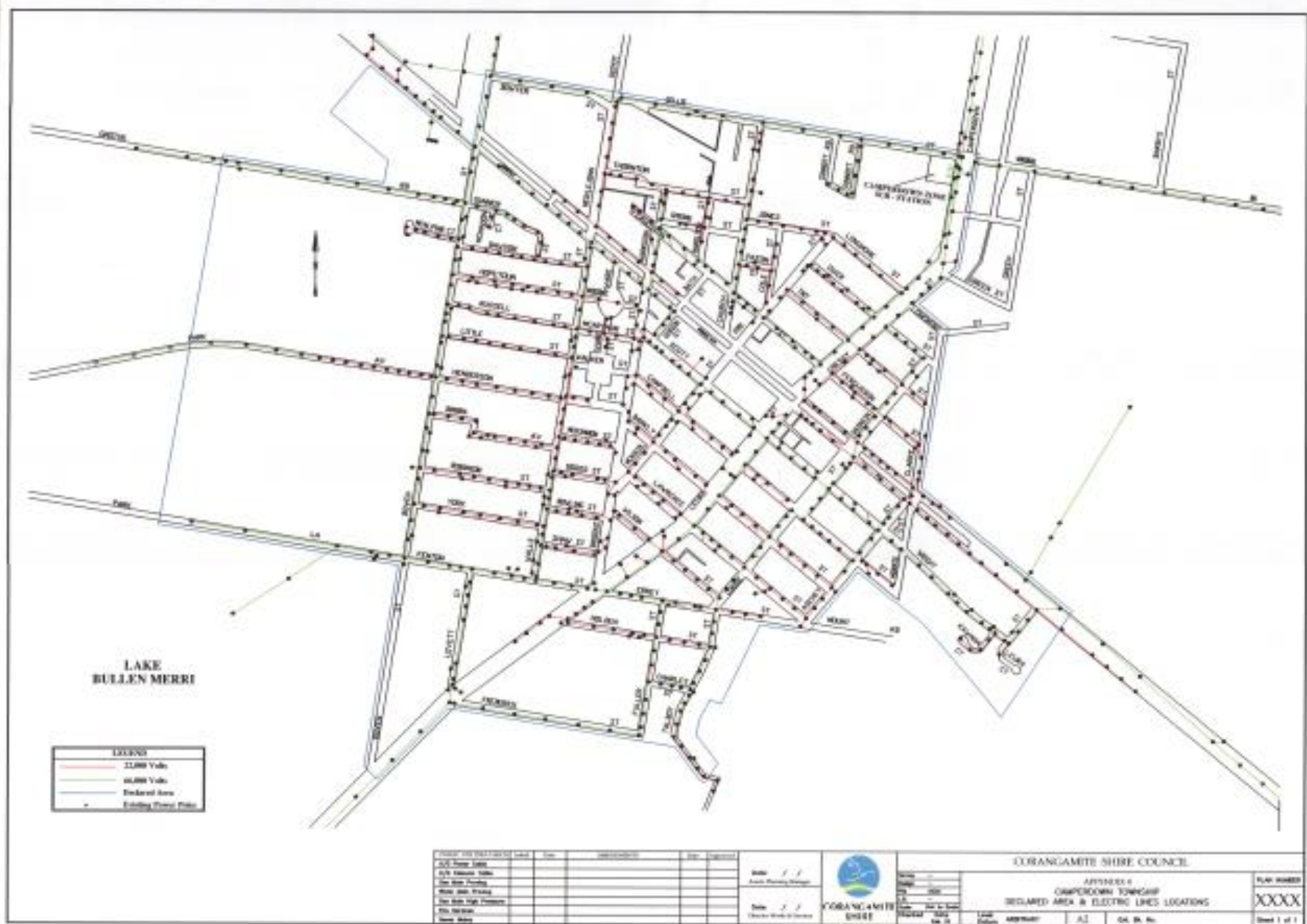
.....
.....
.....
.....
.....

10. Review contractors OH&S procedures on site and traffic management requirements are being implemented.

.....
.....
.....
.....
.....

After undertaking this audit against the KPIs identified in the Electric Line Clearance Management Plan Camperdown please ensure this document is stored in Council's Records Management System for further review.

Appendix 4



Appendix 5

Example Public Notice

PUBLIC NOTICE

Pruning of trees to commence in Camperdown.

Corangamite Shire Council wishes to advise that tree assessments and pruning has been programmed to commence 14 days after the publication of this notice, in Camperdown.

This pruning is to comply with statutory requirements such as clearance from powerlines according to the Electrical Safety (Electric Line Clearance) Regulations 2020. All nature strip and park trees will be assessed and pruned as required according to a works specification.

It is estimated that the works will not take longer than 4 weeks to complete from the commencement date, however if scheduled works are to exceed 60 days Council will publish a second notice with an updated proposed end date.

Further information regarding this program is available by contacting the Manager Asset Planning Corangamite Shire Council on 55 937100.